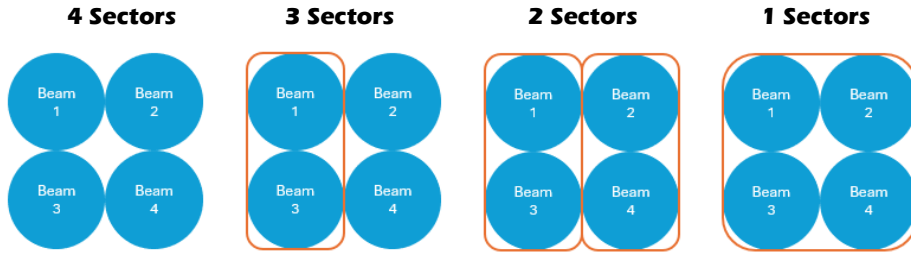
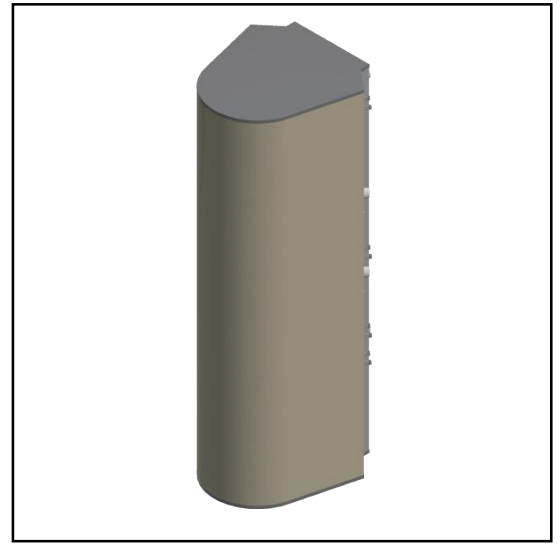


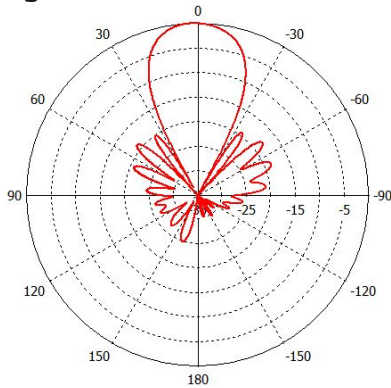
## MS-SQ-4.4-F4-H4

**Lens antenna for stadium applications with 4 beams in square arrangement. Each beam for bands (3300-4200 MHz) and (1695-2690 MHz) with 4x4 MIMO. Beams can be combined to make 1 sector (square), 2 sectors (vertical or horizontal), 3 sectors, or 4 sectors.**

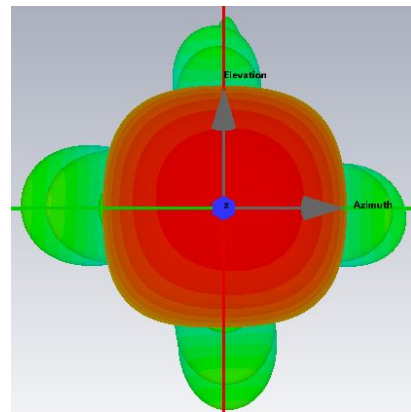


### PATTERN RESULTS:

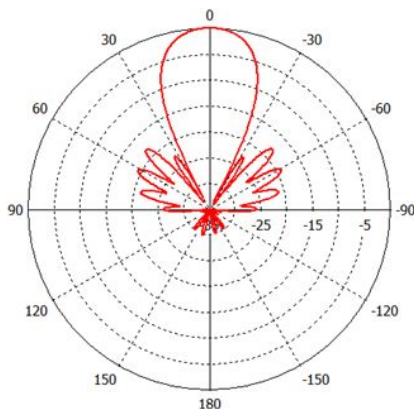
**F-Band Horizontal Pattern (3.8 GHz)  
For Single Beam**



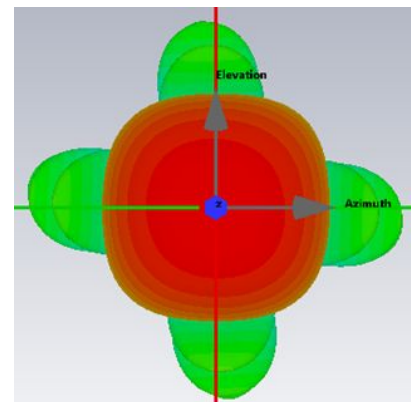
**F-Band 3D pattern (3.8 GHz)  
4 Beams Combined Together**



**H-Band Horizontal Pattern (2.0 GHz)  
For Single Beam**



**H-Band 3D Pattern (2.0 GHz)  
4 Beams Combined Together**



PRELIMINARY

### TECHNICAL SPECIFICATIONS PER BEAM

Frequency	3300-4200 MHz	1695-2690 MHz
Gain	18dBi	18dBi
VSWR	<1.5:1	<1.5:1
Polarization	Dual Slant ±45°	Dual Slant ±45°
All Beams Combined Coverage (10dB)	54°x 54°	55°x55°
Horizontal Beamwidth (3dB)	18°	19°
Horizontal Beamwidth (10dB)	31°	33°
Vertical Beamwidth (3dB)	18°	19°
Vertical Beamwidth (10dB)	31°	33°
Number of Ports per Beam	4	4
First Sidelobe Level	<-18dB	<-18dB
Front to Back Ratio	>28dB	>28dB
Isolation Port to Port - Polarization	>28dB	>28dB
Isolation Port to Port - Beam	>28dB	>28dB
Power Rating	100W per port	100W per port
Intermodulation	<-153dBc	<-153dBc
Impedance	50 ohm	50 ohm
Connector Quantity and Type	16 x 4.3-10 female	16 x 4.3-10 female

### MECHANICAL DATA

Dimensions (H x W x D)	133.4 x 61.9 x 64.1 cm 52.5 x 24.3 x 25.2 inch
Antenna Weight	45.8 kg 100.9 lbs
Radome Material	Fiber Glass
Mounting	Standard pipe mount Compatible pipe diameter: 6.1 – 11.4 cm 2.4 – 4.5 inch

### ENVIRONMENTAL RATINGS

Humidity	95% RH @ +30°C
Temperature	-40°C to +70°C
Wind load @ 150km/h	TBD

### CONNECTOR LAYOUT:

