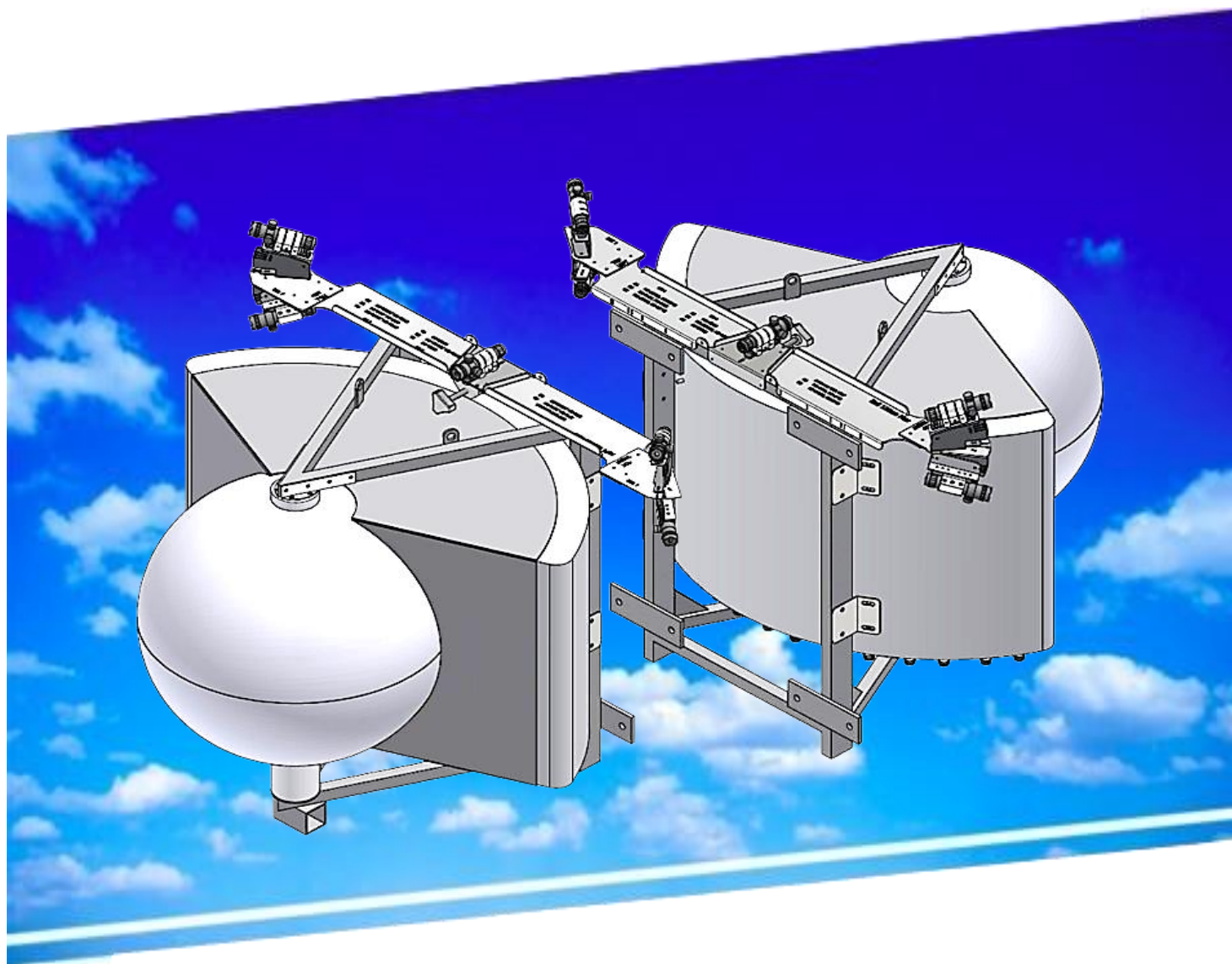




LENS TECHNOLOGY ENABLED

MS-8H60 SLP User Guide

(Stadium Laser Pointer)



Revision History:

<u>Date</u>	<u>Description</u>	<u>Rev By</u>	<u>Check By</u>	<u>Rev no</u>
12-Jun-2025	Initial Release	RL	Pavel	0

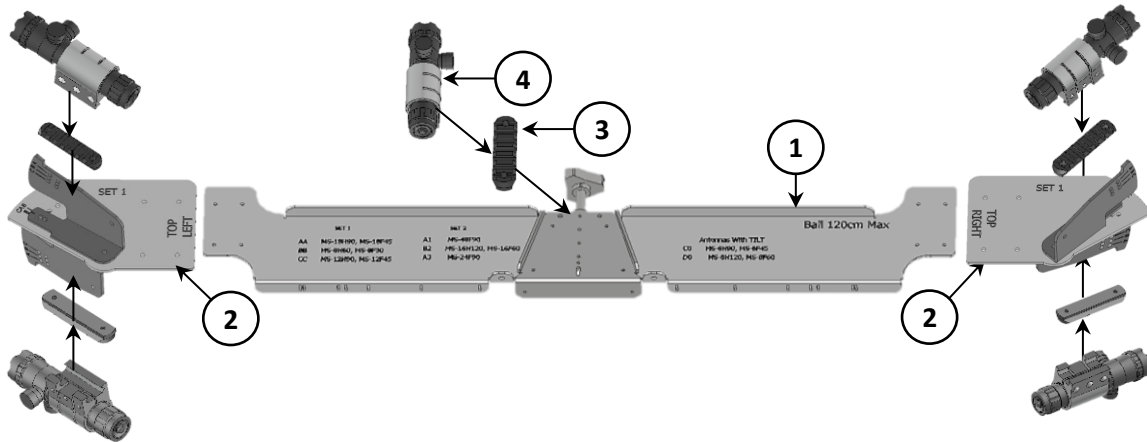
1.00 MS-8H60 SLP: Configuration

1.10 SLP: Parts Selection and Assembly (Example of using **Type 2** main base plate)

1.11 Type 1: Main base plate, Model: **LSA-SLP-1, 120cm** (L=738mm, Engrave with COLOR text)

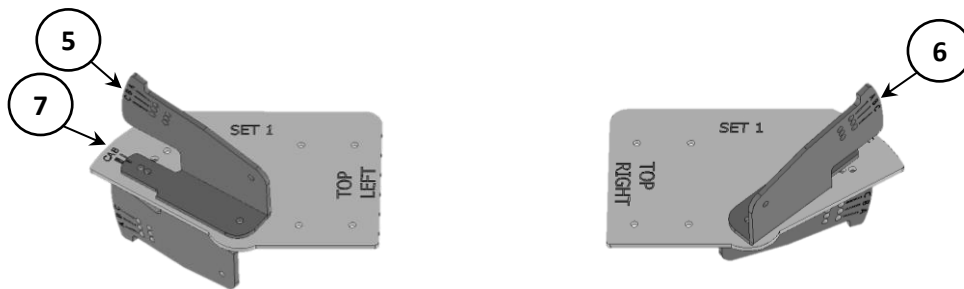
1.12 Type 2: Main base plate, Model: **LSA-SLP-2, "Ball 120cm Max"** (L=838mm, Engrave with WHITE text)

- ① Main base plate: **"Ball 120cm Max"**.
- ② Secure the **"SET 1"** plate onto the **"Ball 120cm Max"** base plate.
- ③ Install all **5 Laser beds** securely.
- ④ Install all **5 Lasers pointers** in place.



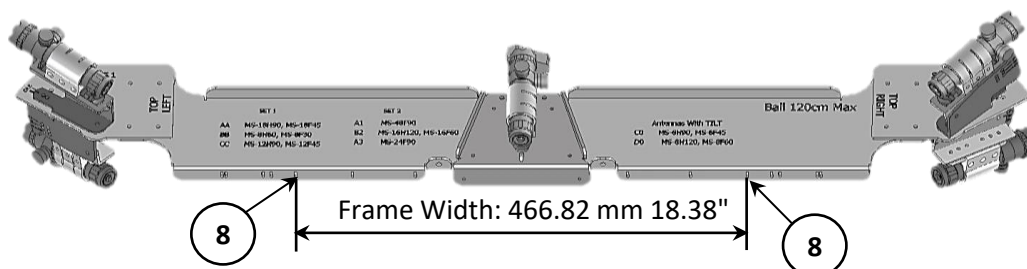
1.20 SLP SET 1 (Left & Right): **Pre-setting**

- ⑤ Adjust to position **"B"** and securely fasten it.
- ⑥ Adjust the top tilting bracket to position **"B"** and securely fasten it.
- ⑦ Adjust the bottom tilting bracket to position **"B"** and securely fasten it.



1.30 SLP Main base plate: **Frame Marking**

- ⑧ Mark the frame width on SLP rear latch as a reference point.



2.00 Laser Pointer: Safety Information and User Guide

⚠ **Never** point this device at reflective surfaces to avoid unintended light dispersion.

⚠ **Use this device** only in accordance with all applicable local and national laser laws and regulations.

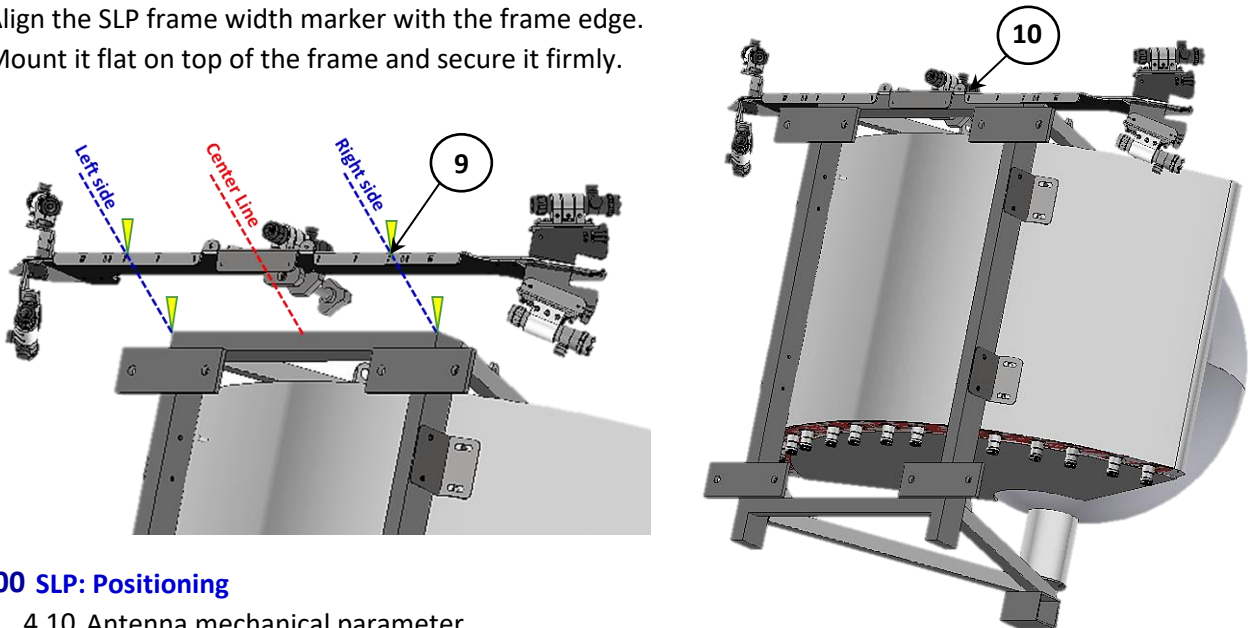
⚠ **Never** aim the laser directly at an aircraft or at the eyes of any person or animal. Avoid viewing the laser through magnified or focused optics.

This product is resistant to standard precipitation. Avoid exposing it to pressurized water or allowing its

⚠ internal electronics to become wet. If moisture exposure occurs, immediately remove the batteries and allow all components to dry completely before resuming use.

3.00 SLP: Lifting and Mounting

- ⚠ Workplace safety and health compliance measures must be followed when performing 'Work-At-Height' tasks.
- ⚠ Only certified personnel should use appropriate equipment, safety harnesses, and tools to perform the task safely.
- ⑨ Align the SLP frame width marker with the frame edge.
- ⑩ Mount it flat on top of the frame and secure it firmly.



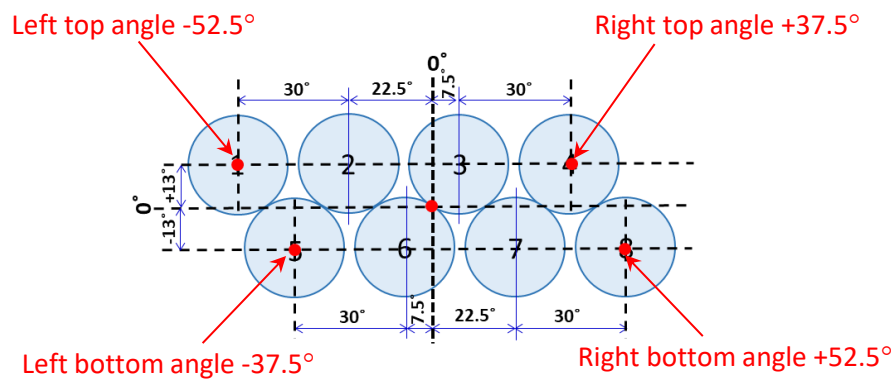
4.00 SLP: Positioning

4.10 Antenna mechanical parameter

MS-8H60

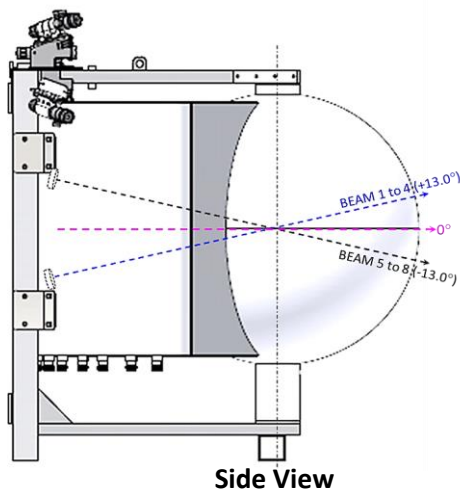
(Frame Width: 466.80mm, 18.38")

Base Plate Setting	Tilt Bkt Setting	Left Top Angle	Right Top Angle	Left Btm Angle	Right Btm Angle	Tilt-Up Angle	Tilt-Down Angle
"B"	"B"	-52.5°	+37.5°	-37.5°	+52.5°	+13°	-13°

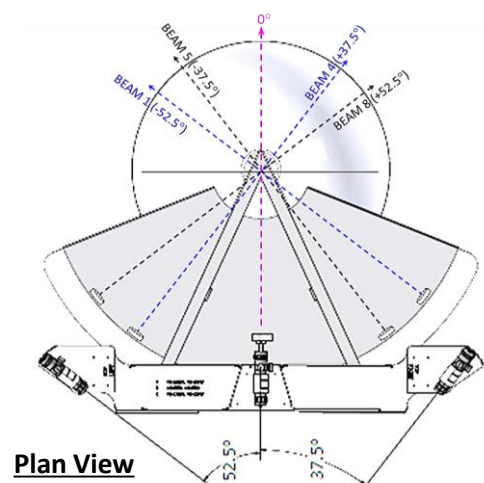


4.20 Mechanically tilt the antenna toward the target area and secure it firmly.

4.30 Once the target is confirmed, mark the location and record it as a reference.



Side View



Plan View