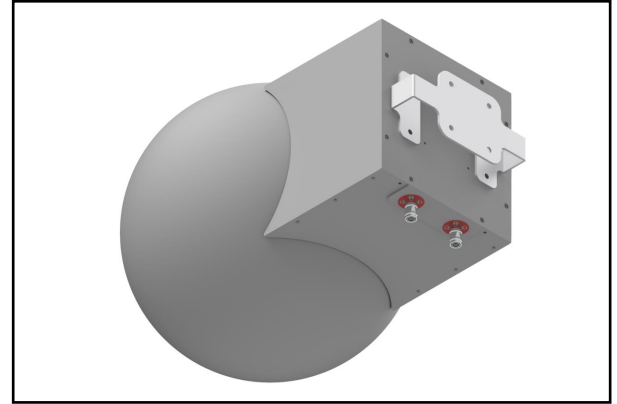


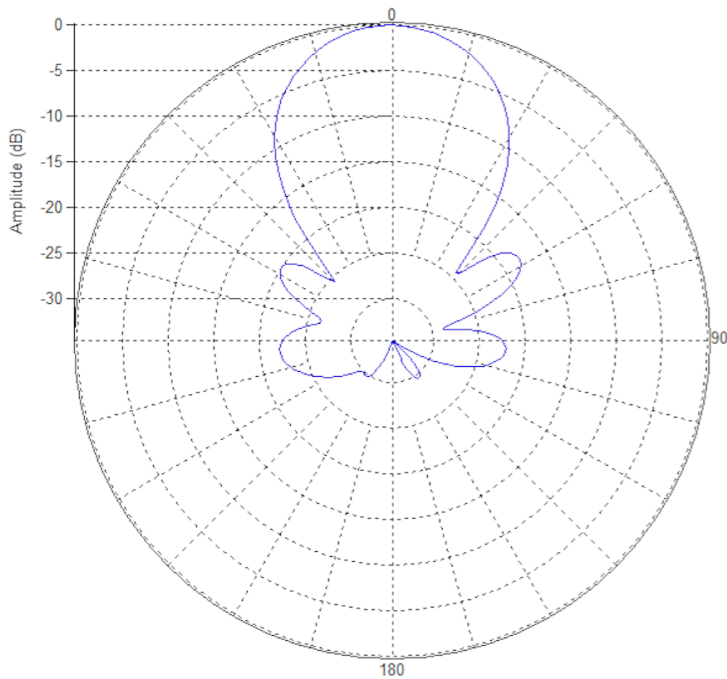
## MS-SB34-T

**Lens Technology Enabled™ Base-Station Antenna perfect for stadium applications, utilizes a patented spherical lens design with 1 isolated low-frequency (617-896MHz) cross-polarized beam. Each Beam has 2 cross-polarized ports for supporting 2X2 MIMO and low side-lobes.**

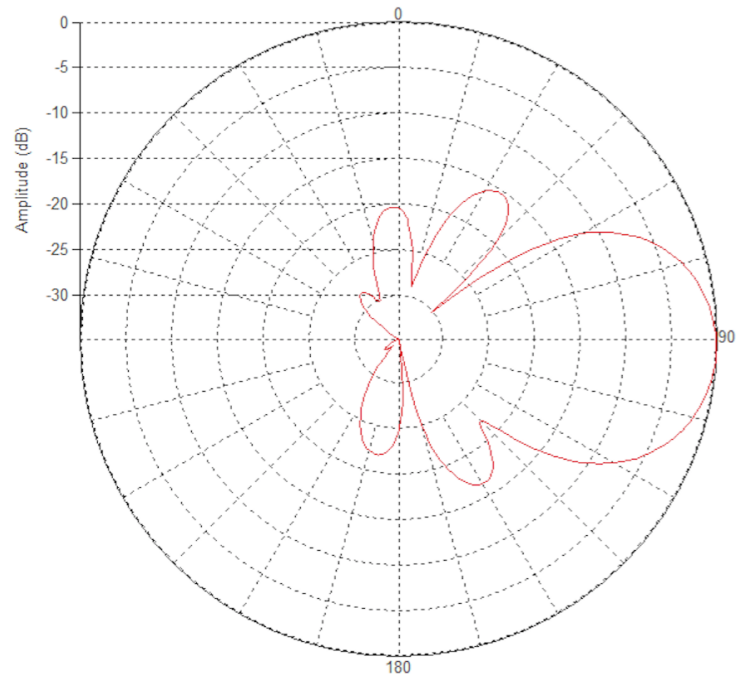


### PATTERN RESULTS:

**Low-Band Horizontal Pattern (800MHz)**



**Low-Band Vertical Pattern (800MHz)**



## TECHNICAL SPECIFICATIONS

Frequency	617-896MHz
Gain	14.2dBi
VSWR	<1.5:1
Polarization	Dual Slant $\pm 45^\circ$
Horizontal Coverage	60°
Horizontal Beamwidth (3dB)	34°
Vertical Beamwidth (3dB)	34°
Total Number of Beams	1
Number of Ports per Beam	2
Number of Ports Total	2
First Sidelobe level	<-18dB
Front to Back Ratio	>28dB
Isolation Port to Port - Polarization	>28dB
Power Rating	250W per port
Intermodulation	<-153dBc
Impedance	50 ohm
Connector Quantity and Type	2 x 4.3-10 female

## MECHANICAL DATA

Dimensions (H x W x D)	45 x 45 x 66 cm 17 x 17 x 25 inch
Antenna Weight	6kg 13 lbs
Radome Material	Polycarbonate
Mounting	TBD

## ENVIRONMENTAL RATINGS

Humidity	95% RH @ +30°C
Temperature	-40°C to +70°C
Wind load (Frontal)	90.2N @ 150km/hr 20.3lbf @ 150km/hr
Wind load (Lateral)	236.2N @ 150km/hr 53lbf @ 150km/hr

## CONNECTOR LAYOUT:

