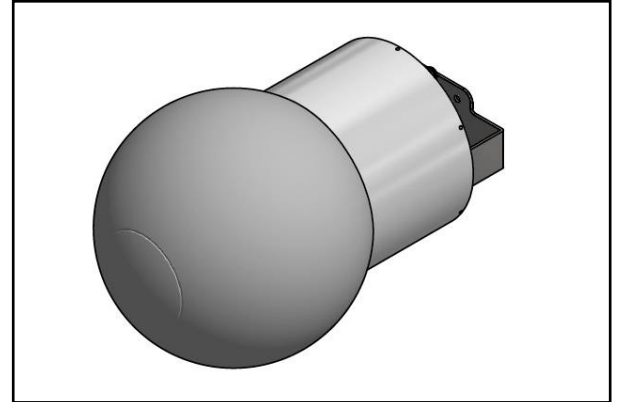


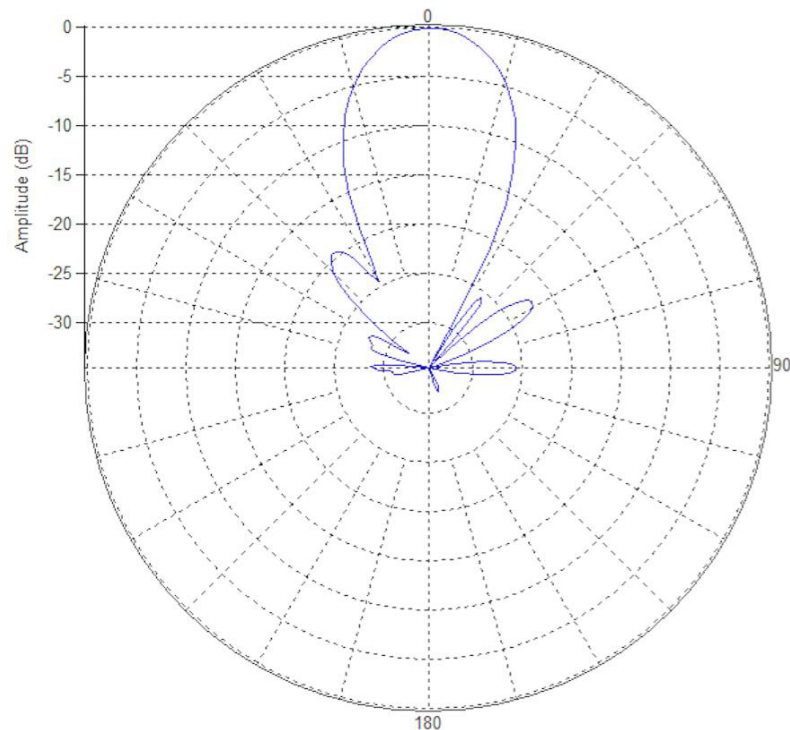
## MS-SB23-H

Lens Technology Enabled™ Base-Station Antenna perfect for stadium applications, utilizes a patented spherical lens design with 1 isolated high-frequency (1695-2690MHz) cross-polarized beam. Beam has 2 cross-polarized ports for supporting 2X2 MIMO and low side-lobes.

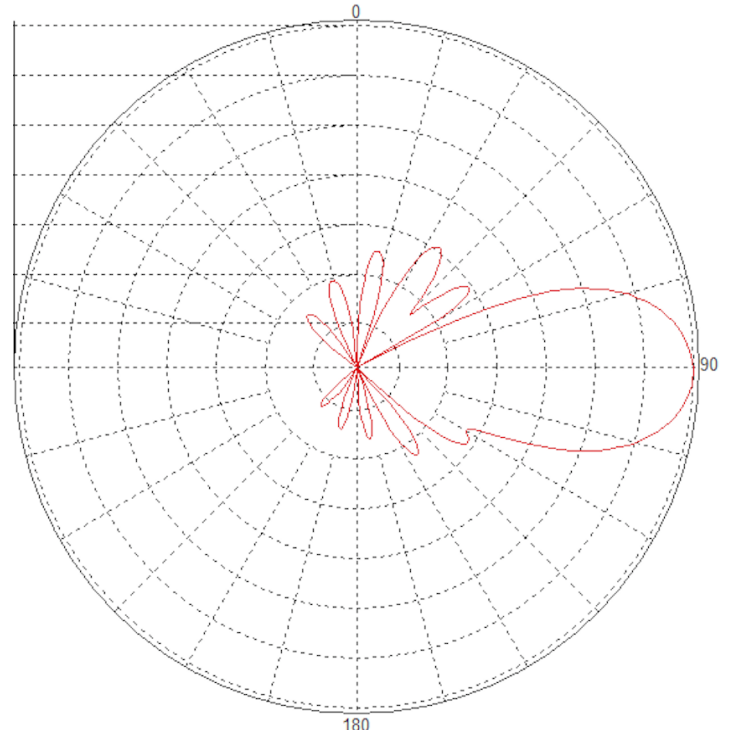


### PATTERN RESULTS:

High-Band Horizontal Pattern (1.80GHz)



High-Band Vertical pattern (1.80GHz)



### TECHNICAL SPECIFICATIONS

|                                       |                           |
|---------------------------------------|---------------------------|
| Frequency                             | 1695-2690 MHz             |
| Gain                                  | 17.5dBi                   |
| VSWR                                  | <1.5:1                    |
| Polarization                          | Dual Slant $\pm 45^\circ$ |
| Horizontal Coverage                   | 40°                       |
| Horizontal Beamwidth (3dB)            | 23°                       |
| Vertical Beamwidth (3dB)              | 23°                       |
| Total Number of Beams                 | 1                         |
| Number of Ports per Beam              | 2                         |
| First Sidelobe level                  | <-20dB                    |
| Front to Back Ratio                   | >28dB                     |
| Isolation Port to Port - Polarization | >28dB                     |
| Power Rating                          | 250W per port             |
| Intermodulation                       | <-153dBc                  |
| Impedance                             | 50 ohm                    |
| Connector Quantity and Type           | 2 x 4.3-10 female         |

### MECHANICAL DATA

|                        |  |
|------------------------|--|
| Dimensions (H x W x D) | 36.8 x 36.8 x 54.8 cm<br>14.5 x 14.5 x 21.6 inch |
| Antenna Weight         | 4kg<br>9 lbs                                     |
| Radome Material        | Polycarbonate                                    |
| Mounting               | TBD  |

### ENVIRONMENTAL RATINGS

|                     |  |
|---------------------|--|
| Humidity            | 95% RH @ +30°C                           |
| Temperature         | -40°C to +70°C                           |
| Wind load (Frontal) | 61.13N @ 150km/hr<br>13.74lbf @ 150km/hr |
| Wind load (Lateral) | 110.3N @ 150km/hr<br>24.8lbf @ 150km/hr  |

### CONNECTOR LAYOUT:

