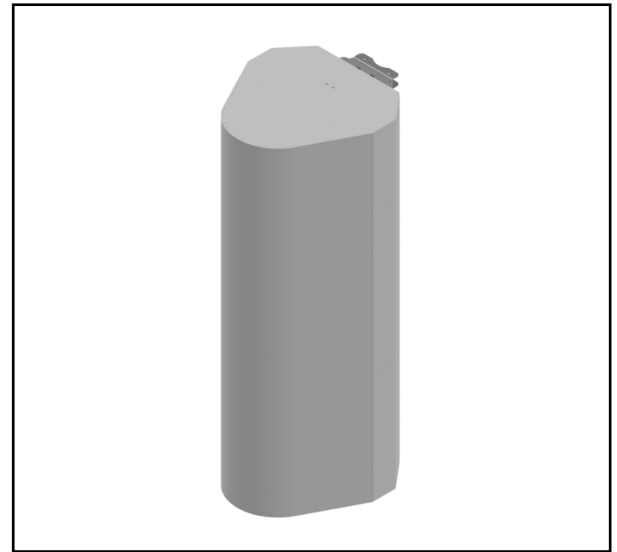


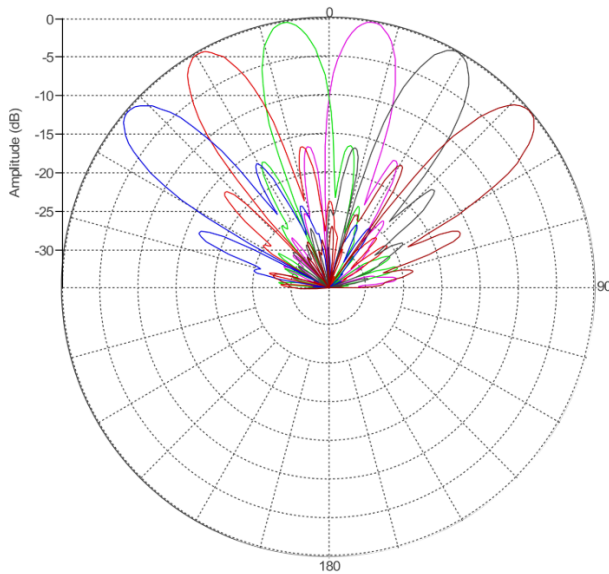
## MS-MBC-6-H4-8

**Multi-Beam Cylindrical Base-Station Lens Antenna;**  
**Six isolated high frequency (1695-2690 MHz) cross-polarized beams.**  
**Each beam has four ports to support 4x4 MIMO.**  
**RET (Smart Bias Tee & AISG 2.0) with 2° - 12° for each beam.**

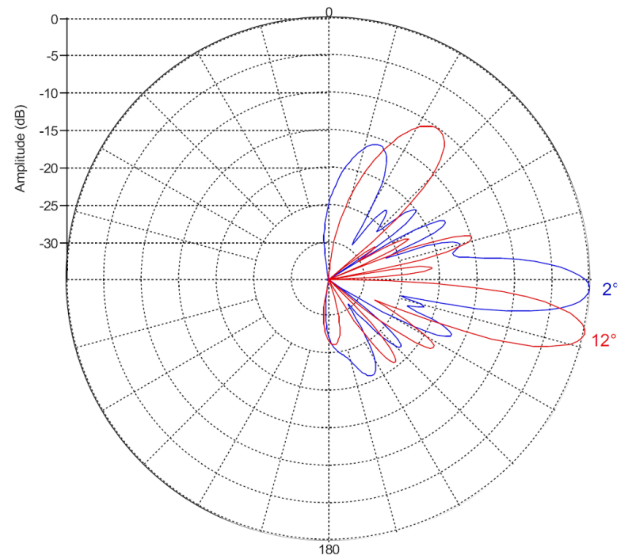


### PATTERN RESULTS:

**Horizontal Pattern (1.80GHz)**



**Vertical Pattern at 2° and 12° (1.80GHz)**



### TECHNICAL SPECIFICATIONS

Frequency	1695 – 2690 MHz
Gain	23.5dBi
VSWR	<1.5:1
Polarization	Dual Slant ±45°
Horizontal Coverage	120°
Horizontal Beamwidth (3dB level)	12°
Horizontal Beamwidth (10dB level)	20°
Vertical Beamwidth (3dB level)	7.5°
Beam Cross-over	10dB typical
Total Number of Beams	6
Number of Ports per Beam	4
Number of Ports Total	24
RET (AISG & SBT )	2°-12°
1st Upper Side Lobe Suppression	15dB
Azimuth Sidelobe Level	-18dB
Front to Back Ratio @ 180°	28dB
Isolation Port to Port - Polarization	28dB
Isolation Port to Port - Beam	28dB
Power Rating	150W per port
Intermodulation	<-153dBc
Impedance	50 ohm
Connector Quantity and Type	24 x 4.3-10 female

### MECHANICAL DATA

Dimensions (H x W x D)	214 x 108.2 x 100.3 cm 84.3 x 42.6 x 39.5 inch
Antenna Weight	120 Kg 264.5 lbs
Radom	Fibreglass
Mounting	Standard pipe mount Compatible pipe diameter: 6.1 – 11.4 cm 2.4 – 4.5 inch

### ENVIRONMENTAL RATINGS

Humidity	95% RH @ +30°C
Temperature	-40°C to +70°C
Wind Load @ 150 km/hr	N/lbf Frontal: 1671/376 Lateral: 2215/498 Rear: 2202/450

### CONNECTOR LAYOUT:

