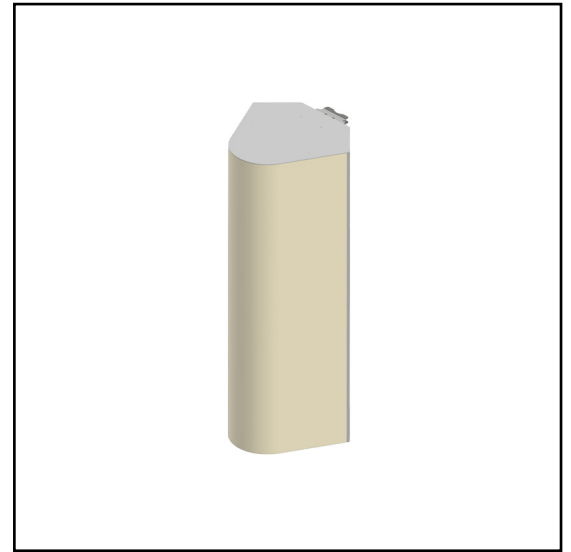


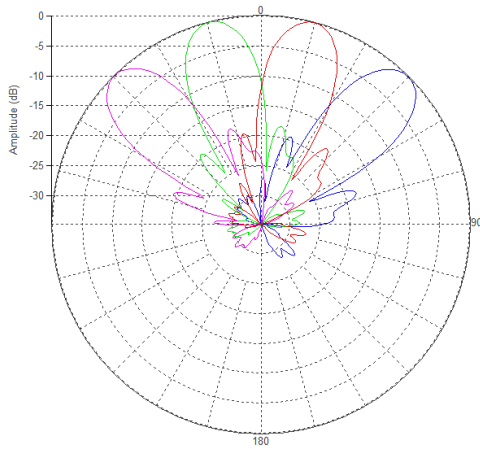
MS-MBC-4.2-H4-12-L4-20

Multi-Beam Dual Band Cylindrical Lens Antenna:
4 independent high-frequency (1695 – 2690 MHz) dual-polarized beams
and 2 independent low-frequency (698 – 960 MHz) dual-polarized beams
with 4x4 MIMO support. Each beam has independent RET, for high
frequency 2°-15° and for low frequency 2°-20°.

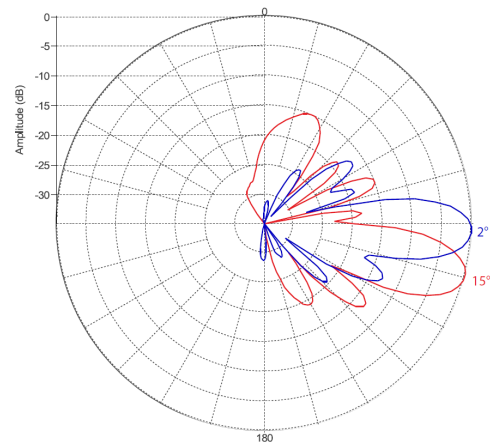


PATTERN RESULTS:

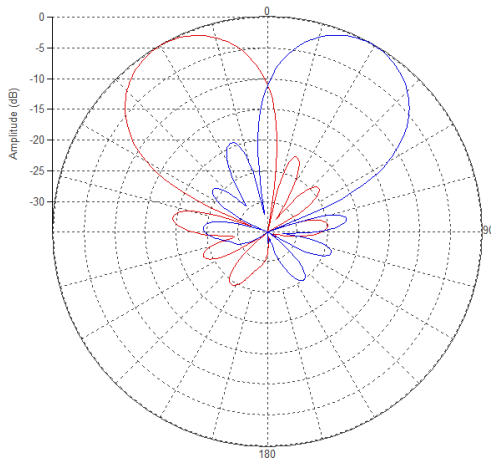
High-band Horizontal Pattern (1.92GHz)



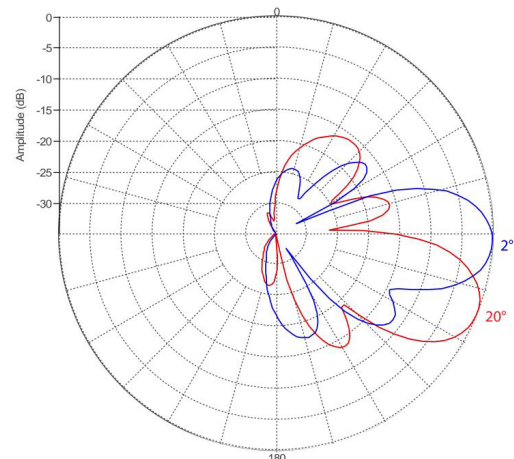
High-band Vertical Pattern (1.92GHz) at tilt 2° and 15°



Low-band Horizontal Pattern (0.8GHz)



Low-band Vertical Pattern (0.8GHz) at tilt 2° and 20°



TECHNICAL SPECIFICATIONS PER BEAM

Frequency, MHz	698-960	1695-2690
Gain (all tilts/ports), dBi	15	20.5
VSWR	1.5:1	1.5:1
Polarization	Dual Slant $\pm 45^\circ$	Dual Slant $\pm 45^\circ$
Horizontal Coverage	120°	120°
Horizontal Beamwidth (10dB level)	60°	31°
Horizontal Beamwidth (3dB level)	34°	18°
Vertical Beamwidth (3dB level)	20°	12°
Beam Cross-over	10dB typical	10dB typical
Total Number of Beams	2	4
Total Number of Ports	8	16
Beam Tilt	2° to 20°	2° to 15°
First Sidelobe Level	<-15dB	<-15dB
Front to Back Ratio	>28dB	>28dB
Isolation Port to Port - Polarization	>26dB	>26dB
Isolation Port to Port - Beam	>26dB	>26dB
Power Rating	250W per port	200W per port
Intermodulation	<-153dBc	<-153dBc
Impedance	50 ohm	
Connector Quantity and Type	8 x 4.3-10 female	16 x 4.3-10 female

MECHANICAL DATA

Dimensions (H x W x D)	170.1 x 77.2 x 68.5 cm 67 x 30.4 x 27 inch
Antenna Weight	67 kg 147.7lbs
Radome Material	Fiber Glass
Mounting	Adjustable Clamps Compatible pipe diameter: 6.1 – 11.4 cm 2.4 – 4.5 inch

ENVIRONMENTAL RATINGS

Humidity	95% RH @ +30°C												
Temperature	-40°C to +70°C												
Wind loading @ 150km/h	<table border="1"> <tr> <td></td> <td>N</td> <td>lbf</td> </tr> <tr> <td>Frontal:</td> <td>966</td> <td>217.2</td> </tr> <tr> <td>Lateral:</td> <td>1192</td> <td>268</td> </tr> <tr> <td>Rear:</td> <td>1117</td> <td>251.1</td> </tr> </table>		N	lbf	Frontal:	966	217.2	Lateral:	1192	268	Rear:	1117	251.1
	N	lbf											
Frontal:	966	217.2											
Lateral:	1192	268											
Rear:	1117	251.1											

CONNECTOR LAYOUT:

