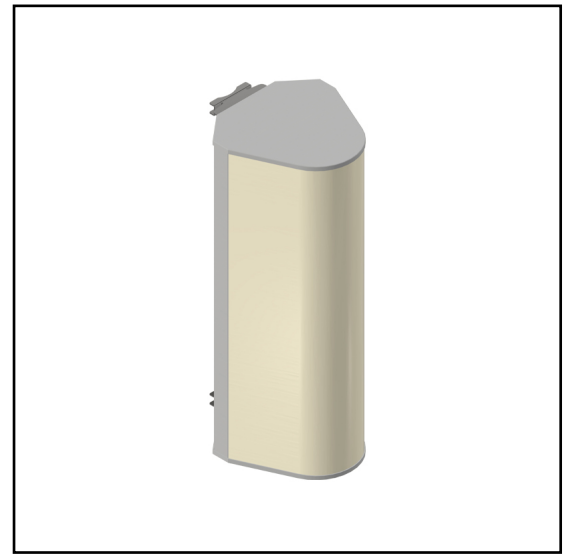


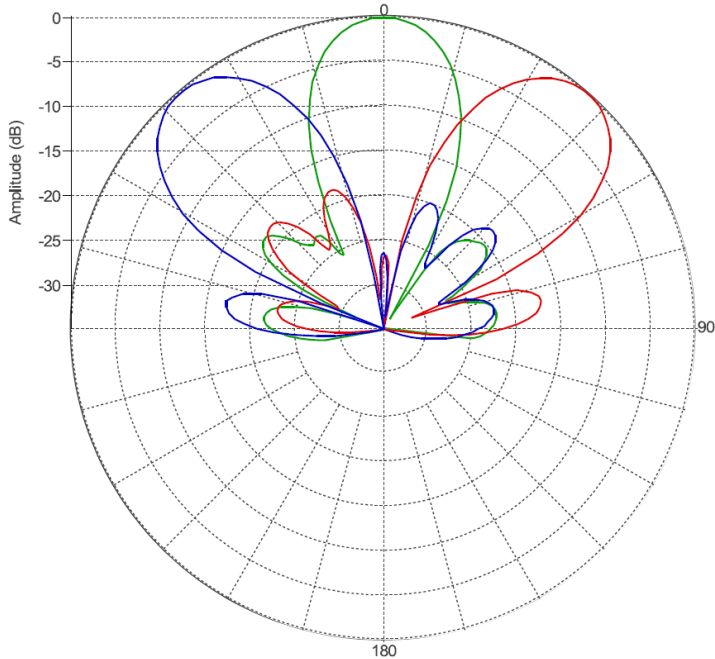
MS-MBC-3-H4-12

Multi-Beam Cylindrical Base-Station Lens Antenna;
Three isolated high frequency (1695 - 2690 MHz) cross-polarized
beams. Each beam has four ports to support 4x4 MIMO.
RET (Smart Bias Tee & AISG 2.0) with 2°-15° for each beam.

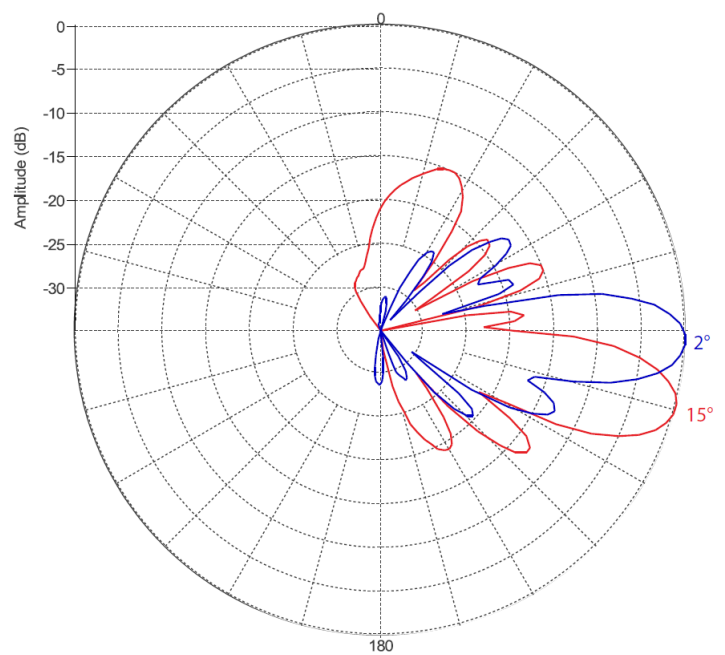


PATTERN RESULTS:

High-Band Horizontal Pattern (1.80GHz)



Vertical pattern at 2° tilt and 15° tilt (1.80GHz)



TECHNICAL SPECIFICATIONS

Frequency	1695 - 2690 MHz
Gain	18.5 dBi
VSWR	<1.5:1
Polarization	Dual Slant ±45°
Horizontal Coverage	120°
Horizontal Beamwidth (3dB level)	23°
Horizontal Beamwidth (10dB level)	40°
Vertical Beamwidth (3dB)	12.5°
Total Number of Beams	3
Number of Ports per Beam	4
Number of Ports Total	12
RET (AISG & SBT)	2° to 15°
First Upper Sidelobe level	< -15dB
Azimuth Sidelobe level	< -15dB
Front to Back Ratio	>28dB
Isolation Port to Port - Polarization	28dB
Isolation Port to Port - Beam	25dB
Power Rating	200W per port
Intermodulation	<-153dBc
Impedance	50 ohm
Connector Quantity and Type	12 x 4.3-10 female

MECHANICAL DATA

Dimensions (H x W x D)	127 x 48.2 x 55.8 cm 50 x 19 x 22 inch
Antenna Weight	30.74 kg 67.63 lbs
Radome Material	Fiber Glass
Mounting	2 position pipe mount Compatible pipe diameter: 6.1 – 11.4 cm 2.4 – 4.5 inch

ENVIRONMENTAL RATINGS

Humidity	95% RH @ +30°C
Temperature	-40°C to +70°C
Wind load @ 150km/h	N/lbf Frontal: 471/106 Lateral: 429/96 Rear: 471/106

CONNECTOR LAYOUT:

