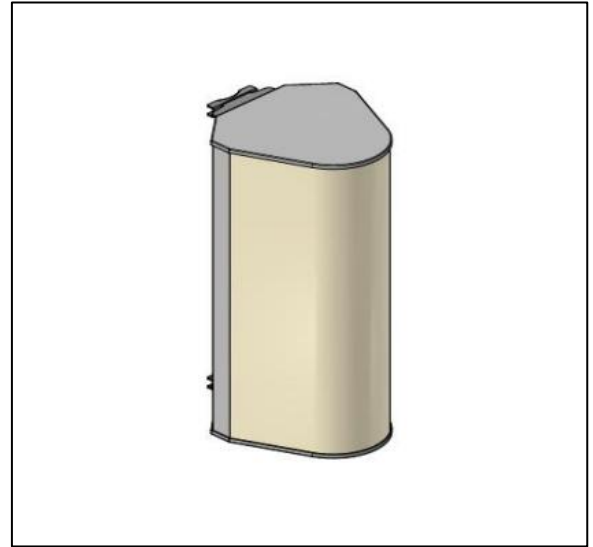


3 BEAMS | 1695-2690MHz | 2T2R

Lens Technology Enabled™ Multi-Beam Cylindrical Base-Station Lens Antenna:

- Utilizes a patented cylindrical lens design
- 3 isolated cross-polarized beams for Mid-Band
- 120° coverage with highest beam stability
- 2x2 MIMO capability per beam
- RET AISG 2.0 & Smart Bias Tee
- Independent tilt per beam from 2° to 15°
- No beam squinting as compared to Butler matrix antennas
- Low sidelobes for all beam tilts
- Excellent Front-to-Back and CPR performance
- High-capacity solution for stadiums, arenas & special events
- Rugged mechanical design



ELECTRICAL SPECIFICATIONS, BASTA

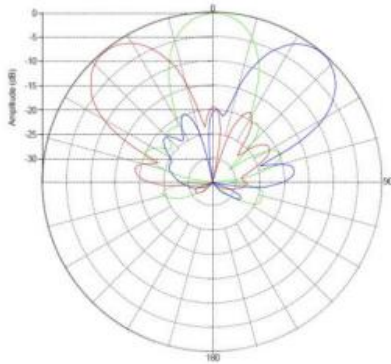
FREQUENCY, MHZ	1695-1880	1850-1990	1920-2170	2300-2400	2490-2690
GAIN, BY ALL TILTS/PORTS, DBI	18.3+/-0.5	18.6+/-0.5	19.2+/-0.5	19.5+/-0.5	19.5+/-0.7
VSWR	1.5:1	1.5:1	1.5:1	1.5:1	1.5:1
HORIZONTAL COVERAGE, DEG	120	120	120	120	120
HORIZONTAL BEAM CENTERS, DEG	-40±1.5; 0±1.5; 40±1.5				
HORIZONTAL BEAMWIDTH, DEG	25±1	24±1	23±1	22±0.5	21±0.7
BEAM CROSSOVER, DB	8	9	10	11	12
HORIZONTAL SIDELOBE, DB	-17.5	-17	-16.5	-17	-17
FRONT-TO-BACK RATIO TOTAL POWER AT 180±30°, DB	30	30	30	30	30
CPR AT BORESIGHT, DB	23	22	20	20	21
CPR AT 10DB BEAMWIDTH, DB	13	12	11	11	11
REMOTE ELECTRICAL BEAM TILT, DEG	2 - 15				
VERTICAL BEAMWIDTH, DEG	16±1	15±0.7	14±0.7	12.7±0.5	11.5±0.6
USLS, BEAMPEAK TO 20° ABOVE BEAMPEAK, DB	15	16	16	16	16
ISOLATION PORT TO PORT, POLARIZATION, DB	26	26	26	26	26
ISOLATION PORT TO PORT, BEAM, DB	24	24	24	24	24
PIM, 3RD ORDER, 2X20W, DBC	-153				
MAX. POWER PER PORT, W	150 (at 40°C ambient temperature)				

ELECTRICAL SPECIFICATIONS

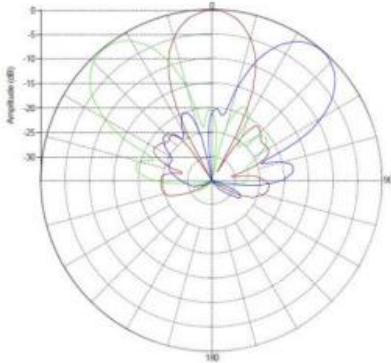
IMPEDANCE	50 Ohm
OPERATING FREQUENCY BAND	1695-2690MHz
POLARIZATION	$\pm 45^\circ$
NUMBER OF BEAMS	3
NUMBER OF PORTS PER BEAM	2
CONNECTOR QUANTITY AND TYPE	6 x 4.3-10 female
TOTAL POWER, MAX	800W

PATTERN RESULTS

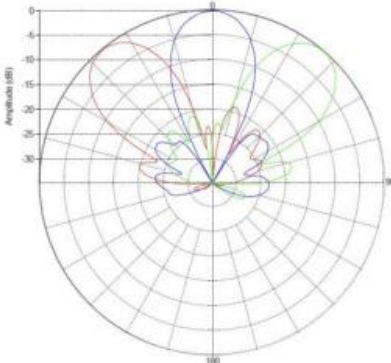
Horizontal Patterns



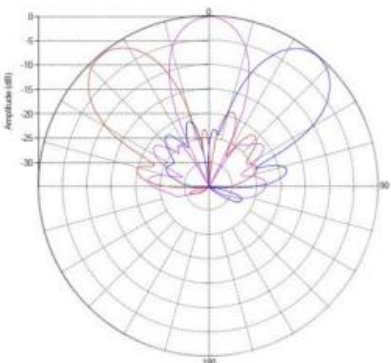
1.80GHz



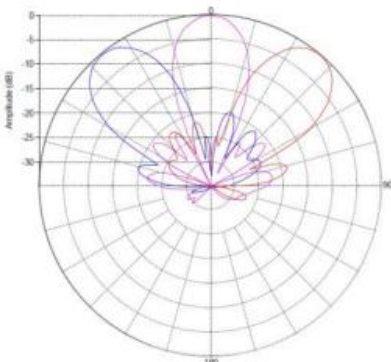
1.95GHz



2.1GHz

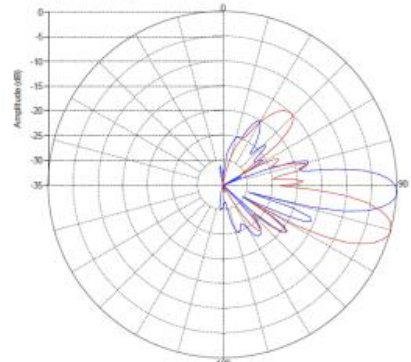
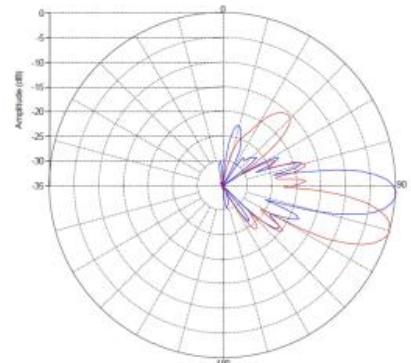
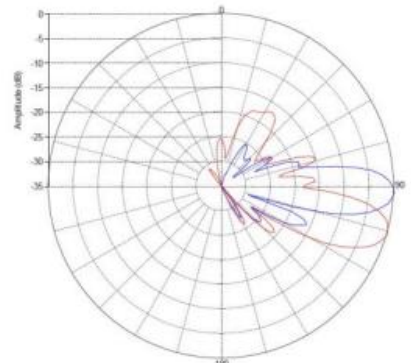
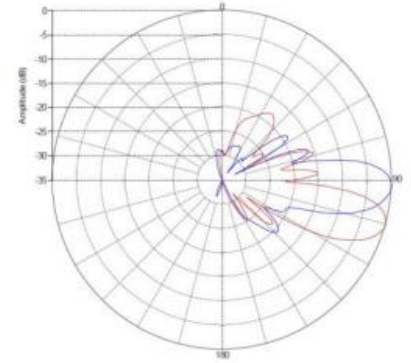
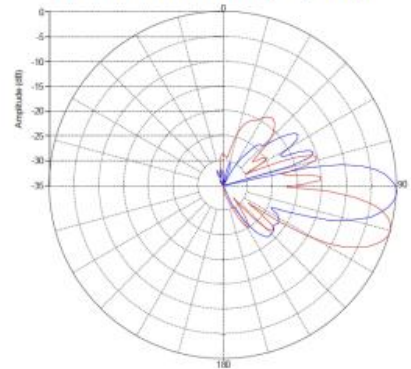


2.36GHz



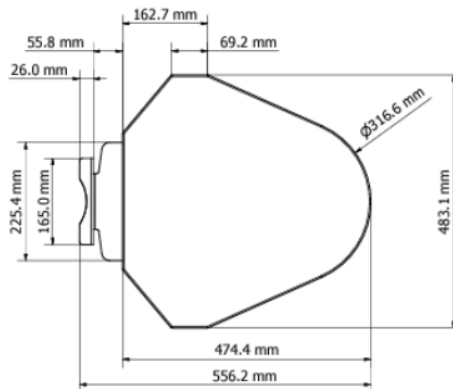
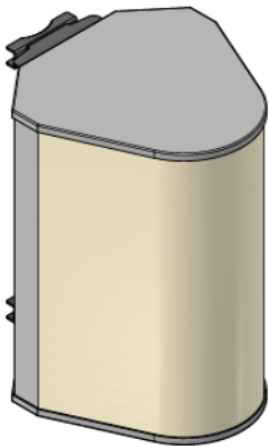
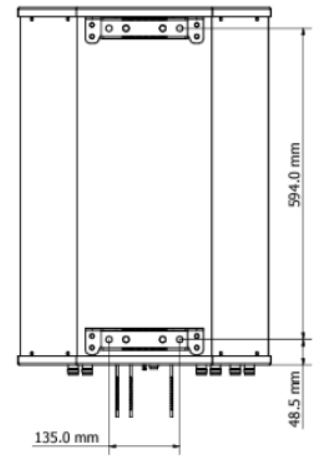
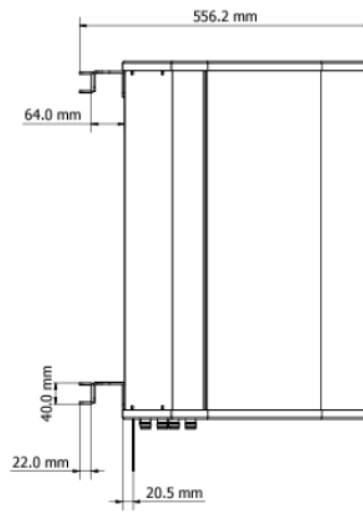
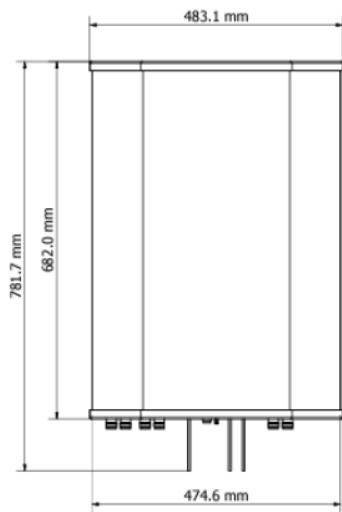
2.59GHz

Vertical Patterns (2°, 15°)



MECHANICAL SPECIFICATIONS

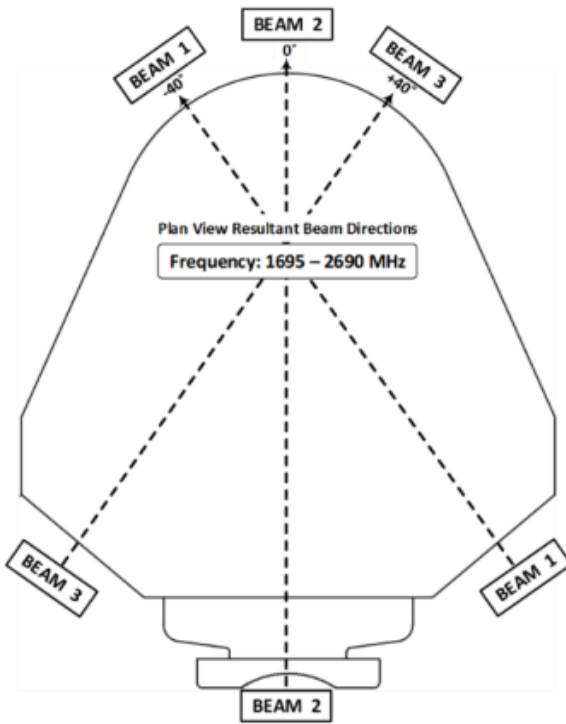
ANTENNA WEIGHT (WITHOUT BRACKET)	44.27lbs	20.08kg
BRACKET WEIGHT	4.59lbs	2.08kg
ANTENNA WEIGHT (WITH BRACKET)	48.85lbs	22.16kg
HEIGHT	30.7inch	78cm
WIDTH	19inch	48.2cm
DEPTH	21.9inch	55.6cm
RADOME MATERIAL	Fiberglass	
RADOME COLOR	RAL 7005	
WIND LOADING @150KM/HR FRONTAL	244.8N	55lbf
WIND LOADING @150KM/HR LATERAL	411N	92lbf
WIND LOADING @150KM/HR REAR	292N	66lbf



ENVIRONMENTAL RATINGS

HUMIDITY	95% RH @ +30°C
TEMPERATURE	-40°C to +70°C

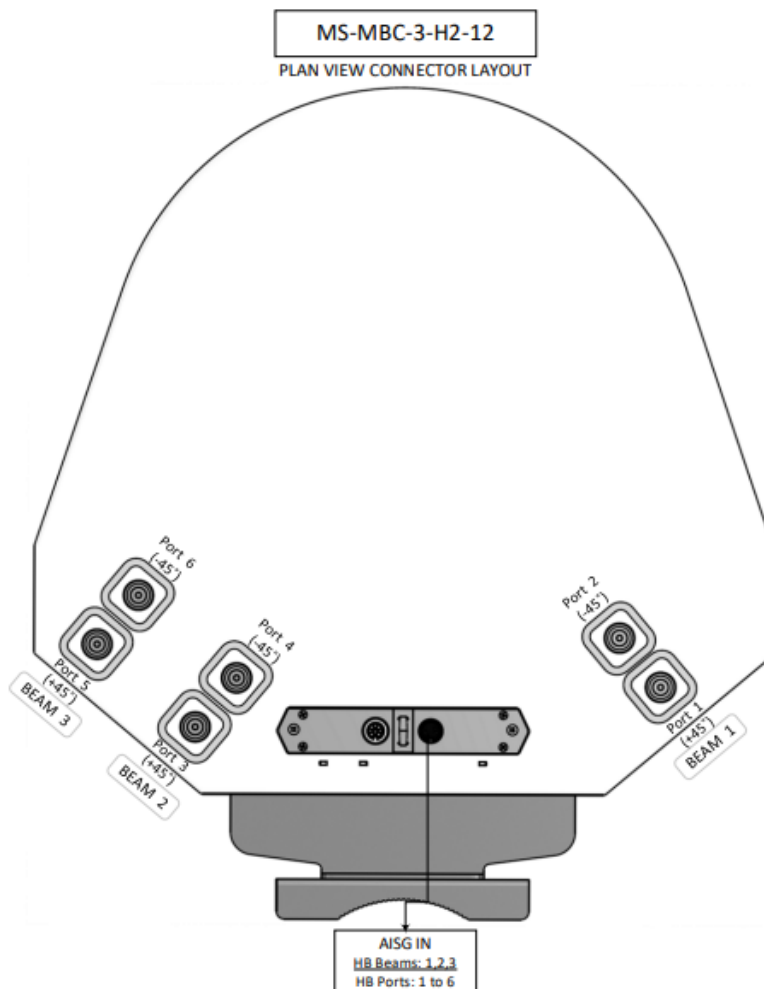
BEAM, PORT, RF CONNECTOR & RET LAYOUT



Antenna top view

BEAM 3	BEAM 2	BEAM 1
Port 6 (-45°)	Port 4 (-45°)	Port 2 (-45°)
Port 5 (+45°)	Port 3 (+45°)	Port 1 (+45°)

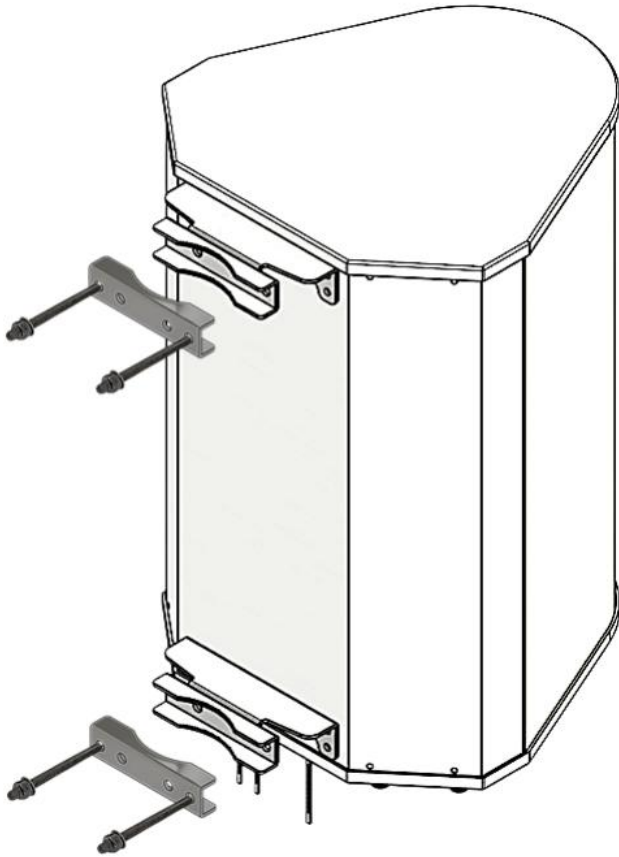
Connector port table



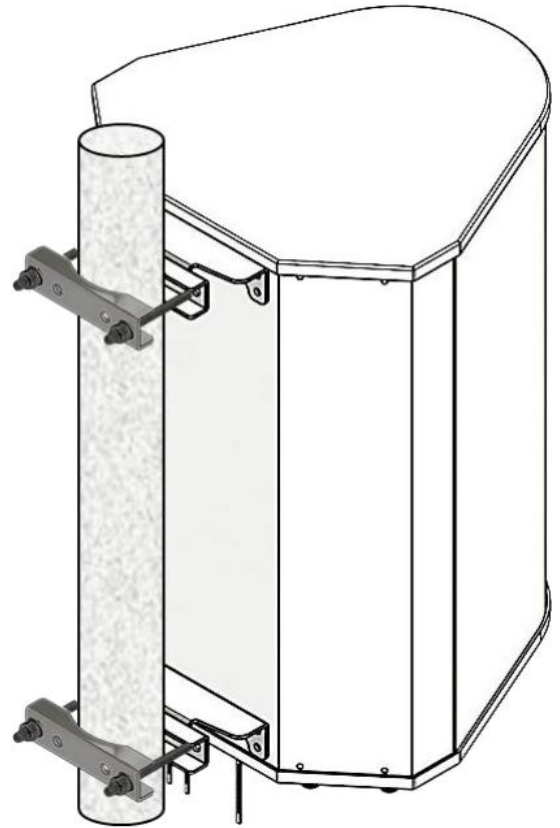
Antenna top view

MOUNTING

COMPATIBLE PIPE DIAMETER	2.4 – 4.5 in	6.1 – 11.4 cm
BRACKET WEIGHT	4.59 lb.	2.08 kg



Before Installation



After Installation

REVISION HISTORY

DATE	DOCUMENT	
11/15/2024	Initial BASTA Datasheet Released	
11/26/2024	Windloading Updated	
11/30/2025	Bracket Info Addition	