

Date	Prepared by	Approved by	Document nos	Rev
7 Jul 2021	Ray Ling	Pavel	MBA-7-C2-IM-001	0

INSTRUCTION MANUAL MS-MBA-7-C2

TABLE OF CONTENTS:

1.00 BEAMS & CONNECTORS:

- 1.10 Plan View Resultant Beam Direction
- 1.20 Connector Detail
- 1.30 Connector Layout
- 1.40 Connector Ports Table

2.00 PATTERN DIAGRAM

- 2.10 Horizontal Pattern
- 2.20 Vertical Pattern

3.00 MANUAL TILT ADJUSTMENT

4.00 BRACKET INSTALLATION (All MBA's Model)

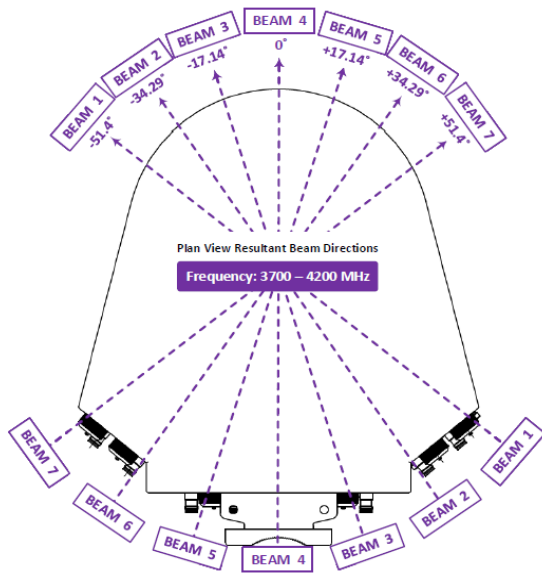
- 4.10 Bolts & Nuts Requirements
 - 4.11 Bolts & Nuts
 - 4.12 Bracket
- 4.20 Tools Requirement
 - 4.21 Adjustable Spanner
 - 4.22 M12 Spanner
- 4.30 Bracket Spacing & Installation Sample

Revision History:

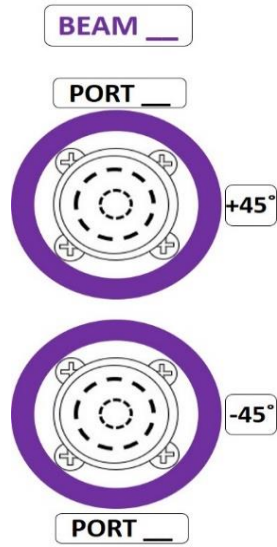
Date	Description	Revised by	Revision nos.

1.00 BEAMS & CONNECTORS:

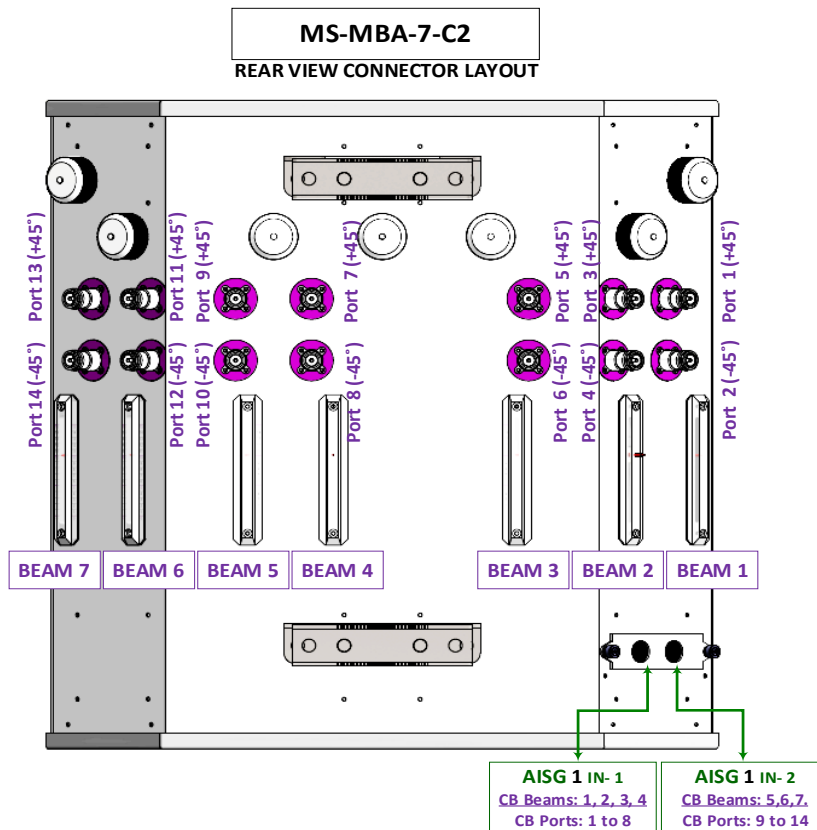
1.10 Plan View Resultant Beam Direction



1.20 Connector Detail



1.30 Connector Layout

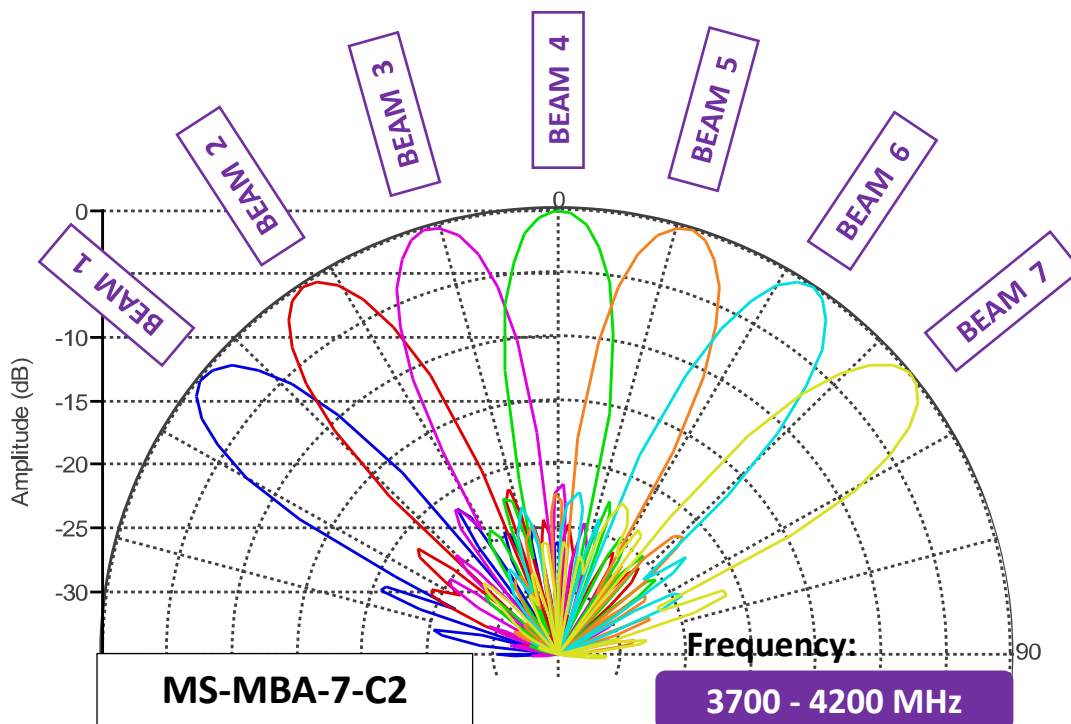


1.40 Connector Ports Table

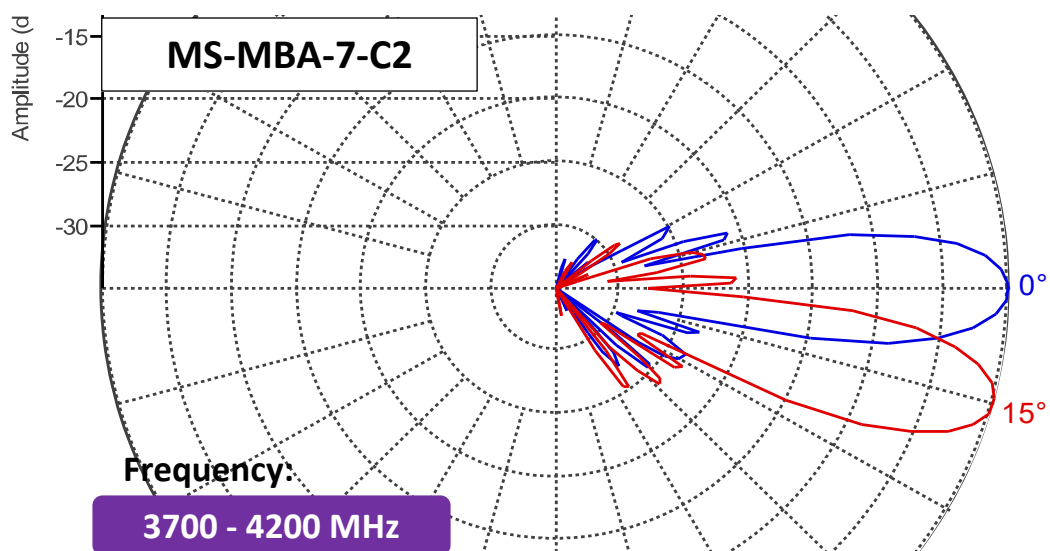
BEAM 7	BEAM 6	BEAM 5	BEAM 4	BEAM 3	BEAM 2	BEAM 1
Port 13 (+45°)	Port 11 (+45°)	Port 9 (+45°)	Port 7 (+45°)	Port 5 (+45°)	Port 3 (+45°)	Port 1 (+45°)
Port 14 (-45°)	Port 12 (-45°)	Port 10 (-45°)	Port 8 (-45°)	Port 6 (-45°)	Port 4 (-45°)	Port 2 (-45°)

2.00 PATTERN DIAGRAM

2.10 Horizontal Pattern

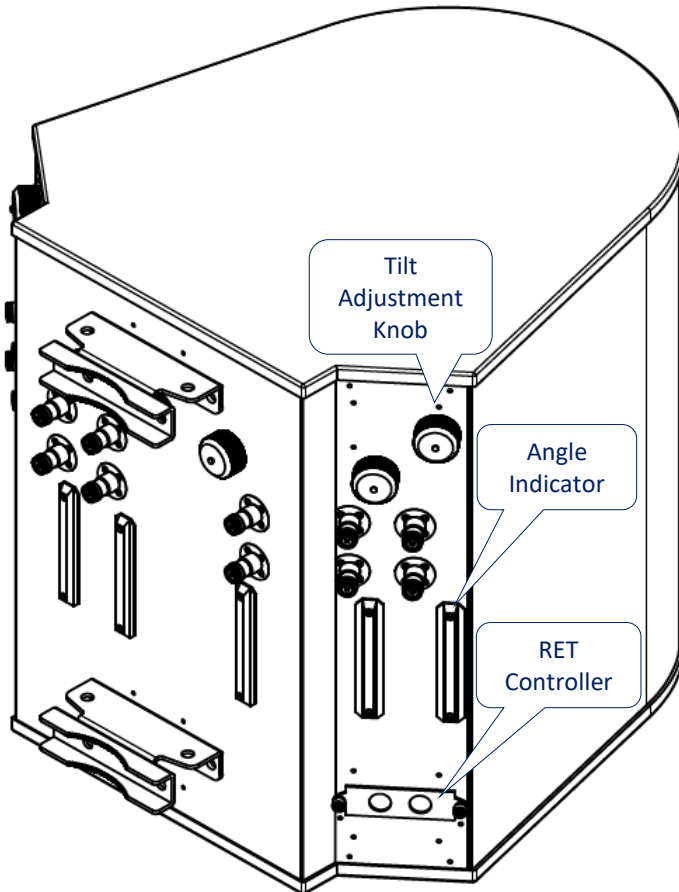


2.20 Vertical Pattern



3.00 MANUAL TILT ADJUSTMENT

1	The MBA antenna come in RET mode as default, but if needed can also be manually adjusted. To do so, please unscrew the waterproof cap behind the element whose tilt is to be adjusted.
2	By Default the knob is on engaged mode, pull out the handle for manual tilt adjustment, turn the handle to change the tilt.
3	When done, push the handle back in, screw the waterproof cap back to the position.



1. Engaged with internal RET motor position



2. Unscrew/ Screw the cap for tilt adjustment process



3. Pull knob out to disengaged RET for tilt adjustment



4.00 BRACKET INSTALLATION (All MBA's Model)

4.10 Bolts & Nuts Requirements

Bracket Qty	Bolts		Nuts	
	Size	Qty	Size	Qty
2	M12 x 200mm	4	M12	10

4.11 Bolts & Nuts

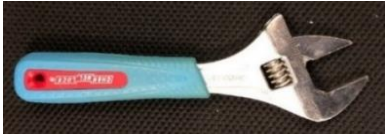


4.12 Bracket



4.20 Tools Requirement

4.21 Adjustable Spanner



4.22 M12 Spanner



4.30 Bracket Spacing & Installation Sample

