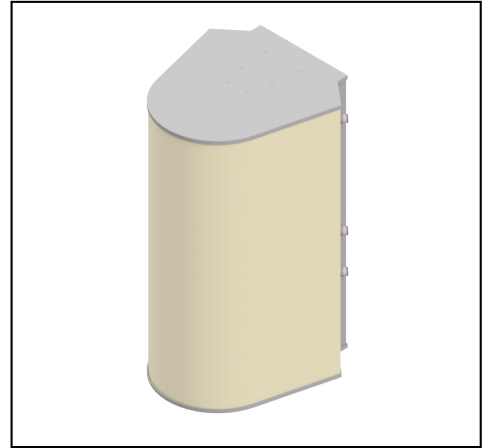


MS-MBA-6.6-F2-F2-45M

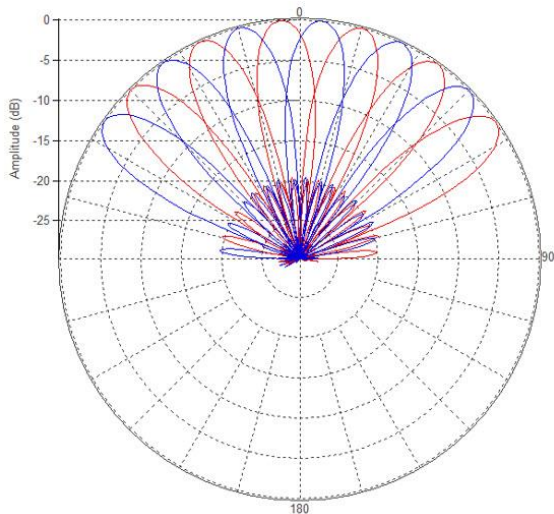
Multi-Beam Mini Lens Antenna: 12 independent high - frequency (3.4 – 4.0GHz) cross-polarized beams with 2X2 MIMO.

Each beam has independent tilt 0 to 15°.

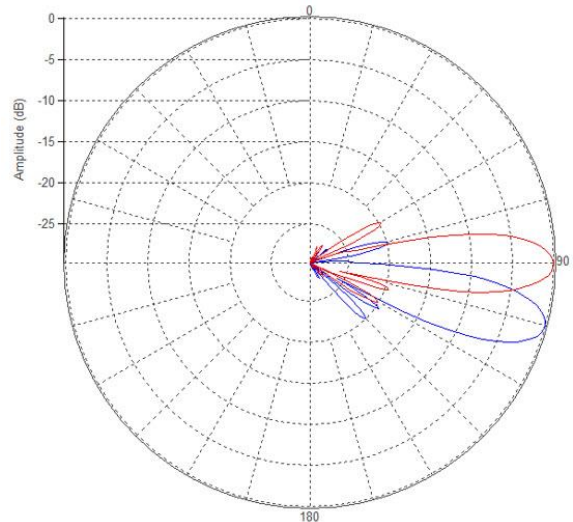


PATTERN RESULTS:

Horizontal Pattern (3.4GHz)



Vertical Pattern (3.4GHz) at tilt 0° and 15°



TECHNICAL SPECIFICATIONS

| | |
|---------------------------------------|-----------------|
| Frequency | 3.4 – 4.0GHz |
| Gain | 22.5dBi |
| VSWR | <1.5:1 |
| Polarization | Dual Slant ±45° |
| Horizontal Coverage | 120° |
| Horizontal Beamwidth (10dB level) | 21 - 18° |
| Horizontal Beamwidth (3dB level) | 12.3 – 10.4° |
| Vertical Beamwidth (10dB level) | 21 - 18° |
| Vertical Beamwidth (3dB level) | 12.3 – 10.4° |
| Beam Cross-over | 2.2 – 2.5dB |
| Total Number of Beams | 12 |
| Number of Ports Total | 24 |
| Tilt Per Cross-Pol | 0 - 15° |
| Sidelobe level | <-20dB typical |
| Front to Back Ratio | >28dB |
| Isolation Port to Port - Polarization | >28dB |
| Isolation Port to Port - Beam | >28dB |
| Power Rating | 150W per port |
| Intermodulation | <-153dBc |
| Impedance | 50 ohm |
| Connector Quantity and Type | 6 x MQ4 |

MECHANICAL DATA

| | |
|------------------------|---|
| Dimensions (H x W x D) | 110 x 62 x 72 cm 43.4 x 24.3 x 28.4 inch |
| Antenna Weight | 32kg 71lbs |
| Radome Material | Fiber Glass |
| Mounting | Adjustable Clamps Compatible pipe diameter: 6.1 – 11.4 cm 2.4 – 4.5 inch |

ENVIRONMENTAL RATINGS

| | |
|------------------------|---|
| Humidity | 95% RH @ +30°C |
| Temperature | -40°C to +70°C |
| Wind Load @ 150km / hr | N/Ibf Frontal : 386 / 86.8 Lateral : 523 / 117.6 Rear: 452 / 101.6 |

CONNECTOR LAYOUT:

