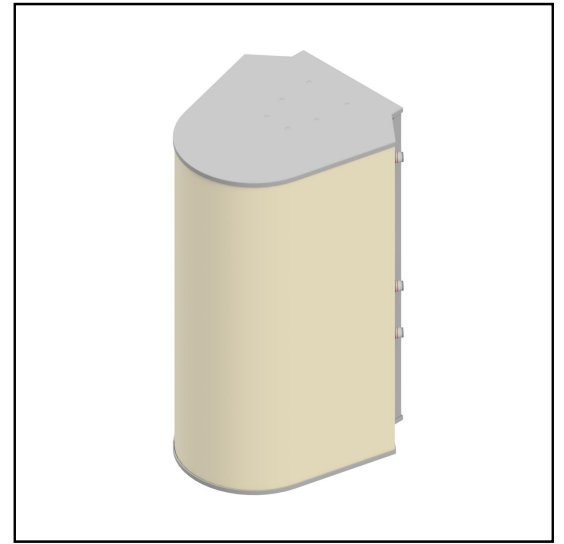


MS-MBA-6.6-F2-F2-45M

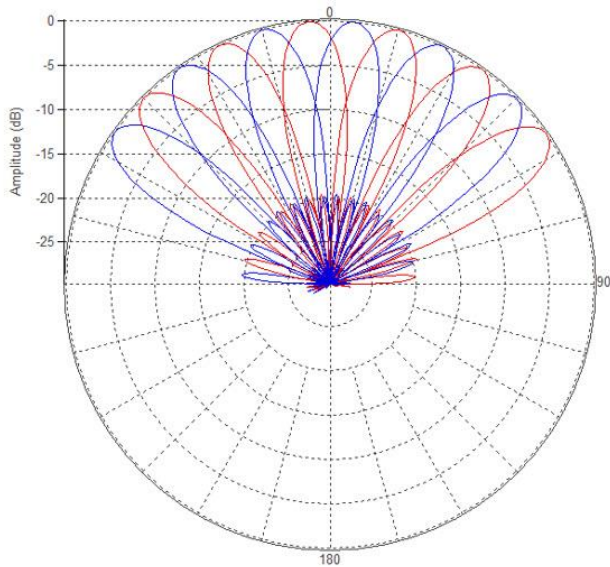
Multi-Beam Mini Lens Antenna: 12 independent high - frequency (3.4 – 4.0GHz) cross-polarized beams with 2X2 MIMO.

Each beam has independent tilt 0 to 15°.

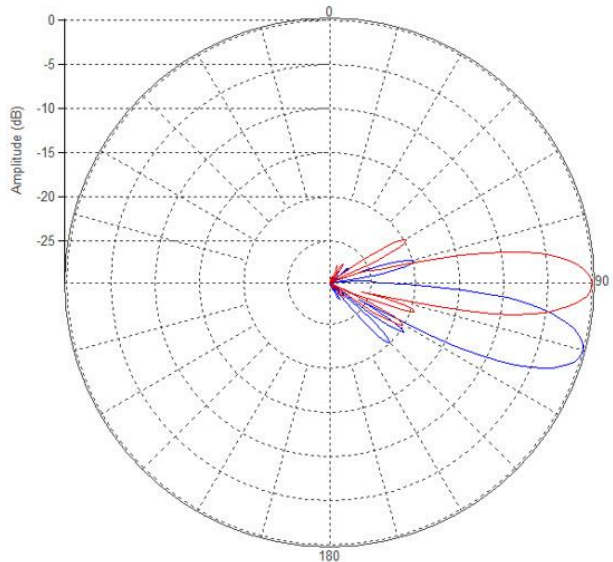


PATTERN RESULTS:

Horizontal Pattern (3.4GHz)



Vertical Pattern (3.4GHz) at tilt 0° and 15°



TECHNICAL SPECIFICATIONS

Frequency	3.4 – 4.0GHz
Gain	22.5dBi
VSWR	<1.5:1
Polarization	Dual Slant ±45°
Horizontal Coverage	120°
Horizontal Beamwidth (10dB level)	21 - 18°
Horizontal Beamwidth (3dB level)	12.3 – 10.4°
Vertical Beamwidth (10dB level)	21 - 18°
Vertical Beamwidth (3dB level)	12.3 – 10.4°
Beam Cross-over	2.2 – 2.5dB
Total Number of Beams	12
Number of Ports Total	24
Tilt Per Cross-Pol	0 - 15°
Sidelobe level	<-20dB typical
Front to Back Ratio	>28dB
Isolation Port to Port - Polarization	>28dB
Isolation Port to Port - Beam	>28dB
Power Rating	150W per port
Intermodulation	<-153dBc
Impedance	50 ohm
Connector Quantity and Type	6 x MQ4

MECHANICAL DATA

Dimensions (H x W x D)	110 x 62 x 72 cm 43.4 x 24.3 x 28.4 inch
Antenna Weight	37kg/81.5lbs [w/o Bracket] 39.1kg/86.2lbs [w/Bracket]
Radome Material	Fiber Glass
Mounting	Adjustable Clamps Compatible pipe diameter: 6.1 – 11.4 cm 2.4 – 4.5 inch

ENVIRONMENTAL RATINGS

Humidity	95% RH @ +30°C
Temperature	-40°C to +70°C
Wind Load @ 150km / hr	N/lbf Frontal: 479/107.7 Lateral: 744/167.3 Rear: 562/126.3

CONNECTOR LAYOUT:

