

Date	Prepared by	Approved by	Document nos	Rev
29 May 2023	Ray Ling	Pavel	MBA-442-C4H4L4-001	0

INSTRUCTION MANUAL MS-MBA-4.4.2-C4-H4-L4

TABLE OF CONTENTS:

1.00 BEAMS & CONNECTORS:

- 1.10 Plan View Resultant Beam Layout
- 1.20 Ports Table
- 1.30 Connector Detail
- 1.40 Connector Layout

2.00 PATTERN DIAGRAM

- 2.10 CB Horizontal Pattern
- 2.20 CB Vertical Pattern
- 2.30 HB Horizontal Pattern
- 2.40 HB Vertical Pattern
- 2.50 LB Horizontal Pattern
- 2.60 LB Vertical Pattern

3.00 MANUAL TILT ADJUSTMENT

4.00 BRACKET INSTALLATION

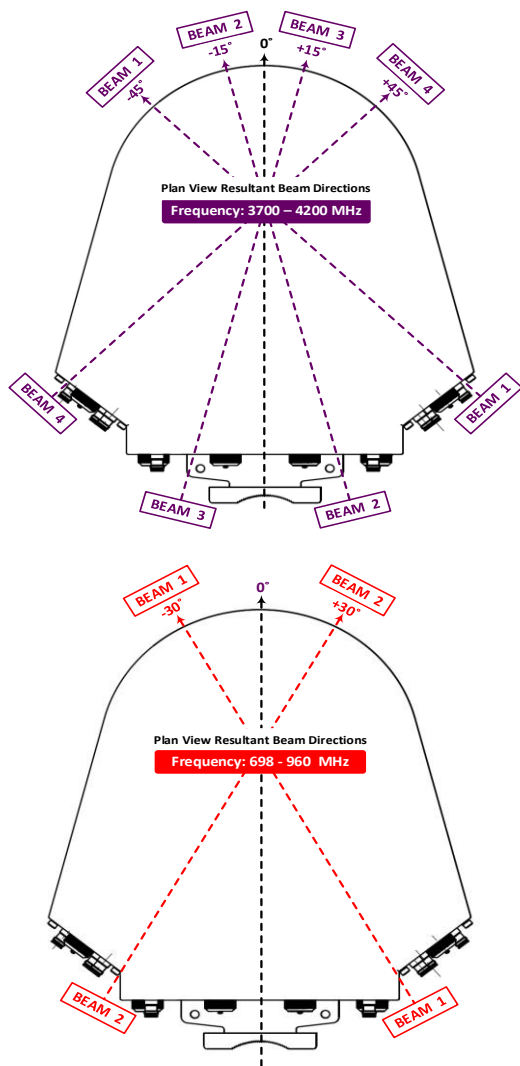
- 4.10 Bolts & Nuts Requirements
 - 4.11 Bolts & Nuts
 - 4.12 Bracket
 - 4.22 M12 Spanner
- 4.20 Tools Requirement
 - 4.21 Adjustable Spanner
- 4.30 Bracket Spacing & Installation Sample

Revision History:

Date	Description	Revised by	Revision nos.

1.00 BEAMS & CONNECTORS:

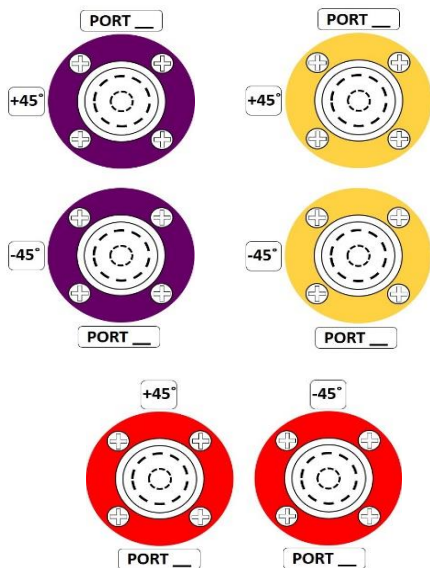
1.10 Plan View Resultant Beam Layout



1.20 Ports Table

C Band	BEAM 4	BEAM 3	BEAM 2	BEAM 1
	Port 15 (+45°)	Port 11 (+45°)	Port 7 (+45°)	Port 3 (+45°)
	Port 16 (-45°)	Port 12 (-45°)	Port 8 (-45°)	Port 4 (-45°)
	Port 13 (+45°)	Port 9 (+45°)	Port 5 (+45°)	Port 1 (+45°)
	Port 14 (-45°)	Port 10 (-45°)	Port 6 (-45°)	Port 2 (-45°)
	BEAM 4	BEAM 3	BEAM 2	BEAM 1
Port 31 (+45°)	Port 27 (+45°)	Port 23 (+45°)	Port 19 (+45°)	
Port 32 (-45°)	Port 28 (-45°)	Port 24 (-45°)	Port 20 (-45°)	
L Band	BEAM 2		BEAM 1	
	Port 39 (+45°)		Port 35 (+45°)	
	Port 40 (-45°)		Port 36 (-45°)	
	Port 37 (+45°)		Port 33 (+45°)	
Port 38 (-45°)		Port 34 (-45°)		
H Band	BEAM 4	BEAM 3	BEAM 2	BEAM 1
	Port 29 (+45°)	Port 25 (+45°)	Port 21 (+45°)	Port 17 (+45°)
	Port 30 (-45°)	Port 26 (-45°)	Port 22 (-45°)	Port 18 (-45°)
	Port 29 (-45°)	Port 25 (-45°)	Port 21 (-45°)	Port 17 (-45°)

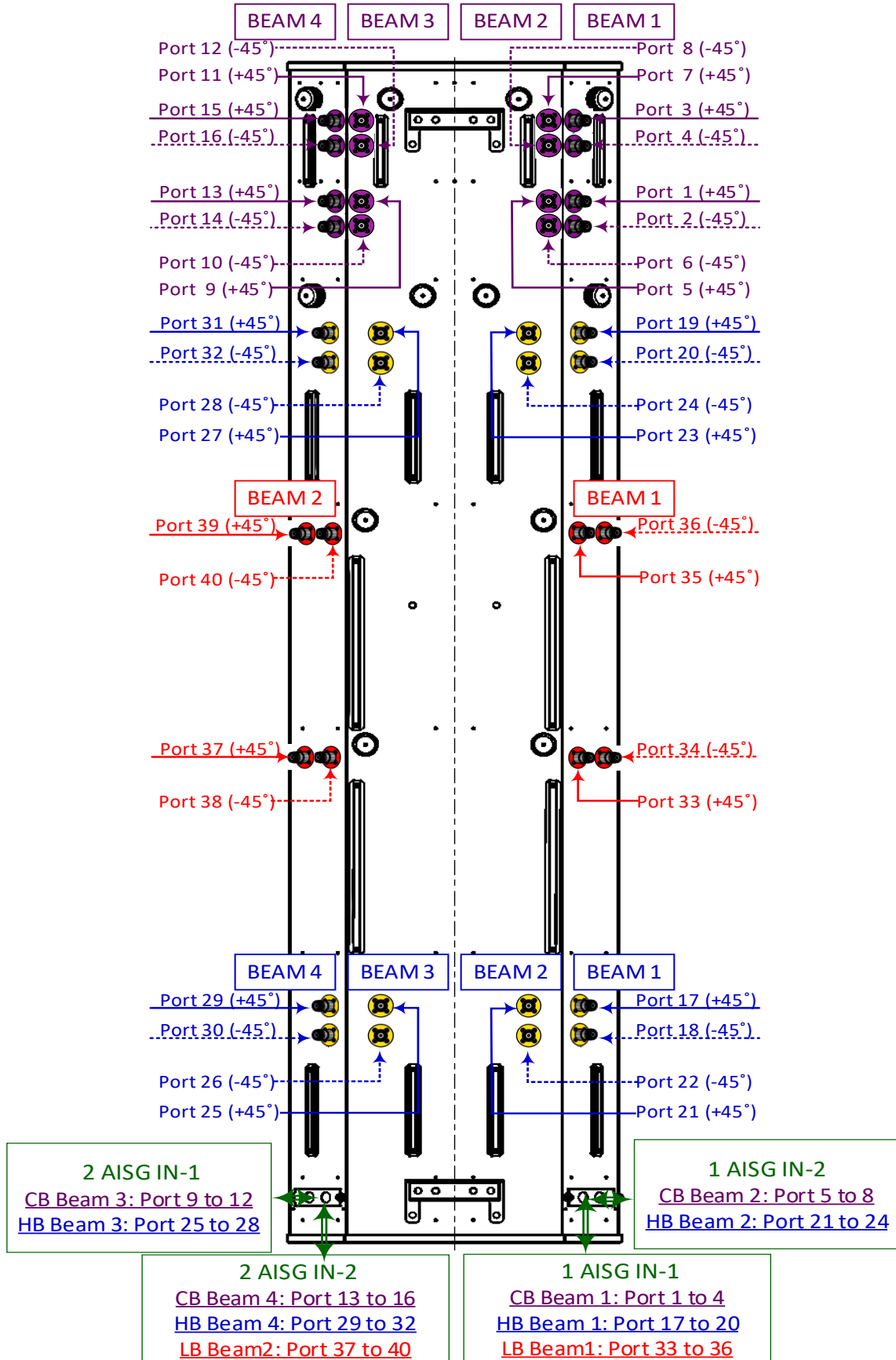
1.30 Connector Detail



1.40 Connector Layout

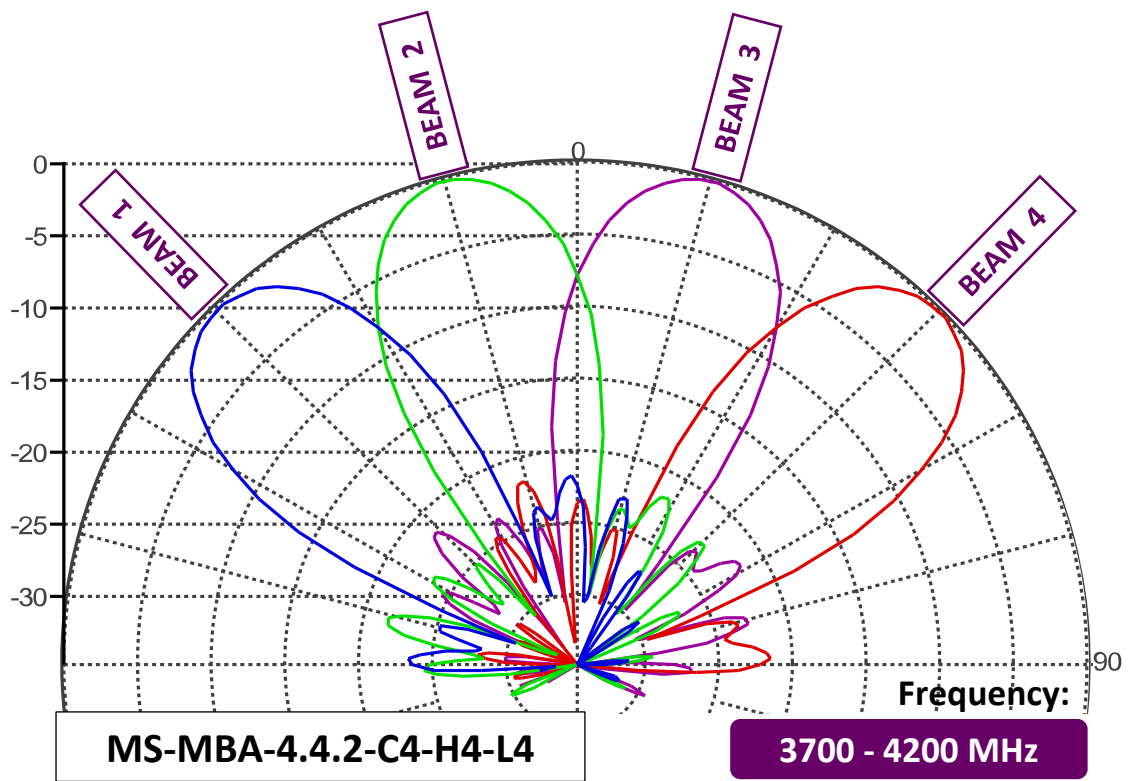
MS-MBA-4.4.2-C4-H4-L4

REAR VIEW CONNECTOR LAYOUT

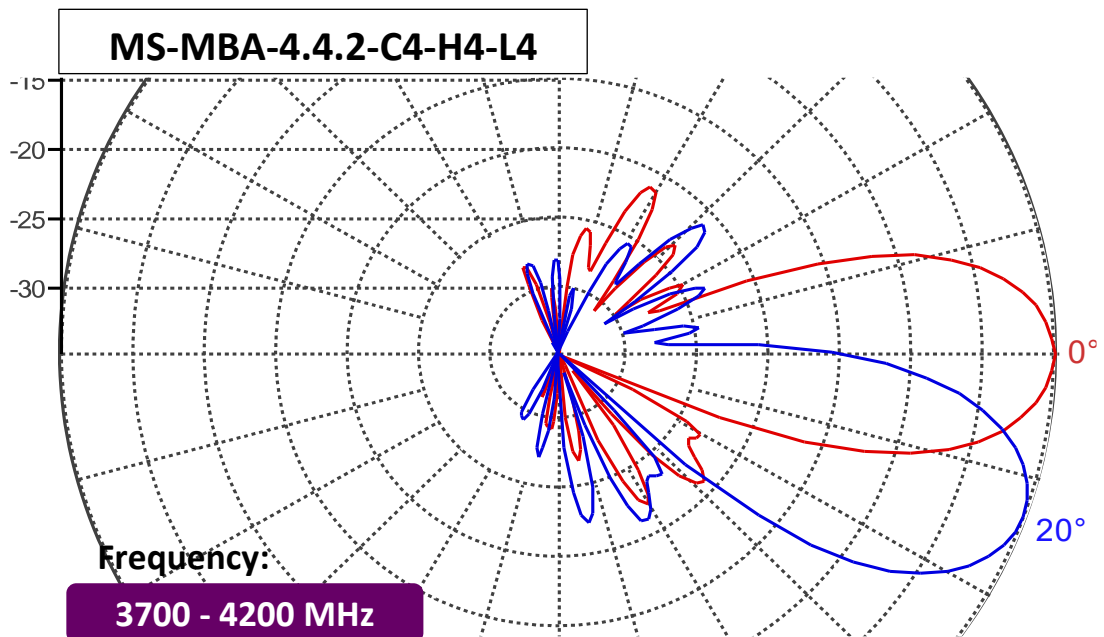


2.00 PATTERN DIAGRAM

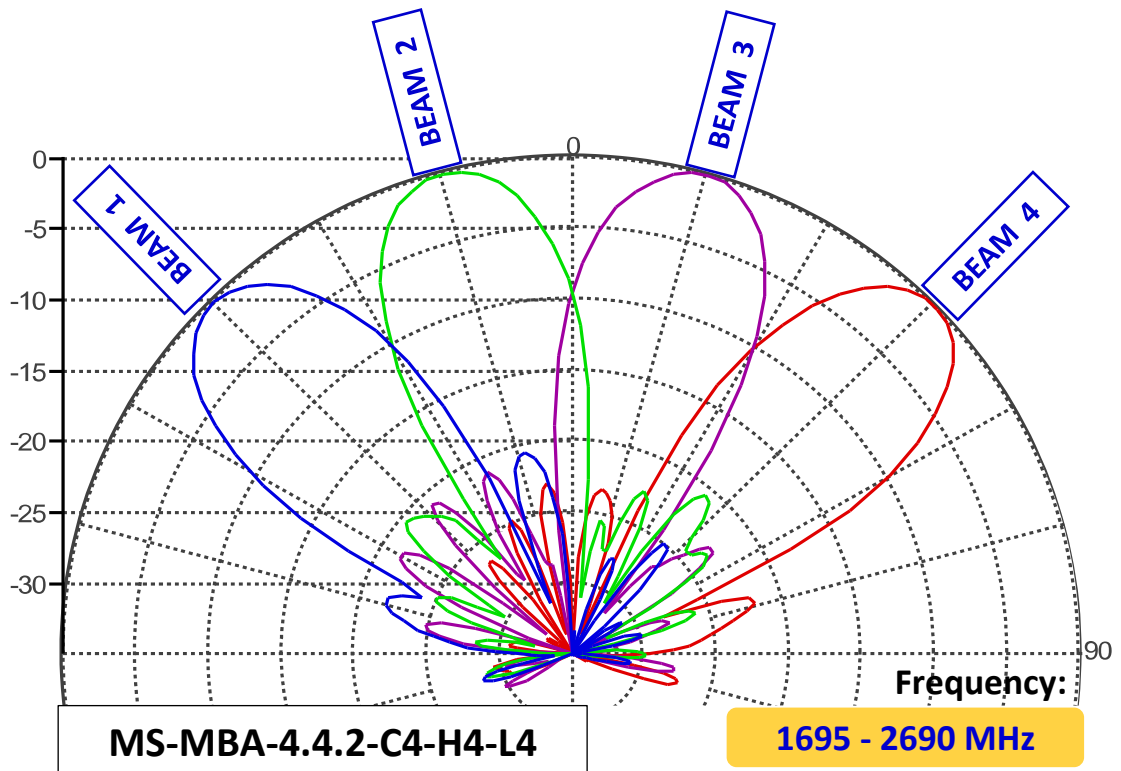
2.10 CB Horizontal Pattern



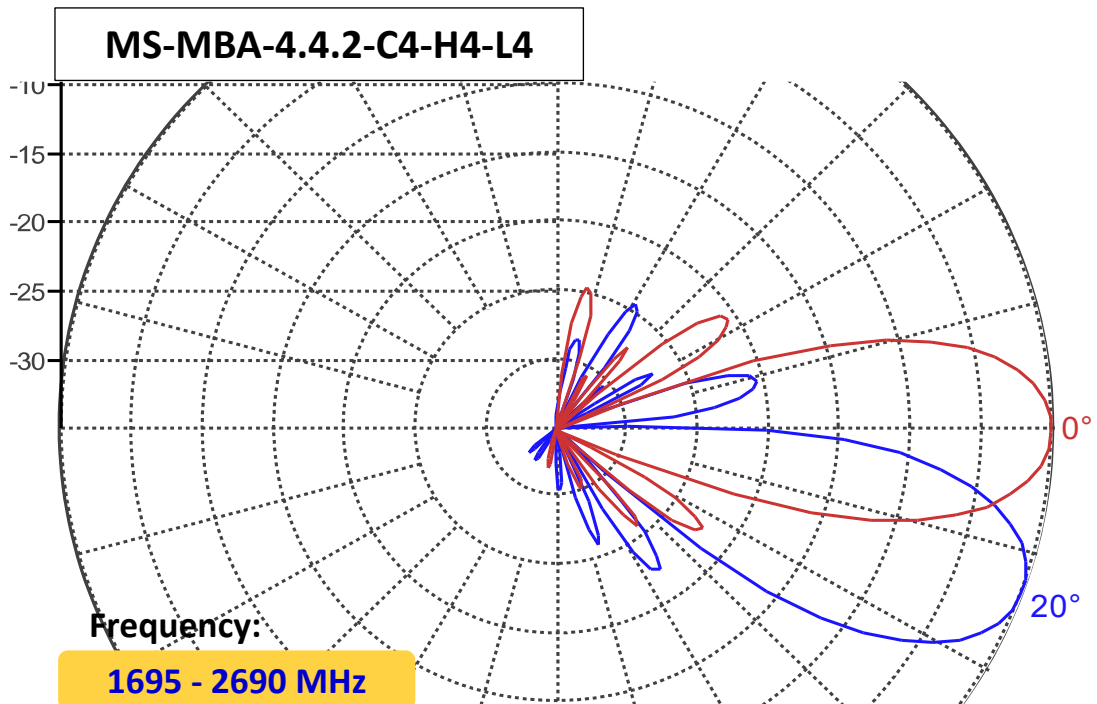
2.20 CB Vertical Pattern



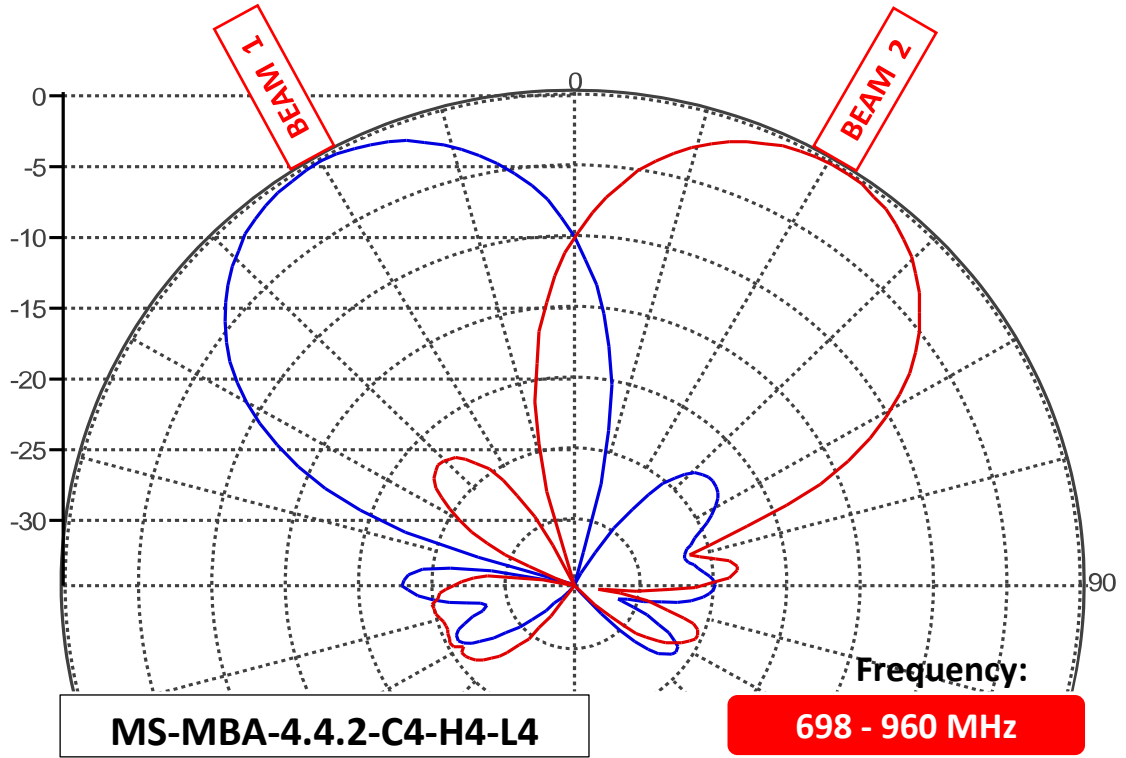
2.30 HB Horizontal Pattern



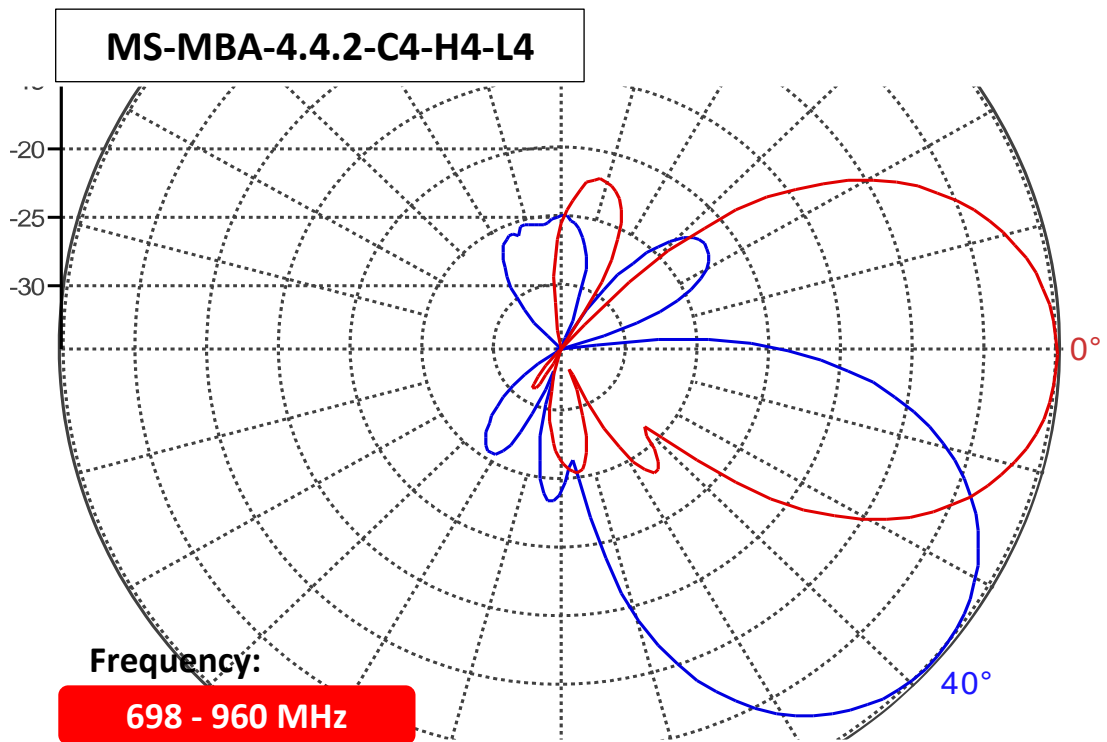
2.40 HB Vertical Pattern



2.50 LB Horizontal Pattern

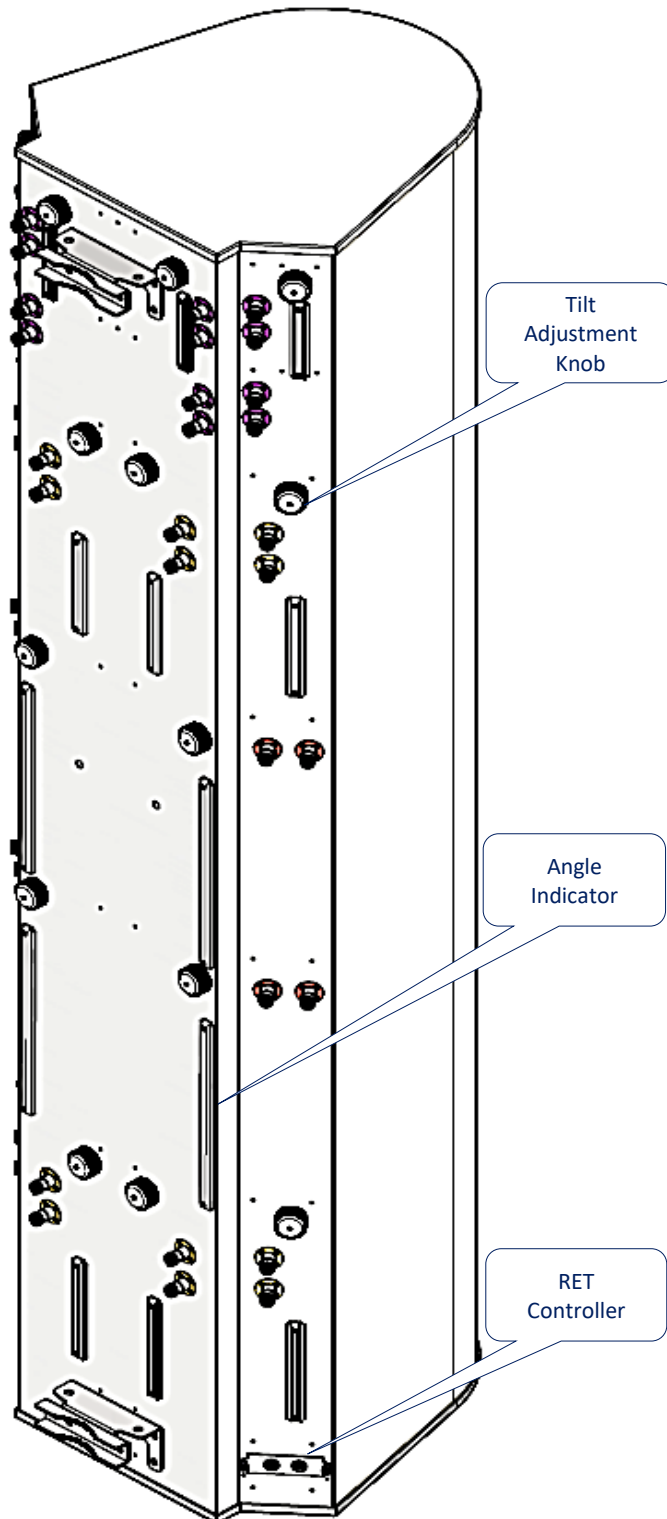


2.60 LB Vertical Pattern



3.00 MANUAL TILT ADJUSTMENT

1	The MBA antenna come in RET mode as default, but if needed can also be manually adjusted. To do so, please unscrew the waterproof cap behind the element whose tilt is to be adjusted.
2	By Default the knob is on engaged mode, pull out the handle for manual tilt adjustment, turn the handle to change the tilt.
3	When done, push the handle back in, screw the waterproof cap back to the position.



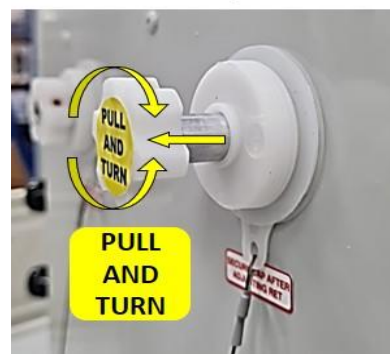
Unscrew/Screw the cap for tilt adjustment process



Engaged with internal RET motor position



Pull handle out to disengaged RET for tilt adjustment



4.00 BRACKET INSTALLATION

4.10 Bolts & Nuts Requirements

Bracket Qty	Bolts		Nuts	
	Size	Qty	Size	Qty
2	M12 x 200mm	4	M12	10

4.11 Bolts & Nuts



4.12 Bracket



4.20 Tools Requirement

4.21 Adjustable Spanner



4.22 M12 Spanner



4.30 Bracket Spacing & Installation Sample

