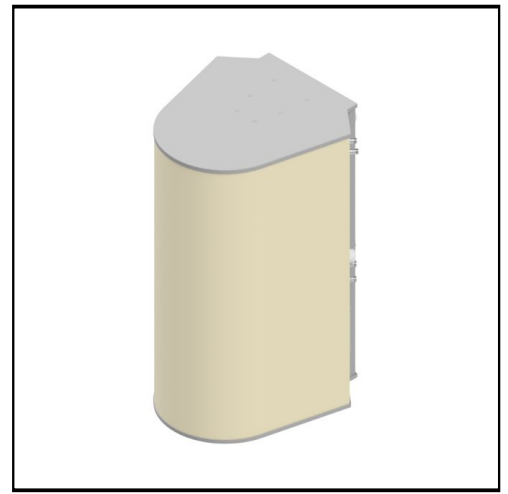


MS-MBA-4.2-H2-T2

Multi-Beam Dual Band Spherical Lens Antenna: 4 independent high-frequency (1695-2690MHz) cross-polarized beams and 2 independent low-frequency (617-896MHz) cross-polarized beams with 2X2 MIMO support. Each beam has independent tilt adjust, for high frequency 0°-20° and for low frequency 0°-40°.

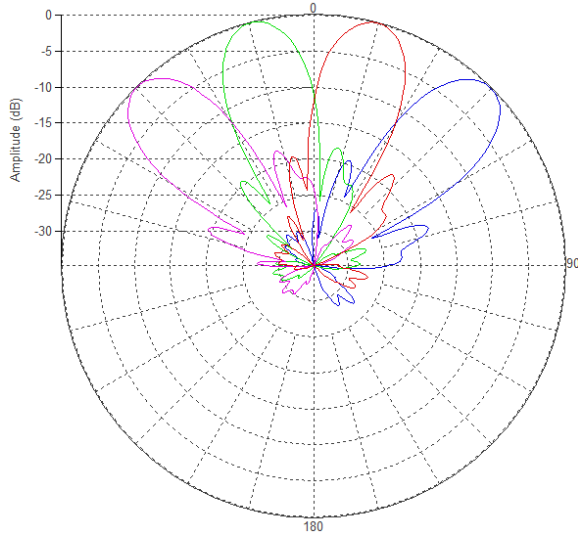
Improved Design Offers;

- 1. Superior Pattern Performance
- 2. Individual RET Capability per Beam

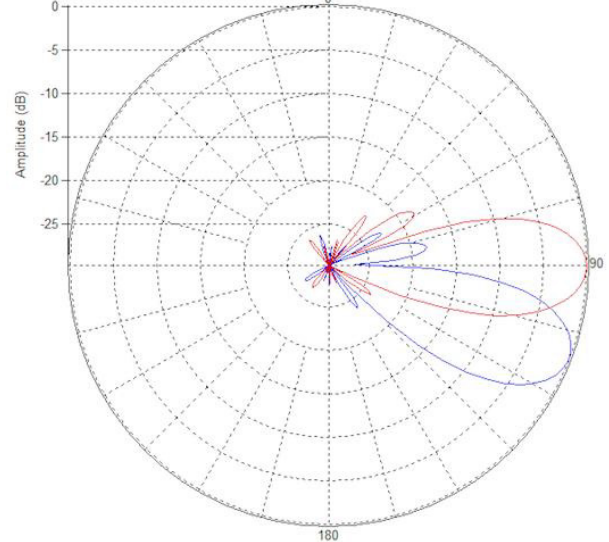


PATTERN RESULTS:

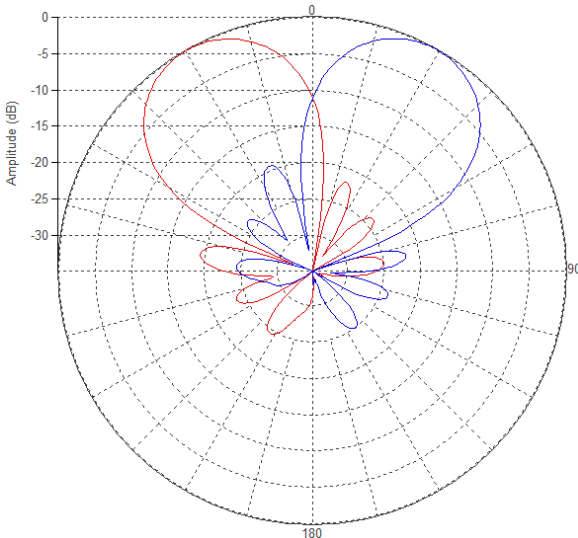
High-band Horizontal Pattern (1.92GHz)



High-band Vertical Pattern (1.92GHz) at tilt 0° and 20°



Low-band Horizontal Pattern (0.75GHz)



Low-band Vertical Pattern (0.75GHz) at tilt 0° and 40°

