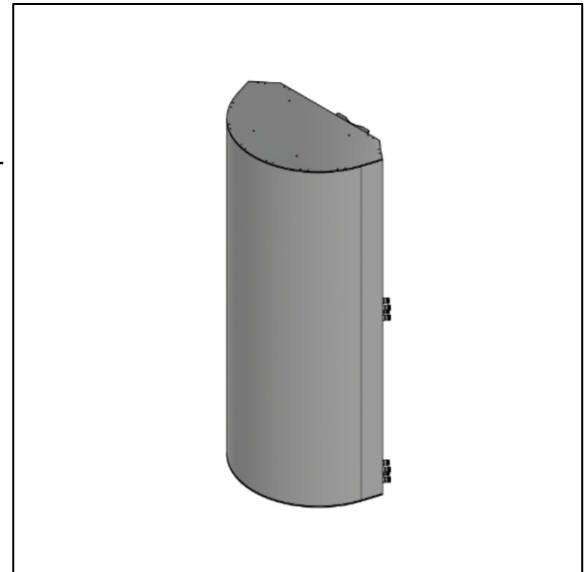


4 BEAMS | 3300 – 4200 MHz | 8T8R

Lens Technology Enabled™ Multi-Beam Base-Station Antenna perfect for multi-sector cell site deployments, utilizes a patented spherical lens design with 4 isolated F-Band (3300–4200MHz) cross-polarized beams. Each beam has 8 ports or 8x8 MIMO. RET available from 0° - 15°.



ELECTRICAL SPECIFICATIONS, BASTA

FREQUENCY BAND, MHZ	3300-4200	3700-4200
GAIN (ALL TILTS/PORTS), DBI	21.5	22.5
VSWR	1.5:1	1.5:1
HORIZONTAL BEAM CENTERS, DEG	-45+/-2; -15+/-2; 15+/-2; 45+/-2	
HORIZONTAL BEAMWIDTH, DEG	18±1	19±1
BEAM CROSS-OVER, DB	7	9
HORIZONTAL SIDELOBES, DB	-17.5	-18
FRONT TO BACK RATIO AT 180°±30°, DB	30	32
CPR AT BORESIGHT, DB	22	23
CPR AT 10DB BEAMWIDTH, DB	14	14
REMOTE ELECTRICAL BEAM TILT, DEG	0 - 15	
VERTICAL BEAMWIDTH, DEG	7±0.7	6±1
USLS, BEAMPEAK TO 20° ABOVE BEAMPEAK, DB	17	16
ISOLATION PORT TO PORT - POLARIZATION, DB	28	30
ISOLATION PORT TO PORT - BEAM, DB	26	26
PIM, 3RD ORDER, 2X20W, DBC	-153	
MAX. POWER PER PORT, W	150 (at 40°C ambient temperature)	

ELECTRICAL SPECIFICATIONS

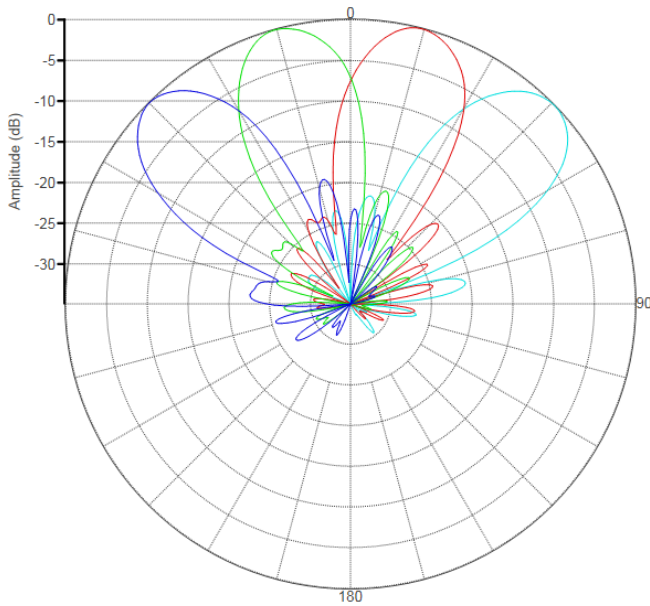
IMPEDANCE	50 Ohm
OPERATING FREQUENCY BAND	3000-4200MHz
POLARIZATION	±450
NUMBER OF BEAMS	4
NUMBER OF PORTS PER BEAM	8
CONNECTOR QUANTITY AND TYPE	32 x 4.3-10 female
TOTAL POWER, MAX	2000W at 40°C

TECHNICAL SPECIFICATIONS

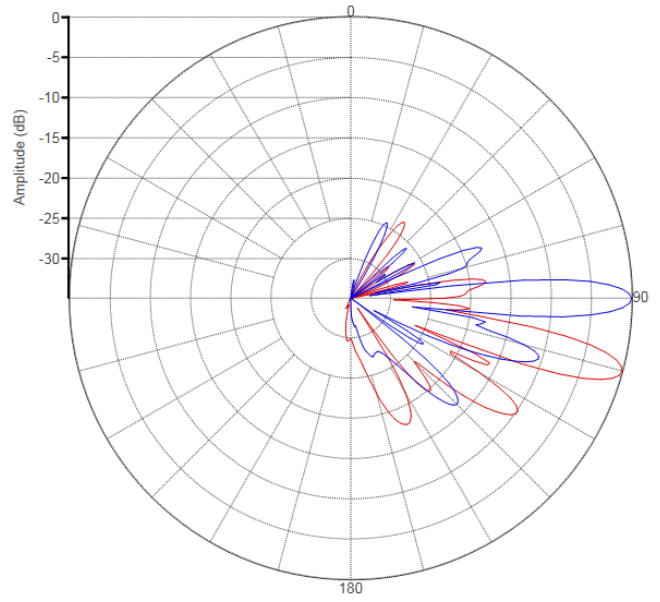
FREQUENCY	3300 – 4200 MHZ
GAIN	22dBi
VSWR	<1.5:1
POLARIZATION	Dual Slant ±45°
HORIZONTAL COVERAGE	120°
HORIZONTAL BEAMWIDTH (10DB LEVEL)	34°
HORIZONTAL BEAMWIDTH (3DB LEVEL)	19°
VERTICAL BEAMWIDTH (3DB LEVEL)	6.5°
BEAM CROSS-OVER	8dB typical
TOTAL NUMBER OF BEAMS	4
NUMBER OF PORTS PER BEAM	8
NUMBER OF PORTS TOTAL	32
RET	0°-15°
UPPER SIDE LOBE SUPPRESSION	16dB
AZIMUTH SIDELobe LEVEL	-18dB
FRONT TO BACK RATIO	28dB
ISOLATION PORT TO PORT - POLARIZATION	28dB
ISOLATION PORT TO PORT - BEAM	28dB
POWER RATING	150W per port
INTERMODULATION	<-153dBc
IMPEDANCE	50 ohm
CONNECTOR QUANTITY AND TYPE	32 x 4.3-10 female

PATTERN RESULTS

Horizontal Pattern (3.7GHz)



Vertical Pattern at 0° and 15° (3.7GHz)



MECHANICAL SPECIFICATIONS

DIMENSIONS (H X W X D)	153 x 71 x 40 cm 60.2 x 28 x 15.7 inch
ANTENNA WEIGHT	55kg 121.2 lbs
RADOME MATERIAL	Fiber Glass
MOUNTING	Standard pipe mount Compatible pipe diameter: 6.1 – 11.4 cm 2.4 – 4.5 inch

ENVIRONMENTAL RATINGS

HUMIDITY	95% RH @ +30°C
TEMPERATURE	-40°C to +70°C
WIND LOAD @150 KM/HR	TBD