

MATSING[®]

LENS TECHNOLOGY ENABLED

MS-MBA-4-F8A3

Instruction Manual

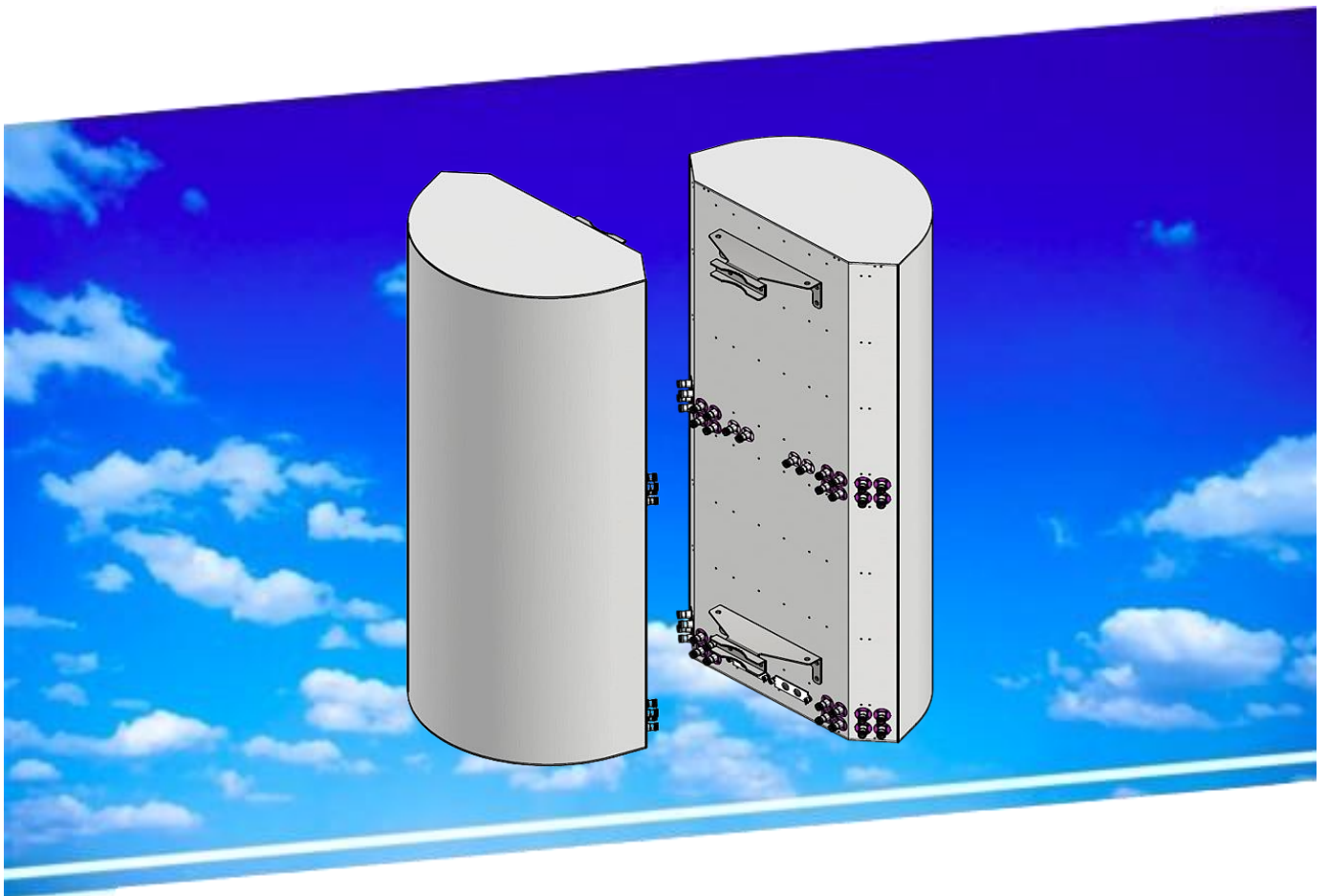


Table Of Contents

1.00 Pattern Diagram

- 1.10 Horizontal pattern
- 1.20 Vertical pattern

2.00 Beams & Connectors

- 2.10 Plan view resultant beam layout
- 2.20 Connector port table
- 2.30 Connector detail
- 2.40 Connector layout

3.00 RET operations and information

- 3.10 RET model and serial nos input
- 3.20 Controller display
 - 3.21 Beam and port numbers display

4.00 Bracket installation

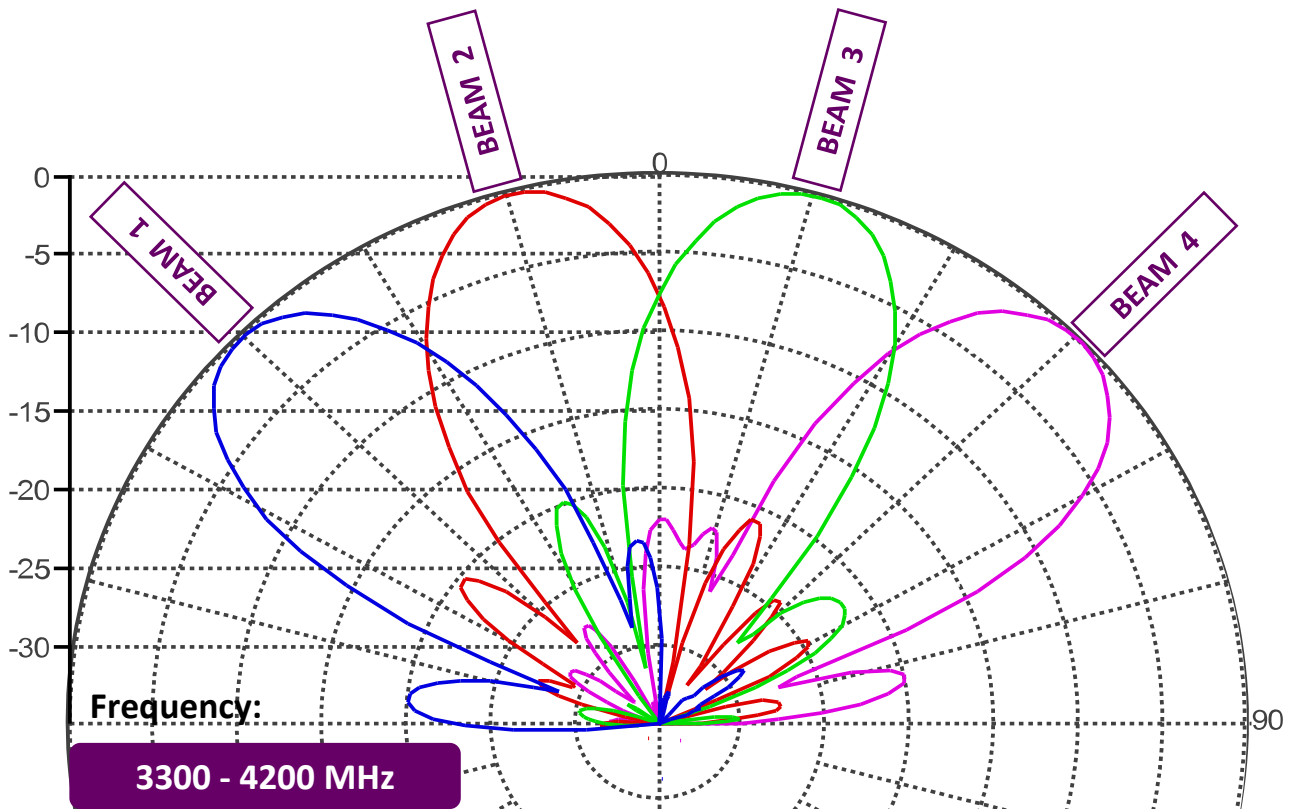
- 4.10 Bolts and nuts / tools
 - 4.11 Bolt and nuts set
 - 4.12 Bracket
- 4.20 Tools requirement
- 4.30 Bracket spacing and installation sample

Revision History:

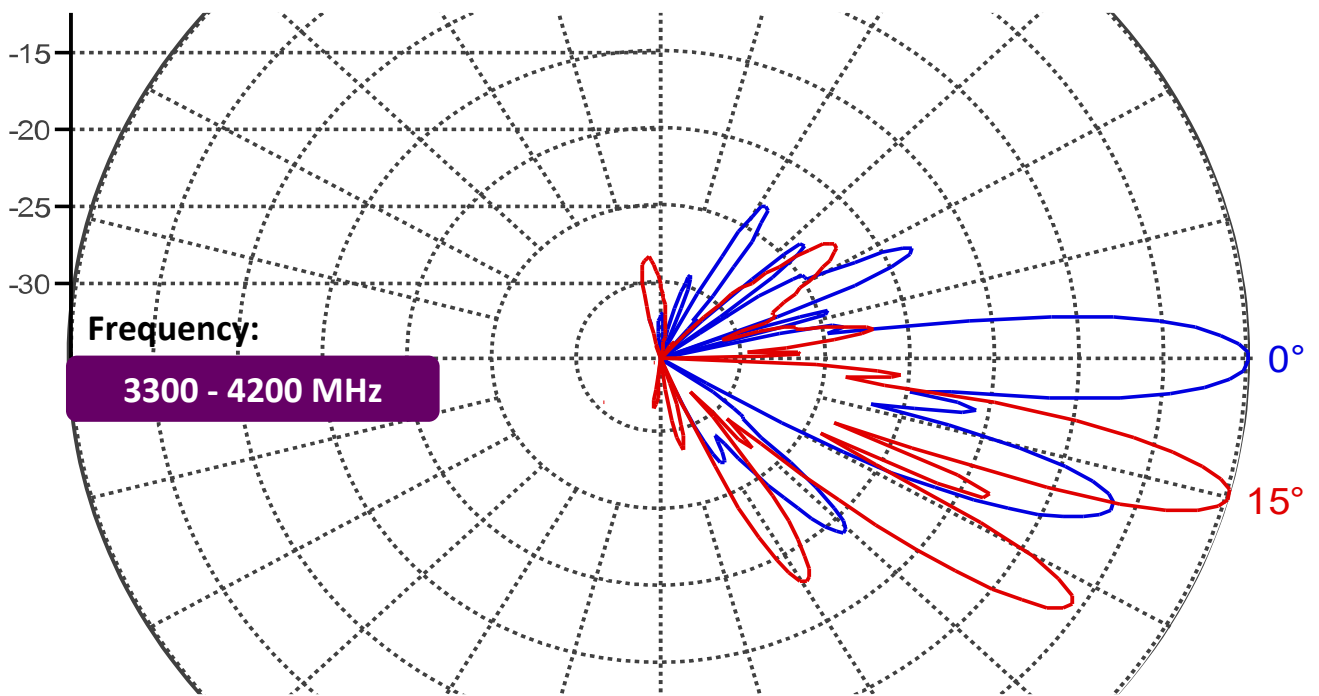
<u>Date</u>	<u>Description</u>	<u>Rev By</u>	<u>Check By</u>	<u>Rev no</u>
31-Mar-2026	Initial Release	RL	Pavel	0

1.00 Pattern Diagram

1.10 Horizontal pattern

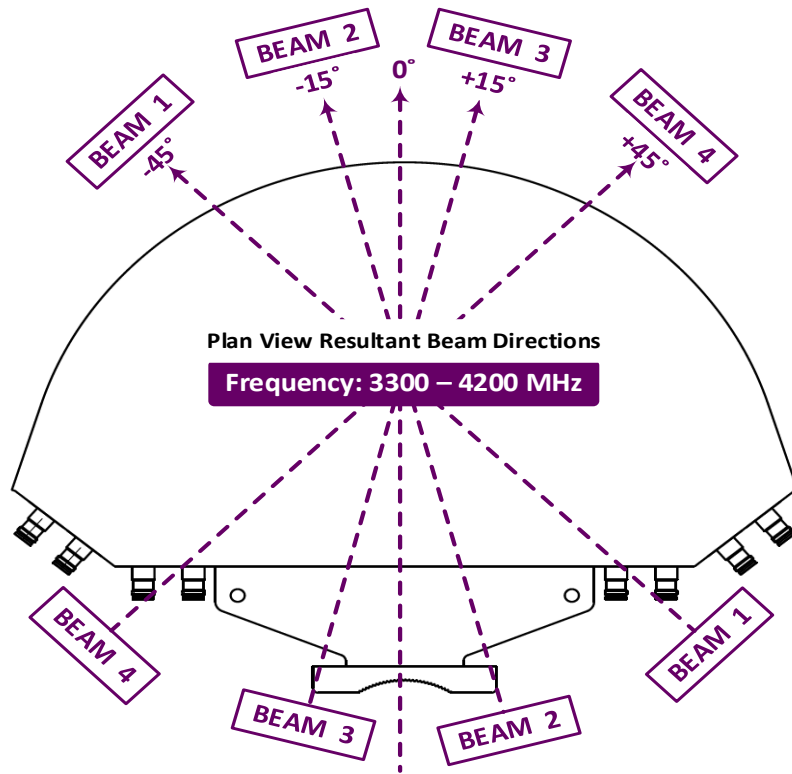


1.20 Vertical pattern



2.00 Beams & Connectors

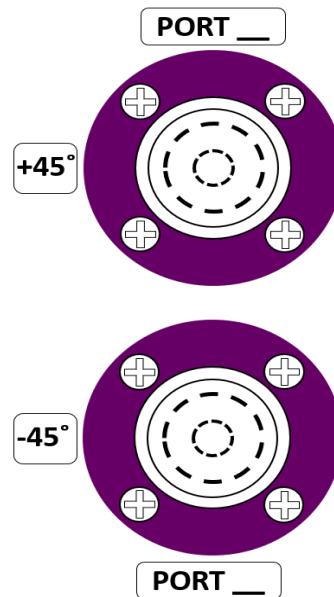
2.10 Plan view resultant beam layout



2.20 Connector port table

BEAM 4	BEAM 3	BEAM 2	BEAM 1
Port 25 (+45°)	Port 17 (+45°)	Port 9 (+45°)	Port 1 (+45°)
Port 26 (-45°)	Port 18 (-45°)	Port 10 (-45°)	Port 2 (-45°)
Port 27 (+45°)	Port 19 (+45°)	Port 11 (+45°)	Port 3 (+45°)
Port 28 (-45°)	Port 20 (-45°)	Port 12 (-45°)	Port 4 (-45°)
Port 29 (+45°)	Port 21 (+45°)	Port 13 (+45°)	Port 5 (+45°)
Port 30 (-45°)	Port 22 (-45°)	Port 14 (-45°)	Port 6 (-45°)
Port 31 (+45°)	Port 23 (+45°)	Port 15 (+45°)	Port 7 (+45°)
Port 32 (-45°)	Port 24 (-45°)	Port 16 (-45°)	Port 8 (-45°)

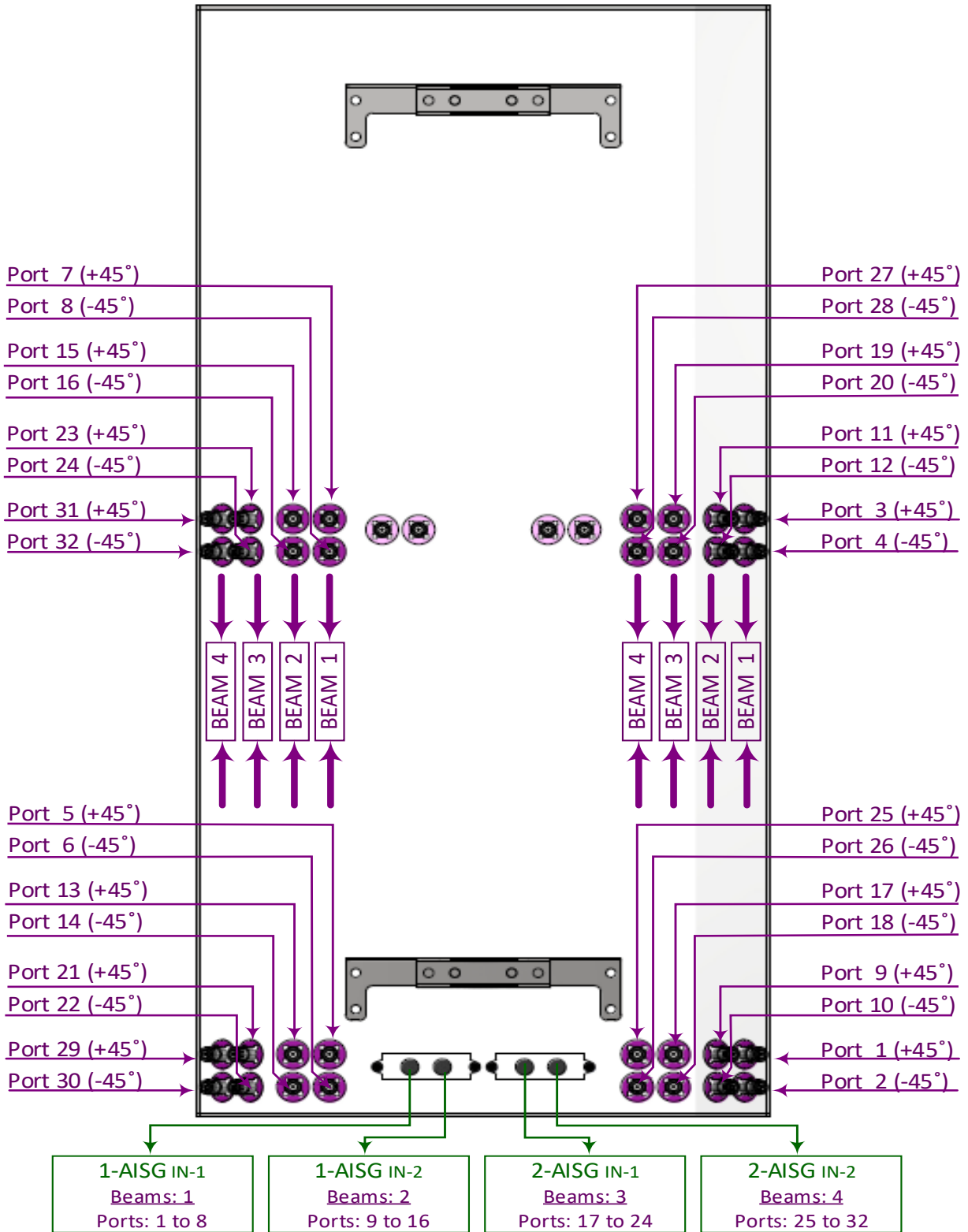
2.30 Connector detail



2.40 Connector layout

MS-MBA-4-F8A3


REAR VIEW CONNECTOR LAYOUT



3.00 RET operations and information

A standard AISG 2.0 compliant cable (not included) is used to connect the MDCU to the AISG interface control. Once connected, use an AISG 2.0 compliant Control software to perform a Sub Unit SCAN to identify the RET Elements.

3.10 RET model and serial nos input



LENS TECHNOLOGY ENABLED

Model No. : MS-MBA-4-F8A3
 Serial No. : MS-MBA-4-F8A3-0001
 Frequency: 3300 – 4200 MHZ

Ret Controller Serial #
 MBA4F8A3000001AMM
 MBA4F8A3000001BMM
 MBA4F8A3000001CMM
 MBA4F8A3000001DMM

17 digits

MBA4F8A3000001AMM
 MBA4F8A3000001BMM
 MBA4F8A3000001CMM
 MBA4F8A3000001DMM

Model s/nos AISG
 6 digits

Delete or add zero (0) in front if the label s/nos. is more or less than 6 digits

Reminder: If Information Has Been Edited, Remember to Perform "Radio Hard Reset" for Changes to take Place

3.20 Controller display

ALD List												
NO	HDLC	Vendor	Serial Number	Product Number	H/W Version	S/W Version	3GPP	Device	AISG	Connect	Link	
1	1	MS	MBA4F8A3000001AMM	ACS-RMC20	1.00	1.17	6	Multi RET	2	Connect	Link	
2	2	MS	MBA4F8A3000001BMM	ACS-RMC20	1.00	1.17	6	Multi RET	2	Connect	Link	
3	3	MS	MBA4F8A3000001CMM	ACS-RMC20	1.00	1.17	6	Multi RET	2	Connect	Link	
4	4	MS	MBA4F8A3000001DMM	ACS-RMC20	1.00	1.17	6	Multi RET	2	Connect	Link	

3.21 Beam and port numbers display

RET ID : MSMBA4F8A3000001AMM

RET Status and Control

Antenna Information List

NO	Sector ID	Ant Model
1/4	Beam 1 (Ports 1, 2)	MS-MBA-4-F8A3
2/4	Beam 1 (Ports 3, 4)	MS-MBA-4-F8A3
3/4	Beam 1 (Ports 5, 6)	MS-MBA-4-F8A3
4/4	Beam 1 (Ports 7, 8)	MS-MBA-4-F8A3

RET ID : MSMBA4F8A3000001BMM

RET Status and Control

Antenna Information List

NO	Sector ID	Ant Model
1/4	Beam 2 (Ports 9, 10)	MS-MBA-4-F8A3
2/4	Beam 2 (Ports 11, 12)	MS-MBA-4-F8A3
3/4	Beam 2 (Ports 13, 14)	MS-MBA-4-F8A3
4/4	Beam 2 (Ports 15, 16)	MS-MBA-4-F8A3

RET ID : MSMBA4F8A3000001CMM

RET Status and Control

Antenna Information List

NO	Sector ID	Ant Model
1/4	Beam 3 (Ports 17, 18)	MS-MBA-4-F8A3
2/4	Beam 3 (Ports 19, 20)	MS-MBA-4-F8A3
3/4	Beam 3 (Ports 21, 22)	MS-MBA-4-F8A3
4/4	Beam 3 (Ports 23, 24)	MS-MBA-4-F8A3

RET ID : MSMBA4F8A3000001DMM

RET Status and Control

Antenna Information List

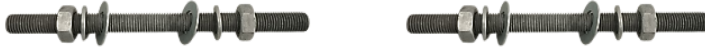
NO	Sector ID	Ant Model
1/4	Beam 4 (Ports 25, 26)	MS-MBA-4-F8A3
2/4	Beam 4 (Ports 27, 28)	MS-MBA-4-F8A3
3/4	Beam 4 (Ports 29, 30)	MS-MBA-4-F8A3
4/4	Beam 4 (Ports 31, 32)	MS-MBA-4-F8A3

4.00 Bracket installation

4.10 Bolts and nuts / tools

Bracket	Mounting Bolts		Nuts	
	Qty	Size	Qty	Size
2	M12x200mm	4	M12	8

4.11 Bolt and nuts set



4.12 Bracket



4.20 Tools requirement

M12 spanner



Adjustable spanner



4.30 Bracket spacing and installation sample

