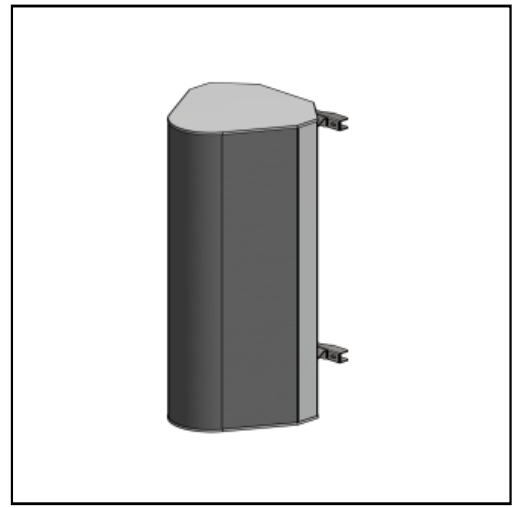


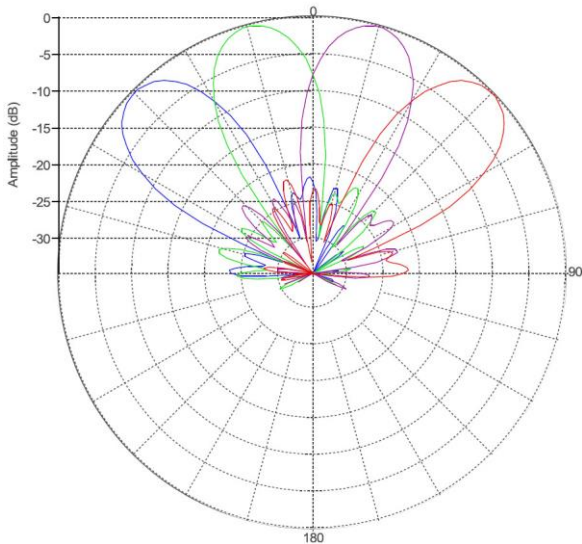
MS-MBA-4-F2

Lens Technology Enabled™ Multi-Beam Base-Station Antenna perfect for multi-sector cell site deployments, utilizes a patented spherical lens design with 4 isolated F-Band (3300–4200MHz) cross-polarized beams. Each Beam has 2 ports or 2X2 MIMO and RET capability from 0° - 20°.

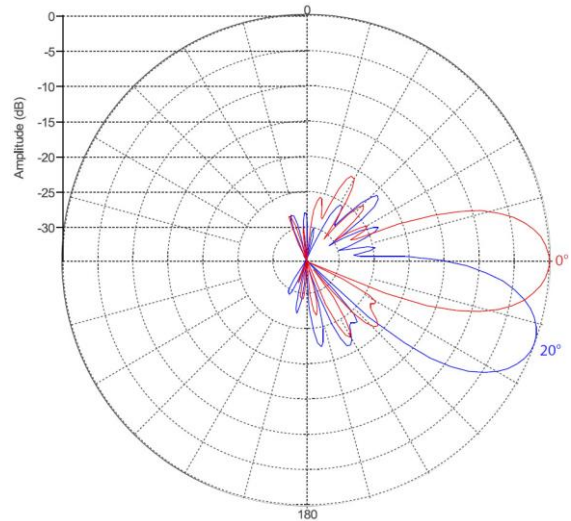


PATTERN RESULTS:

Horizontal Pattern (3.6GHz)



Vertical Pattern at 0° and 20° (3.6 GHz)



TECHNICAL SPECIFICATIONS

Frequency	3300 - 4200 MHz
Gain	20dBi
VSWR	<1.5:1
Polarization	Dual Slant ±45°
Horizontal Coverage	120°
Horizontal Beamwidth (10dB level)	34°
Horizontal Beamwidth (3dB level)	19°
Vertical Beamwidth (10dB level)	34°
Vertical Beamwidth (3dB level)	19°
Beam Cross-over	8dB typical
Total Number of Beams	4
Number of Ports per Beam	2
Number of Ports Total	8
RET	0° to 15°
Upper Side Lobe Suppression	16dB
Azimuth Sidelobe Level	-18dB
Front to Back Ratio	28dB
Isolation Port to Port - Polarization	28dB
Isolation Port to Port - Beam	28dB
Power Rating	150W per port
Intermodulation	<-153dBc
Impedance	50 ohm
Connector Quantity and Type	8 x 4.3-10 female

MECHANICAL DATA

Dimensions (H x W x D)	55 x 36.3 x 46.7 cm 21.6 x 14.3 x 18.4 inch
Antenna Weight	11.9kg/26.2lbs [w/o Bracket] 13.9kg/30.6lbs [w/Bracket]
Radome Material	Fiber Glass
Mounting	Standard pipe mount Compatible pipe diameter: 6.1 – 11.4 cm 2.4 – 4.5 inch

ENVIRONMENTAL RATINGS

Humidity	95% RH @ +30°C
Temperature	-40°C to +70°C
Wind load @ 150km/hr	N/lbf Frontal: 127.3 / 28.6 Lateral: 182 / 41 Rear: 130 / 29

CONNECTOR LAYOUT:

