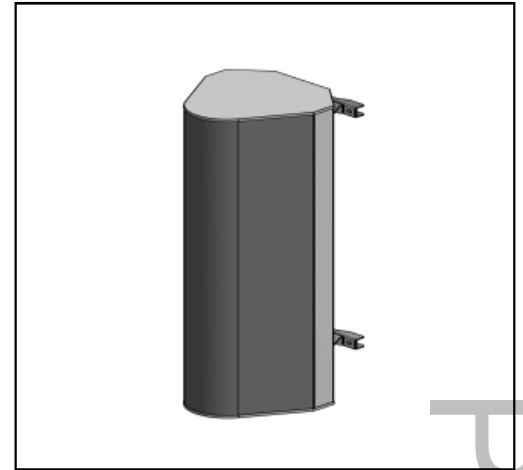


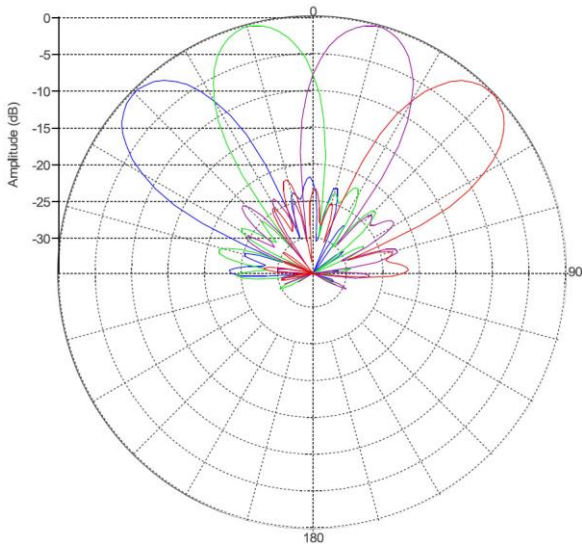
MS-MBA-4-B4

Lens Technology Enabled™ Multi-Beam Base Station Antenna perfect for multi-sector cell site deployments, utilizes a patented spherical lens design with 4 isolated CBRS - Band (3500–3700MHz) cross-polarized beams. Each Beam has 4 ports or 4X4 MIMO. Gain is limited to 18dBi. Tilt is factory set (0° - 20°).

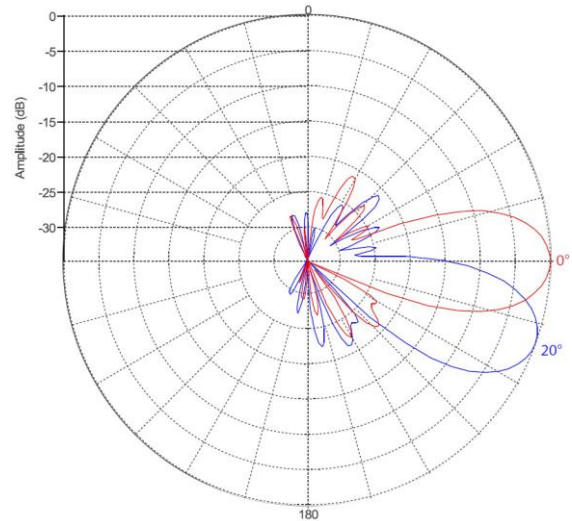


PATTERN RESULTS:

Horizontal Pattern (3.6GHz)



Vertical Pattern at 0° and 20° (3.6 GHz)



PRELIMINARY

TECHNICAL SPECIFICATIONS

Frequency	3500 - 3700 MHz
Gain	18dBi
VSWR	<1.5:1
Polarization	Dual Slant ±45°
Horizontal Coverage	120°
Horizontal Beamwidth (10dB level)	34°
Horizontal Beamwidth (3dB level)	19°
Vertical Beamwidth (10dB level)	34°
Vertical Beamwidth (3dB level)	19°
Beam Cross-over	8dB typical
Total Number of Beams	4
Number of Ports per Beam	4
Number of Ports Total	16
Factory Set Tilt	0° to 20°
Upper Side Lobe Suppression	16dB
Azimuth Sidelobe Level	-18dB
Front to Back Ratio	28dB
Isolation Port to Port - Polarization	28dB
Isolation Port to Port - Beam	28dB
Power Rating	150W per port
Intermodulation	<-153dBc
Impedance	50 ohm
Connector Quantity and Type	16 x 4.3-10 female

MECHANICAL DATA

Dimensions (H x W x D)	50 x 36 x 36 cm 20 x 14 x 14 inch
Antenna Weight	14 kg 31 lbs
Radome Material	Fiber Glass
Mounting	Standard pipe mount Compatible pipe diameter: 6.1 – 11.4 cm 2.4 – 4.5 inch

ENVIRONMENTAL RATINGS

Humidity	95% RH @ +30°C
Temperature	-40°C to +70°C
Wind load @ 150km/hr	N/1bf Frontal: 117/26 Lateral: 168/38