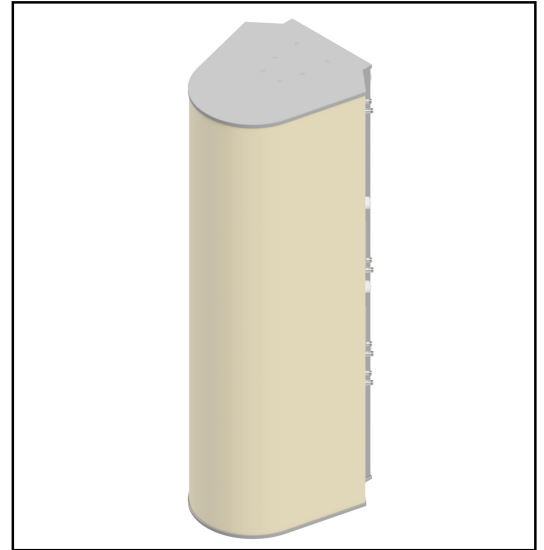


MS-MBA-3.2-H4-T4

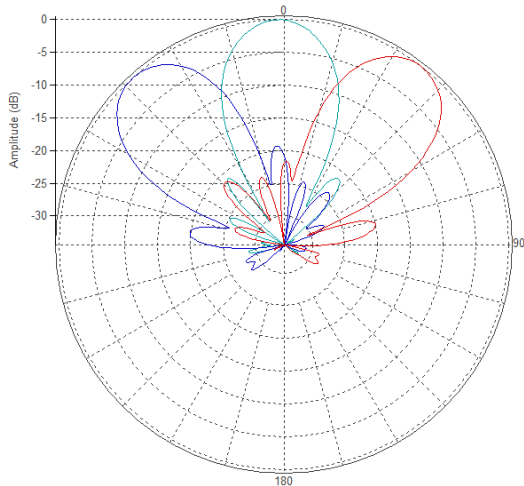
Multi-beam Base-Station Antenna (MBA)

Lens Technology Enabled™ Multi-Beam Base-Station Antenna perfect for 6 to 9 high-band sector LTE cell site deployments and 3 to 6 low-band sector LTE cell site deployments for best CINR results. Utilizes a patented spherical lens design with 3 isolated high-frequency (1695-2690MHz) cross-polarized beams and 2 isolated low-frequency (617-896MHz) cross-polarized beams. Each beam is made of two independent antennas and has 4 ports. There are two independent tilt settings per beam (0-30° for HB and 0-40° for LB) tilt for each pair of cross-polarized elements.

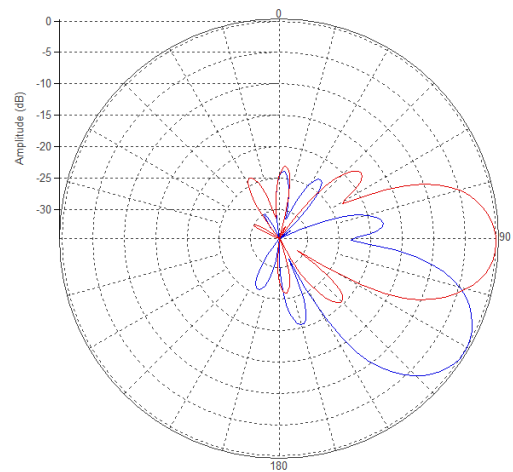


PATTERN RESULTS:

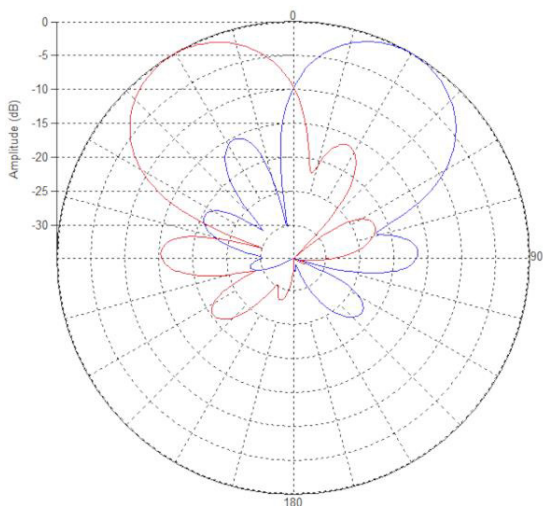
High-Band Horizontal Pattern (1.80GHz)



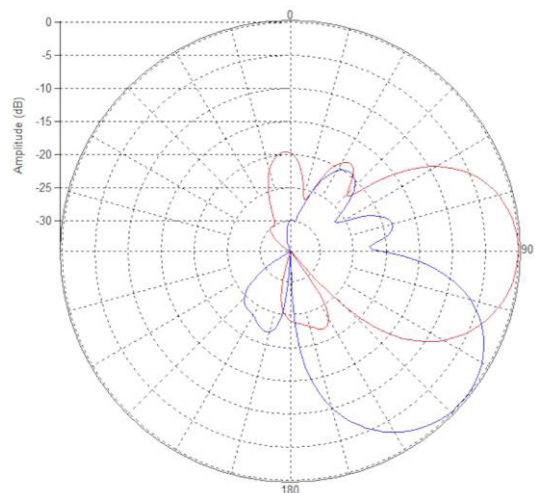
High-Band Vertical pattern 0° tilt and 30° tilt (1.80GHz)



Low-Band Horizontal Pattern (750MHz)



Low-Band Vertical Pattern 0° tilt and 40° tilt (750MHz)



TECHNICAL SPECIFICATIONS PER BEAM

Frequency	1695-2690 MHz	617-896MHz
Gain	17.5dBi	14.0dBi
Polarization	Dual Slant $\pm 45^\circ$	Dual Slant $\pm 45^\circ$
Horizontal Coverage	120°	120°
Horizontal Beamwidth (10dB)	40°	64°
Horizontal Beamwidth (3dB)	23°	36°
Vertical Beamwidth (10dB)	40°	64°
Vertical Beamwidth (3dB)	23°	36°
Beam Cross-over	10dB typical	8.5dB typical
Total Number of Beams	3	2
Number of Ports per Beam	4	4
Number of Ports Total	12	8
Tilt Per Cross-Pol; (Two adjustments per beam)	0° to 30°	0° to 40°
First Sidelobe Level	<-16dB	<-15dB
Front to Back Ratio	>28dB	>25dB
Isolation Port to Port - Polarization	>28dB	>28dB
Isolation Port to Port - Beam	>26dB	>24dB
Power Rating	200W per port	250W per port
Intermodulation	<-153dBc	<-153dBc
Impedance	50 ohm	50 ohm
Connector Quantity and Type	12 4.3-10 female	8 4.3-10 female

MECHANICAL DATA

Dimensions (H x W x D)	182.8 x 61.7 x 72.1cm 72 x 24.3 x 28.4 inch
Antenna Weight	60 kg 132 lbs
Radome Material	Fiber Glass
Mounting	Standard Pipe Mount Compatible pipe diameter: 6.1 – 11.4 cm 2.4 – 4.5 inch

ENVIRONMENTAL RATINGS

Humidity	95% RH @ +30°C
Temperature	-40°C to +70°C
Wind load @ 150km/h	Frontal: 701 N/157 lbf Lateral: 1007 N/226 lbf

CONNECTOR LAYOUT:

