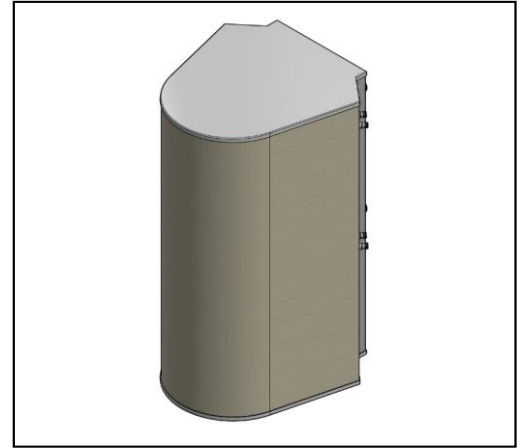


## MS-MBA-3-L4A2

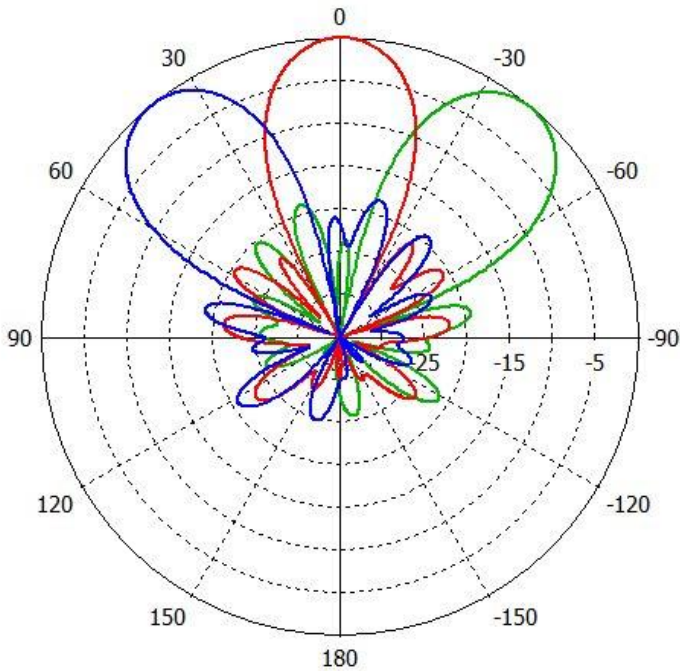
**Lens Technology Enabled™ Multi-Beam Base-Station Antenna perfect for 9 sector LTE cell site deployments, utilizes a patented spherical lens design with 3 isolated low-frequency (698-960MHz) cross-polarized beams. Each beam has 4 cross-polarized ports for supporting 4x4 MIMO.**

**RET available from 0 to 15° for each beam.  
SBT available for each beam.**

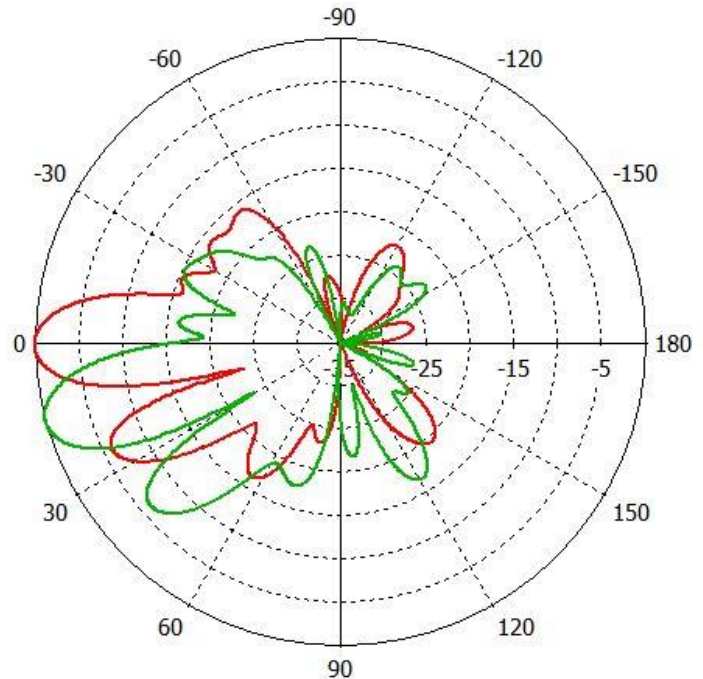


### PATTERN RESULTS:

**Horizontal Pattern (800MHz)**



**Vertical Pattern at 0° tilt and 15° tilt (800MHz)**



### TECHNICAL SPECIFICATIONS

Frequency	698 - 960 MHz
Gain	18dBi
VSWR	<1.5:1
Polarization	Dual Slant ±45°
Horizontal Coverage	120°
Horizontal Beamwidth (10dB) level	40°
Horizontal Beamwidth (3dB) level	24°
Vertical Beamwidth (3dB) level	15°
Beam Cross-over	10dB typical
Total Number of Beams	3
Number of Ports per Beam	4
Number of Ports Total	12
RET Per Cross-Pol	0° to 15°
First Sidelobe level	<-15dB
Front to Back Ratio	>28dB
Isolation Port to Port - Polarization	>28dB
Isolation Port to Port - Beam	>26dB
Power Rating	150W per port
Intermodulation	<-153dBc
Impedance	50 Ohm
Connector Quantity and Type	12 X 4.3-10 female

### MECHANICAL DATA

Dimensions (H x W x D)	244 x 91 x 91 cm 96 x 36 x 36 inch
Antenna Weight	80kg 176lbs
Radome Material	Fiber Glass
Mounting	Standard position pipe mount Compatible pipe diameter: 6.1 – 11.4 cm 2.4 – 4.5 inch

### ENVIRONMENTAL RATINGS

Humidity	95% RH @ +30°C
Temperature	-40°C to +70°C
Wind load	N/lbf Frontal: 1557/350 Lateral: 2124/477.5 Rear: 1982/445.6

### CONNECTOR LAYOUT: