

Date	Prepared by	Approved by	Document nos	Rev
21 Apr 2023	Ray Ling	Pavel	MBA-3-H8A2-001	0

## INSTRUCTION MANUAL MS-MBA-3-H8A2

### TABLE OF CONTENTS:

#### 1.00 BEAMS & CONNECTORS:

- 1.10 Plan View Resultant Beam Layout
- 1.20 Connector Port Table
- 1.30 Connector Detail
- 1.40 Connector Layout

#### 2.00 PATTERN DIAGRAM

- 2.10 H-Band Horizontal Pattern
- 2.20 H-Band Vertical Pattern

#### 3.00 MANUAL TILT ADJUSTMENT

#### 4.00 BRACKET INSTALLATION

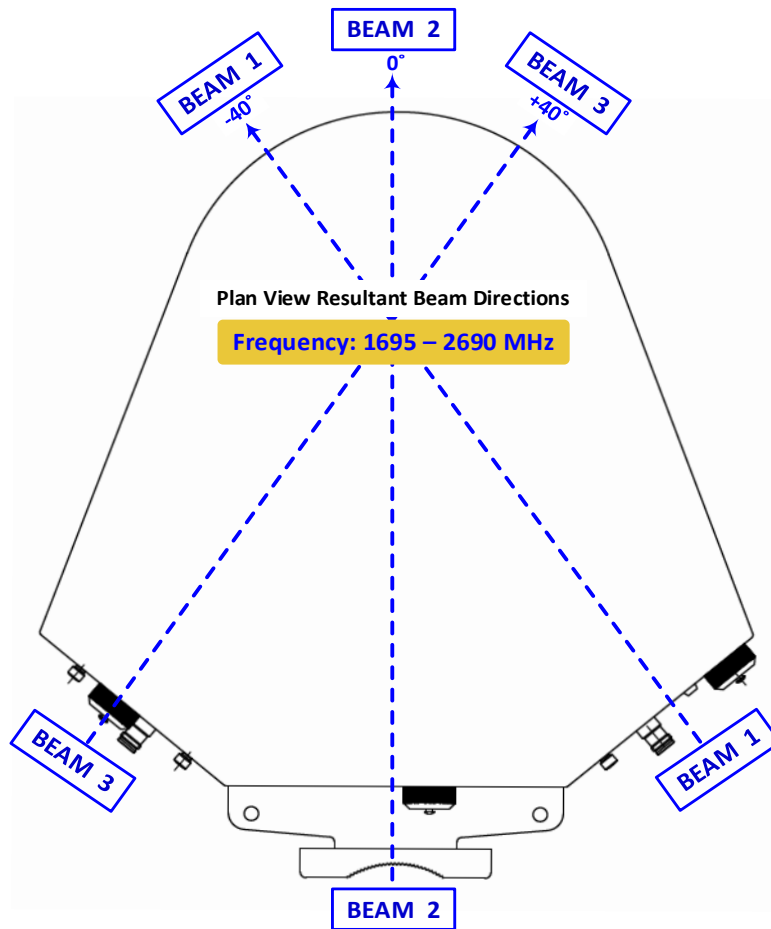
- 4.10 Bolts & Nuts Requirements
  - 4.11 Bolts & Nuts
  - 4.12 Bracket
- 4.20 Tools Requirement
  - 4.21 M12 Spanner
  - 4.22 Adjustable Spanner
- 4.30 Bracket Spacing & Installation Sample

#### Revision History:

Date	Description	Revised by	Revision nos.

## 1.00 BEAMS & CONNECTORS:

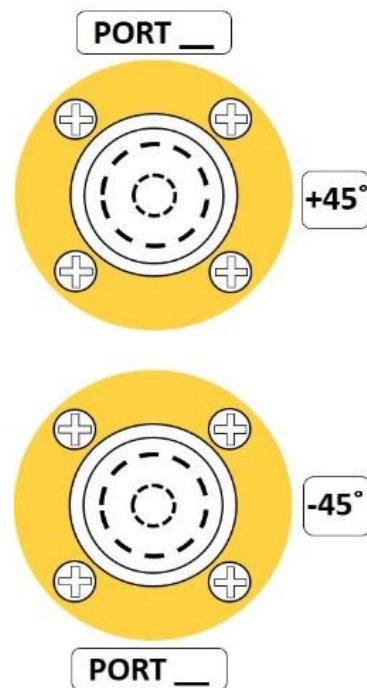
### 1.10 Plan View Resultant Beam Layout



### 1.20 Connector Port Table

BEAM 3	BEAM 2	BEAM 1
Port 23 (+45°)	Port 15 (+45°)	Port 7 (+45°)
Port 24 (-45°)	Port 16 (-45°)	Port 8 (-45°)
Port 21 (+45°)	Port 13 (+45°)	Port 5 (+45°)
Port 22 (-45°)	Port 14 (-45°)	Port 6 (-45°)
Port 19 (+45°)	Port 11 (+45°)	Port 3 (+45°)
Port 20 (-45°)	Port 12 (-45°)	Port 4 (-45°)
Port 17 (+45°)	Port 9 (+45°)	Port 1 (+45°)
Port 18 (-45°)	Port 10 (-45°)	Port 2 (-45°)

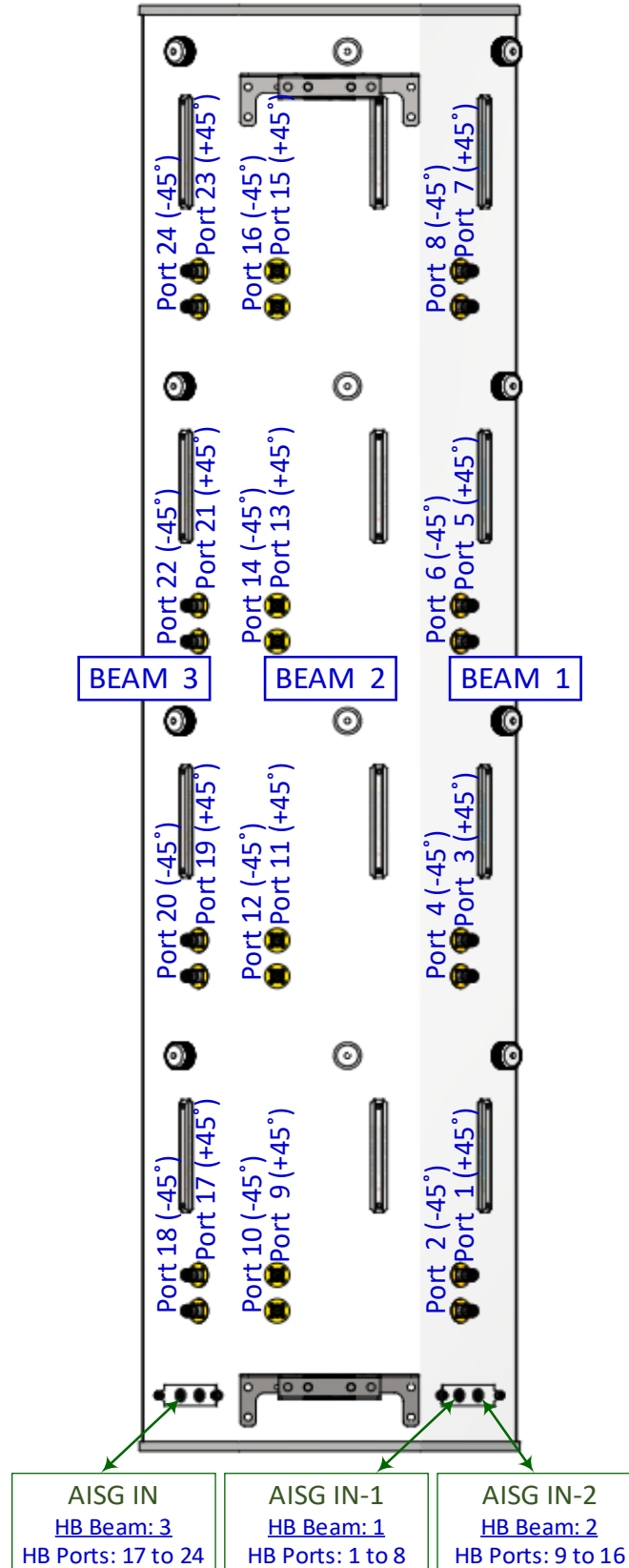
### 1.30 Connector Detail



1.40 Connector Layout

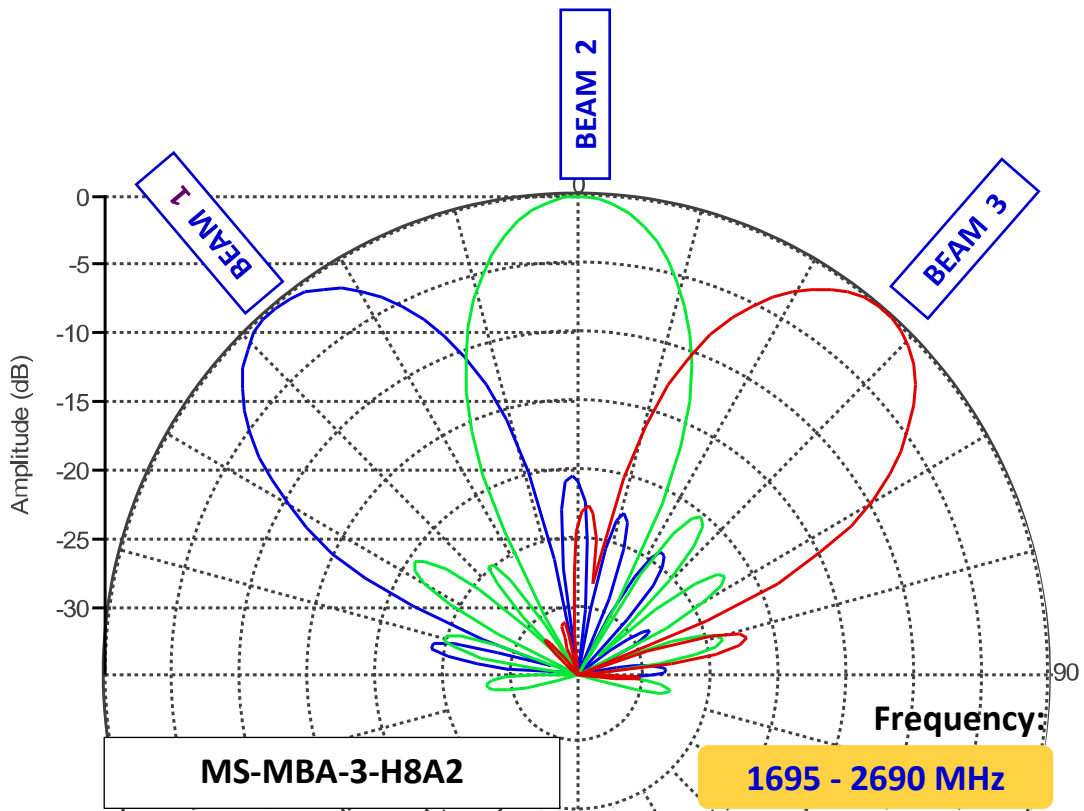
**MS-MBA-3-H8A2**

REAR VIEW CONNECTOR LAYOUT

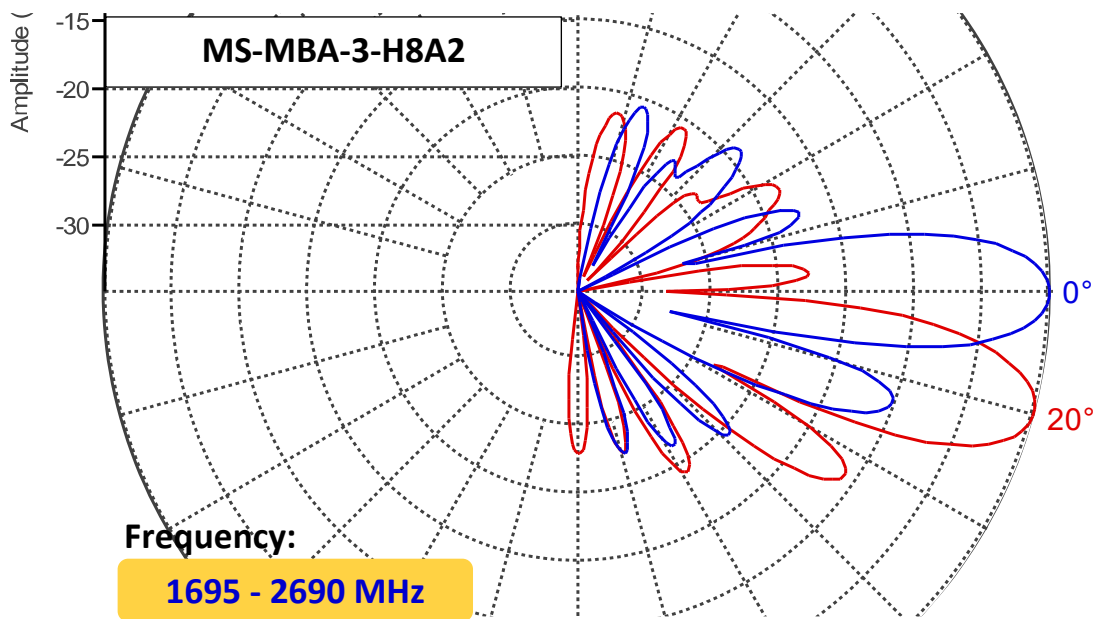


## 2.00 PATTERN DIAGRAM

### 2.10 H-Band Horizontal Pattern

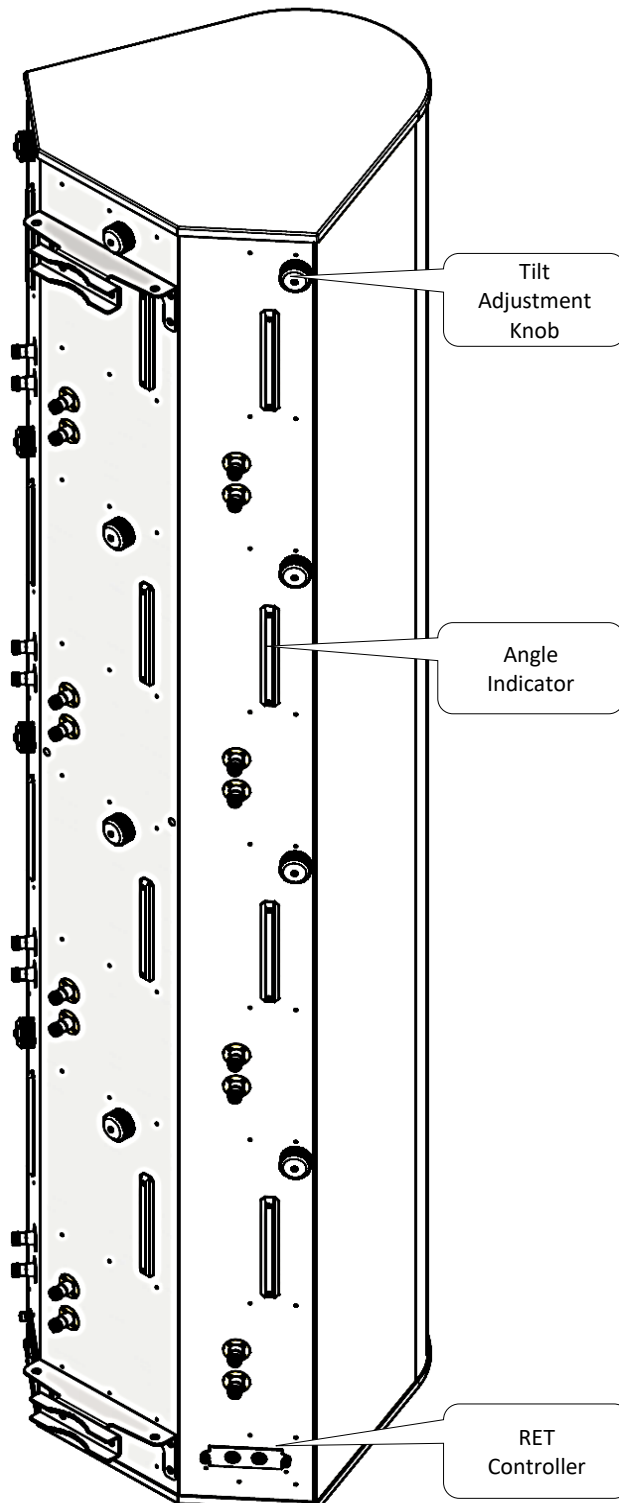


### 2.20 H-Band Vertical Pattern



### 3.00 MANUAL TILT ADJUSTMENT

1	The MBA antenna come in RET mode as default, but if needed can also be manually adjusted. To do so, please unscrew the waterproof cap behind the element whose tilt is to be adjusted.
2	By Default the knob is on engaged mode, pull out the handle for manual tilt adjustment, turn the handle to change the tilt.
3	When done, push the handle back in, screw the waterproof cap back to the position.



Unscrew/Screw the cap for tilt adjustment process



Engaged with internal RET motor position



Pull handle out to disengaged RET for tilt adjustment



## 4.00 BRACKET INSTALLATION

### 4.10 Bolts & Nuts Requirements

Bolts Size	Bolts Qty	Nut Size	Nut Qty	Bracket Qty
M12 x 200mm	4	M12	10	2

### 4.11 Bolts & Nuts



### 4.12 Bracket



### 4.20 Tools Requirement

#### 4.21 M12 Spanner



#### 4.22 Adjustable Spanner



### 4.30 Bracket Spacing & Installation Sample

