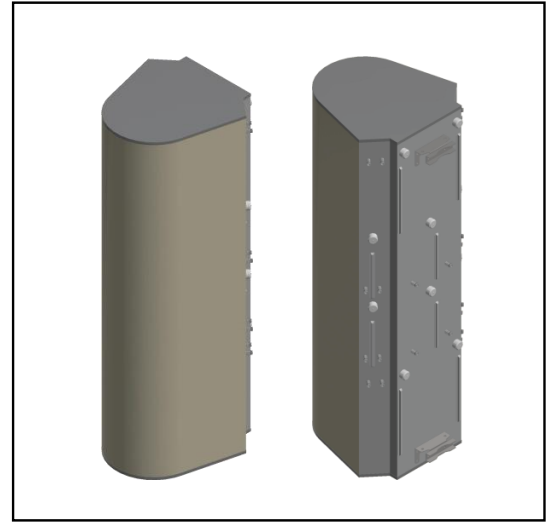


MS-MBA-2-L4A2

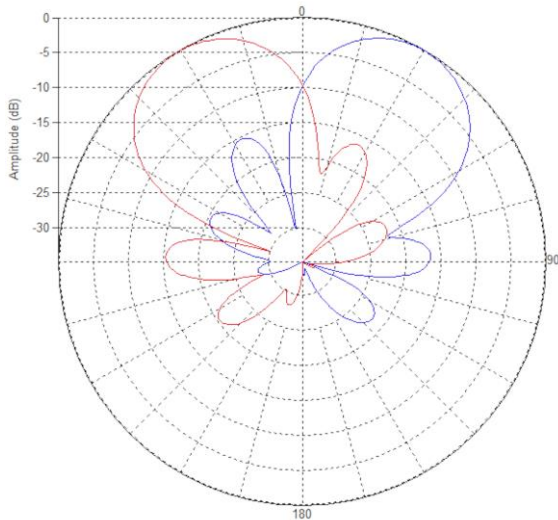
Multi-beam Base-Station Antenna (MBA)

Lens Technology Enabled™ Multi-Beam Base-Station Antenna perfect for 2 low-band sectors, LTE cell site deployment for best SINR results. Utilizes a patented spherical lens design with 2 isolated low-frequency (698-960MHz) cross-polarized beams. Each beam is made of two independent antennas and has 4 ports.

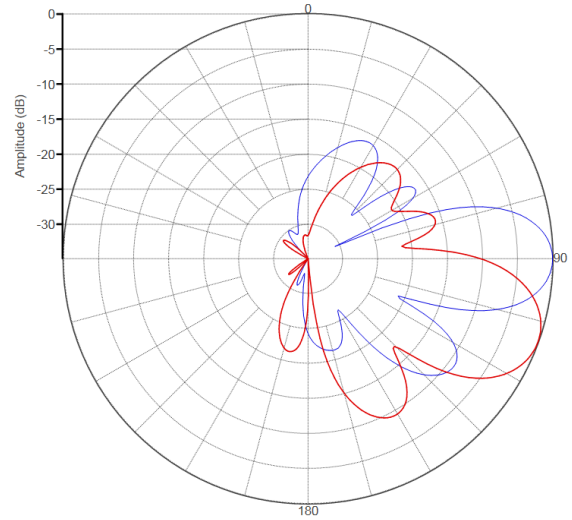


PATTERN RESULTS:

Horizontal Pattern (750MHz)



Vertical Pattern 0° tilt and 20° tilt (750MHz)



TECHNICAL SPECIFICATIONS

Frequency	698-960MHz
Gain	15dBi
VSWR	<1.5:1
Polarization	Dual Slant ±45°
Horizontal Coverage	120°
Horizontal Beamwidth (10dB level)	60°
Horizontal Beamwidth (3dB level)	34°
Vertical Beamwidth (10dB level)	34°
Vertical Beamwidth (3dB level)	20°
Beam Cross-over	10dB typical
Total Number of Beams	2
Number of Ports per Beam	4
Number of Ports Total	8
Tilt Per Cross-Pol	0° to 20°
First Sidelobe level	<-15dB
Front to Back Ratio	>28dB
Isolation Port to Port - Polarization	>28dB
Isolation Port to Port - Beam	>26dB
Power Rating	150W per port
Intermodulation	<-153dBc
Impedance	50 ohm
Connector Quantity and Type	8 x 4.3-10 female

MECHANICAL DATA

Dimensions (H x W x D)	177.8 x 61.7 x 72 cm 70 x 24.3 x 28.4 inch
Antenna Weight	52.8kg/116.4lbs [w/o Bracket] 54.9kg/121lbs [w/Bracket]
Radome Material	Fiber Glass
Mounting	Standard pipe mount Compatible pipe diameter: 6.1 – 11.4 cm 2.4 – 4.5 inch

ENVIRONMENTAL RATINGS

Humidity	95% RH @ +30°C
Temperature	-40°C to +70°C
Wind load @ 150 km/hr	N/lbf Frontal: 772/173.6 Lateral: 1199/269.6 Rear: 905/203.5

CONNECTOR LAYOUT:

