

Date	Prepared by	Approved by	Document nos	Rev
15 Apr 2024	Ray Ling	Pavel	LP66F2H2-IM-001	0

## **INSTRUCTION MANUAL MS-LP-6.6-F2-H2**

### **TABLE OF CONTENTS:**

#### **1.00 BEAMS & CONNECTORS:**

- 1.10 Plan view Resultant Beam & Connector Layout
- 1.20 Connector Ports Table
- 1.30 Connector Detail

#### **2.00 PATTERN DIAGRAM**

- 2.10 FB Horizontal Pattern
- 2.20 FB Vertical Pattern
- 2.30 HB Horizontal Pattern
- 2.40 HB Vertical Pattern

#### **3.00 BRACKET INSTALLATION**

- 3.10 Bolts & Nuts Requirements
  - 3.11 Bracket
  - 3.12 Bolts & Nuts
  - 3.13 Adjustable Spanner (x2)
- 3.20 Antenna Dimensions
- 3.30 Installation Sample

#### **Revision History:**

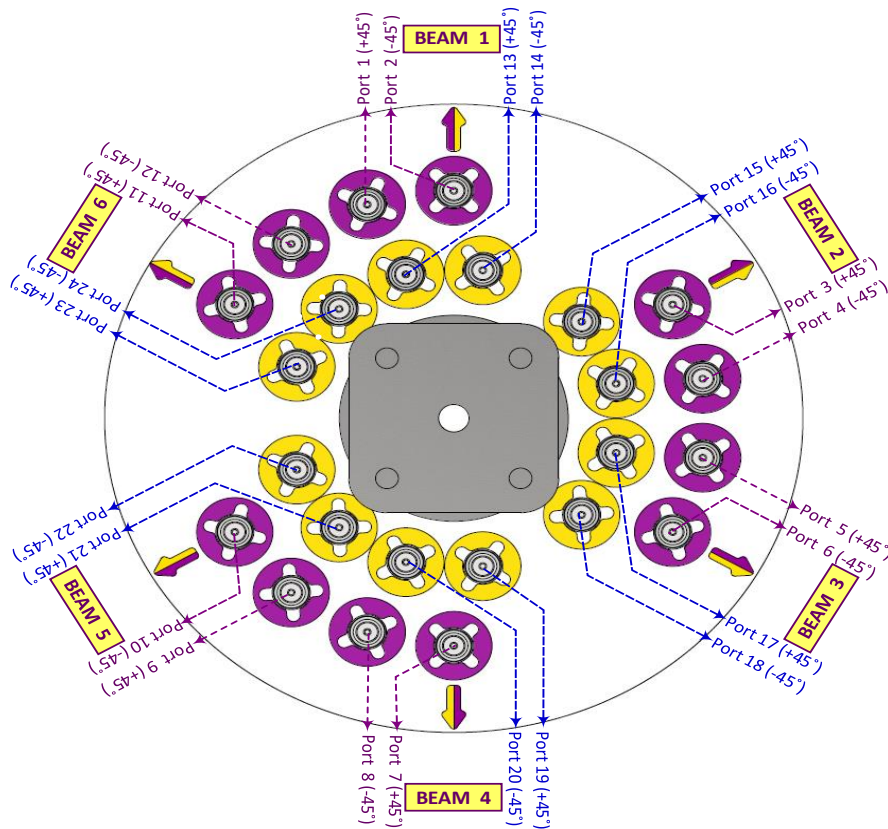
<b>Date</b>	<b>Description</b>	<b>Revised by</b>	<b>Revision nos.</b>

# 1.00 BEAMS & CONNECTORS:

## 1.10 Plan view Resultant Beam & Connector Layout

**MS-LP-6.6-F2-H2**

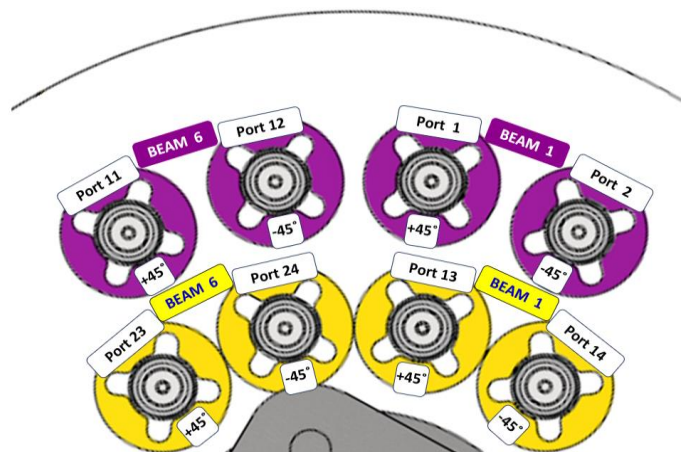
PLAN VIEW CONNECTOR LAYOUT



## 1.20 Connector Ports Table

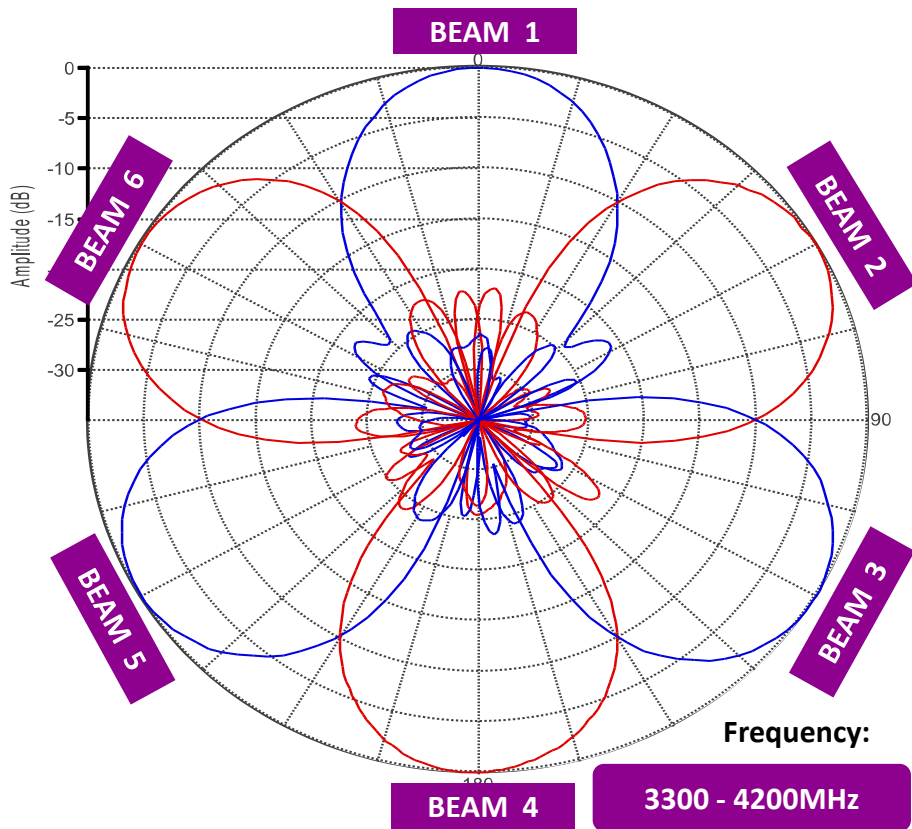
BEAM 1		BEAM 2		BEAM 3		BEAM 4		BEAM 5		BEAM 6	
Port 1 (+45°)	Port 2 (-45°)	Port 3 (+45°)	Port 4 (-45°)	Port 5 (+45°)	Port 6 (-45°)	Port 7 (+45°)	Port 8 (-45°)	Port 9 (+45°)	Port 10 (-45°)	Port 11 (+45°)	Port 12 (-45°)
BEAM 1		BEAM 2		BEAM 3		BEAM 4		BEAM 5		BEAM 6	
Port 13 (+45°)	Port 14 (-45°)	Port 15 (+45°)	Port 16 (-45°)	Port 17 (+45°)	Port 18 (-45°)	Port 19 (+45°)	Port 20 (-45°)	Port 21 (+45°)	Port 22 (-45°)	Port 23 (+45°)	Port 24 (-45°)

## 1.30 Connector Detail

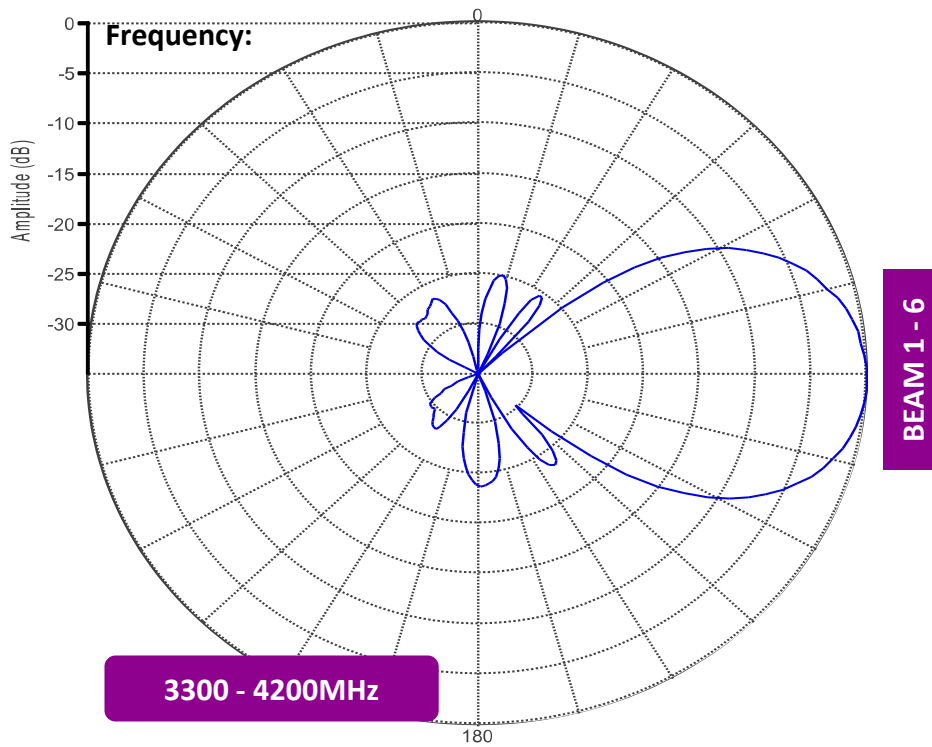


## 2.00 PATTERN DIAGRAM

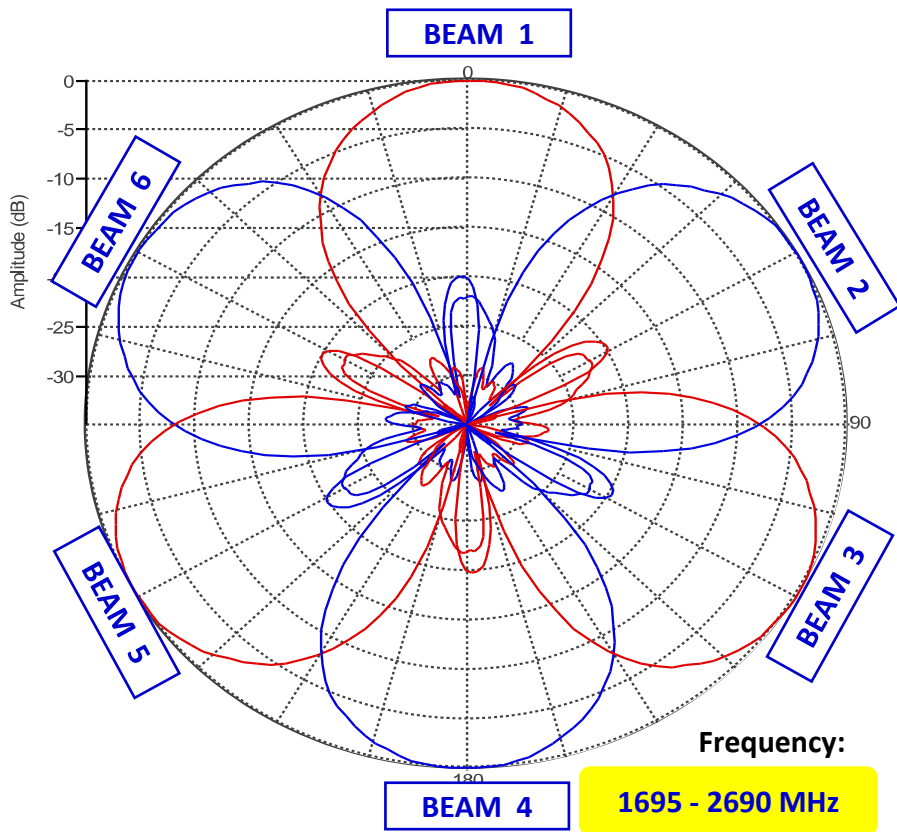
### 2.10 FB Horizontal Pattern



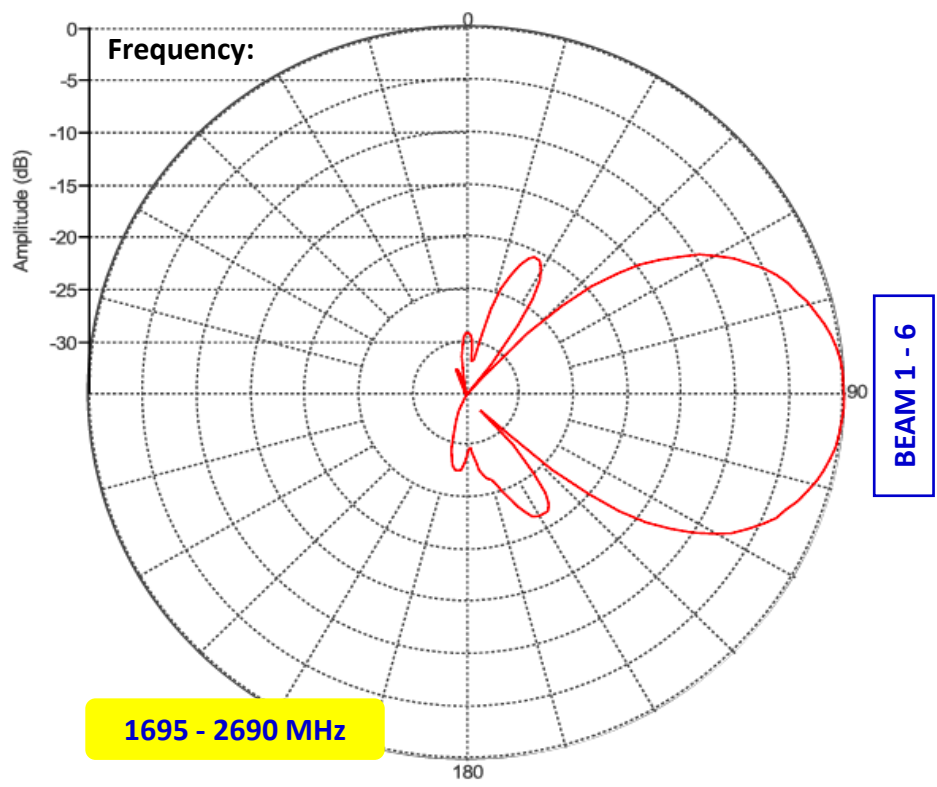
### 2.20 FB Vertical Pattern



### 2.30 HB Horizontal Pattern



### 2.40 HB Vertical Pattern



### 3.00 BRACKET INSTALLATION

#### 3.10 Bolts & Nuts Requirements

nos	Bracket	Base Plate Bolts & Nuts Sets		Structure Bolts & Nuts Sets	
	Qty	Size	Qty	Size	Qty
1	4	M10 x 25mm	4	M12 x 160mm	4

#### 3.11 Bracket



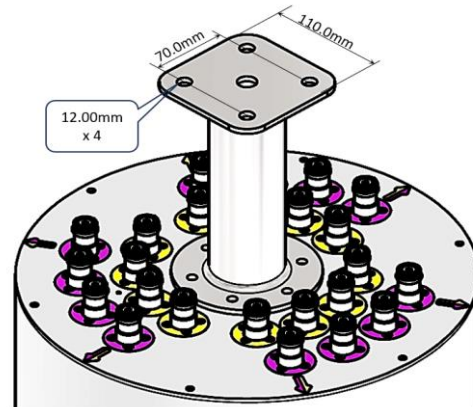
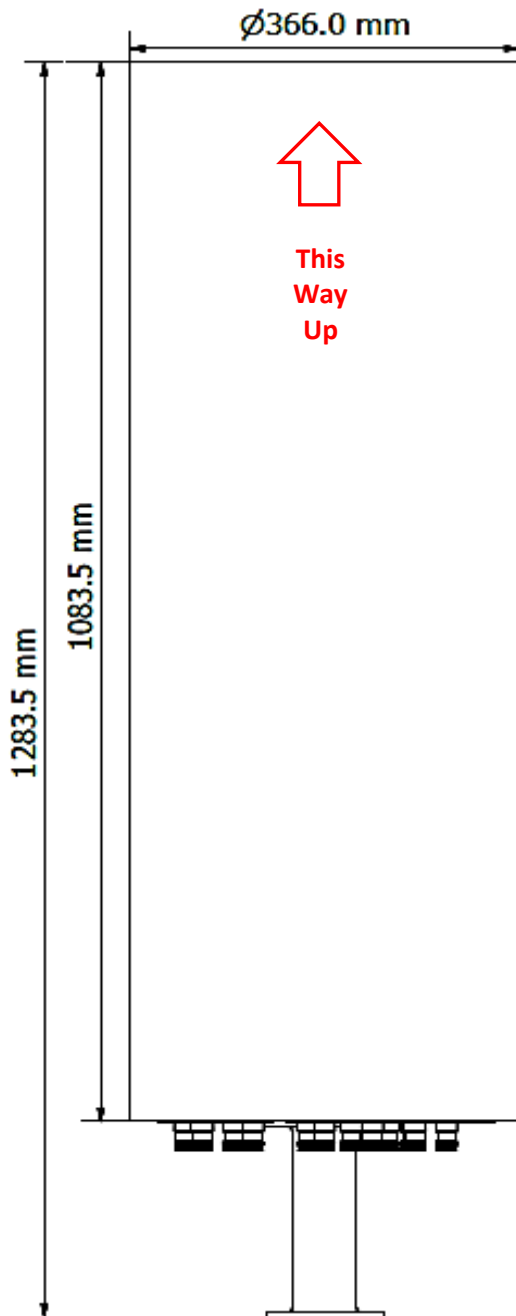
#### 3.12 Bolts & Nuts



#### 3.13 Adjustable Spanner (x2)

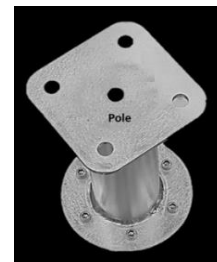


#### 3.20 Antenna Dimensions



#### 3.30 Installation Sample

##### Step 1



##### Step 2



##### Step 3



#### **WARNING:**

*Do not mount this antenna Up Side Down.  
Drainage hole at the bottom.*