

Date	Prepared by	Approved by	Document nos	Revision
14 Sep 2021	Ray Ling	Pavel	MS-8F30-IM-001	01

INSTRUCTION MANUAL MS-8F30

TABLE OF CONTENTS:

1.00 BEAMS & CONNECTORS:

- 1.10 Plan View Resultant Beam
- 1.20 Rear View Connector Layout
- 1.30 Connector Ports Table

2.00 BEAM PATTERN

- 2.10 Horizontal Beam Pattern
 - 2.11 Top Row Beam 1 - 4
 - 2.12 Bottom Row Beam 5 - 8
- 2.20 Vertical Beam Pattern

3.00 TRANSPORTATION / INSTALLATION

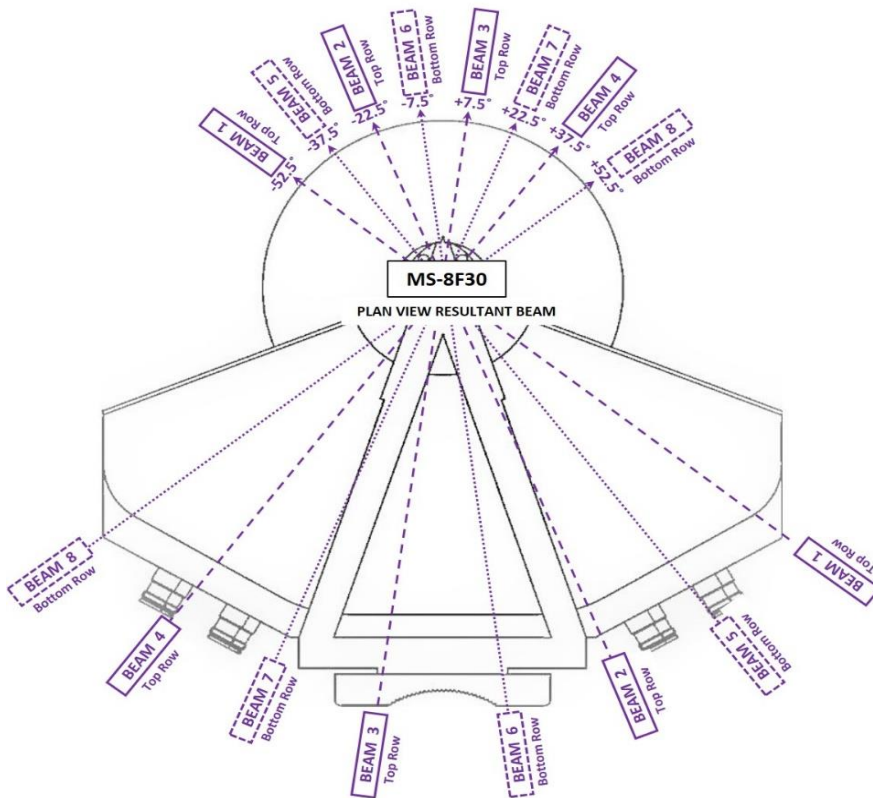
- 3.10 Transportation (From Point to Point)
- 3.20 Bracket Installation
 - 3.21 Bolts & Nuts Sets
 - 3.22 Bracket
- 3.30 Tools Requirement
 - 3.31 Adjustable Spanner
 - 3.32 M12 Spanner
- 3.40 Bracket Installation Sample
- 3.50 Antenna Installation
 - 3.51 Antenna Leveling
 - 3.52 Digital Level Gauge Calibration
 - 3.53 Adjustment Requirement

Revision History:

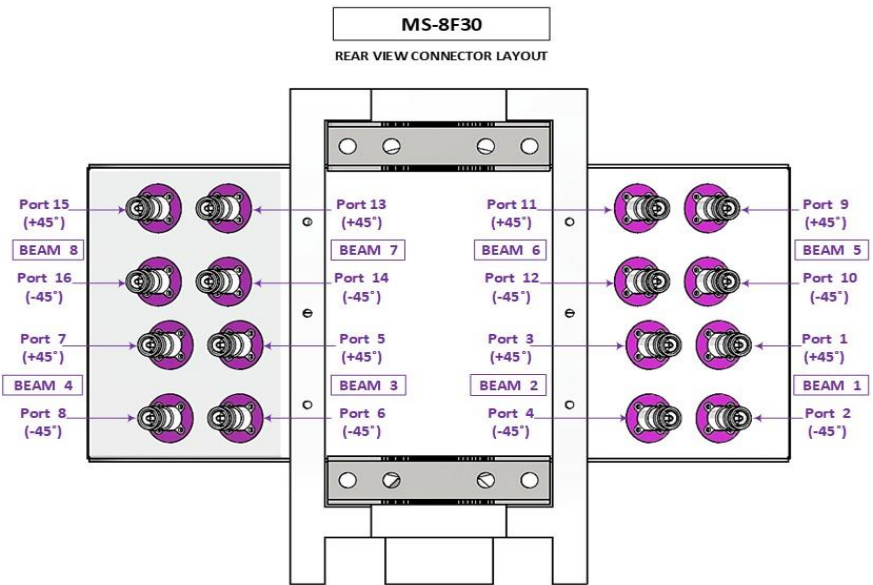
Date	Description	Revised by	Revision nos.
14-Sep-21	Revised as per new design of backshell connector at the rear side.	Ray	01

1.00 BEAMS & CONNECTORS:

1.10 Plan View Resultant Beam



1.20 Rear View Connector Layout



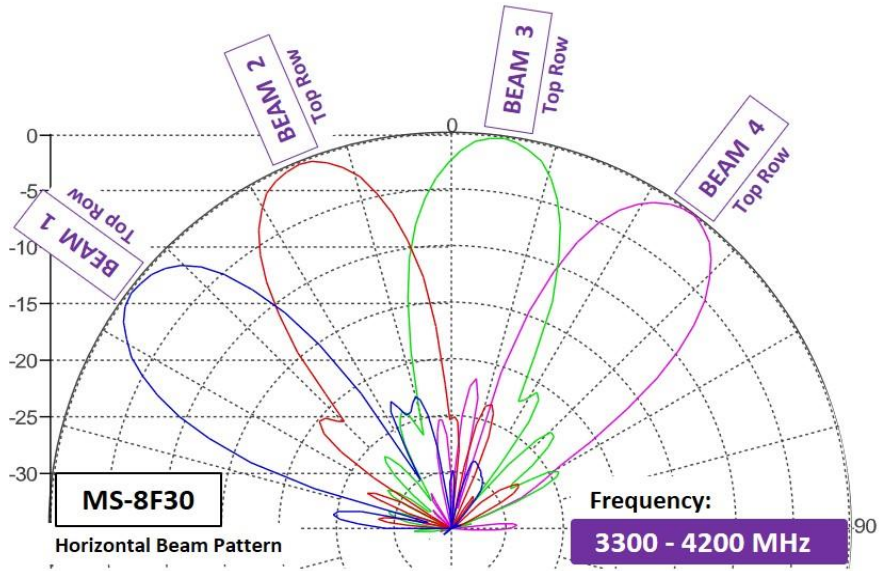
1.30 Connector Ports Table

	BEAM 8	BEAM 7	BEAM 6	BEAM 5	
	Port 15 (+45°)	Port 13 (+45°)	Port 11 (+45°)	Port 9 (+45°)	Bottom
	Port 16 (-45°)	Port 14 (-45°)	Port 12 (-45°)	Port 10 (-45°)	
Top	BEAM 4	BEAM 3	BEAM 2	BEAM 1	
	Port 7 (+45°)	Port 5 (+45°)	Port 3 (+45°)	Port 1 (+45°)	
	Port 8 (-45°)	Port 6 (-45°)	Port 4 (-45°)	Port 2 (-45°)	

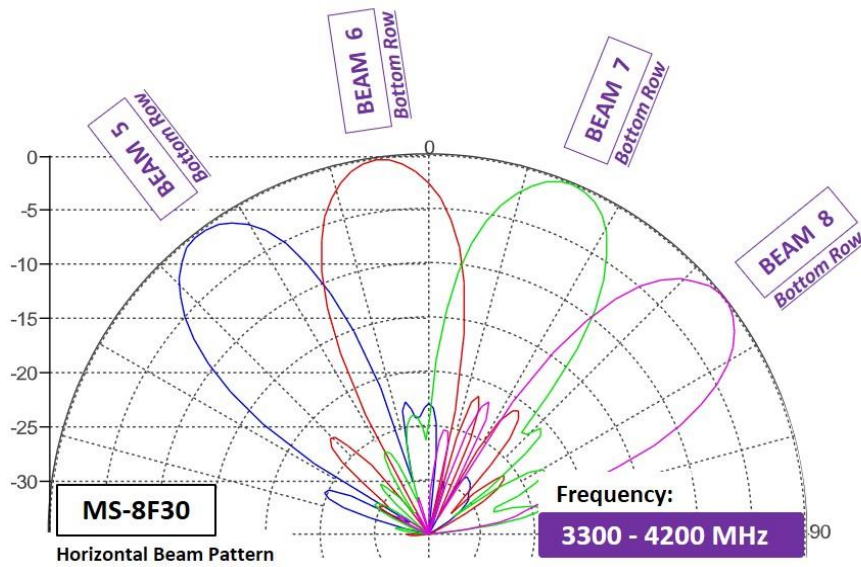
2.00 BEAM PATTERN

2.10 Horizontal Beam Pattern

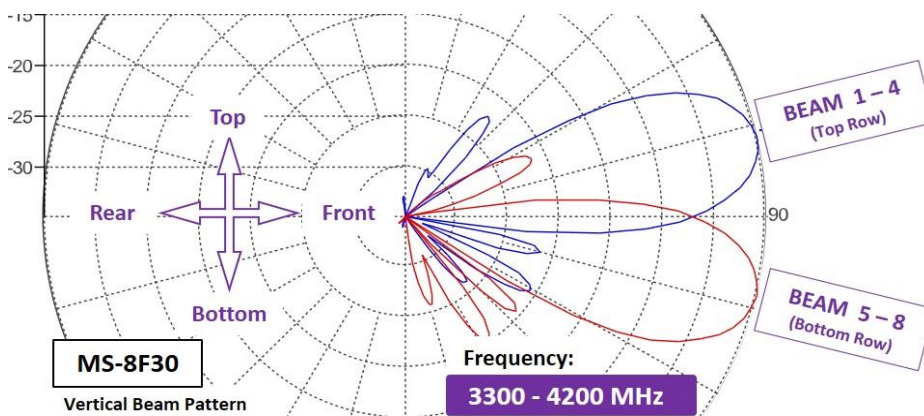
2.11 Top Row Beam 1 - 4



2.12 Bottom Row Beam 5 - 8



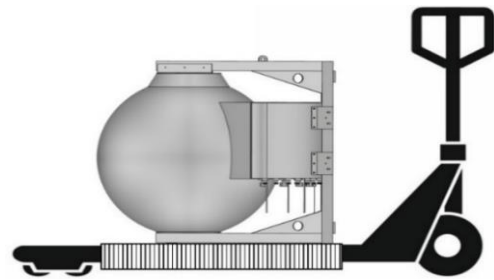
2.20 Vertical Beam Pattern



3.00 TRANSPORTATION / INSTALLATION

3.10 Transportation (From Point to Point)

Appropriate material handling machine should be used. **(Risk Assessment applies for Forklift or Pallet Truck Lifting)**



3.20 Bracket Installation

1. Bracket Qty	2
----------------	---

2. Bolts & Nuts Sets	M12 x 200mm x 4 sets
----------------------	----------------------

3.21 Bolts & Nuts Sets



3.22 Bracket



3.30 Tools Requirement

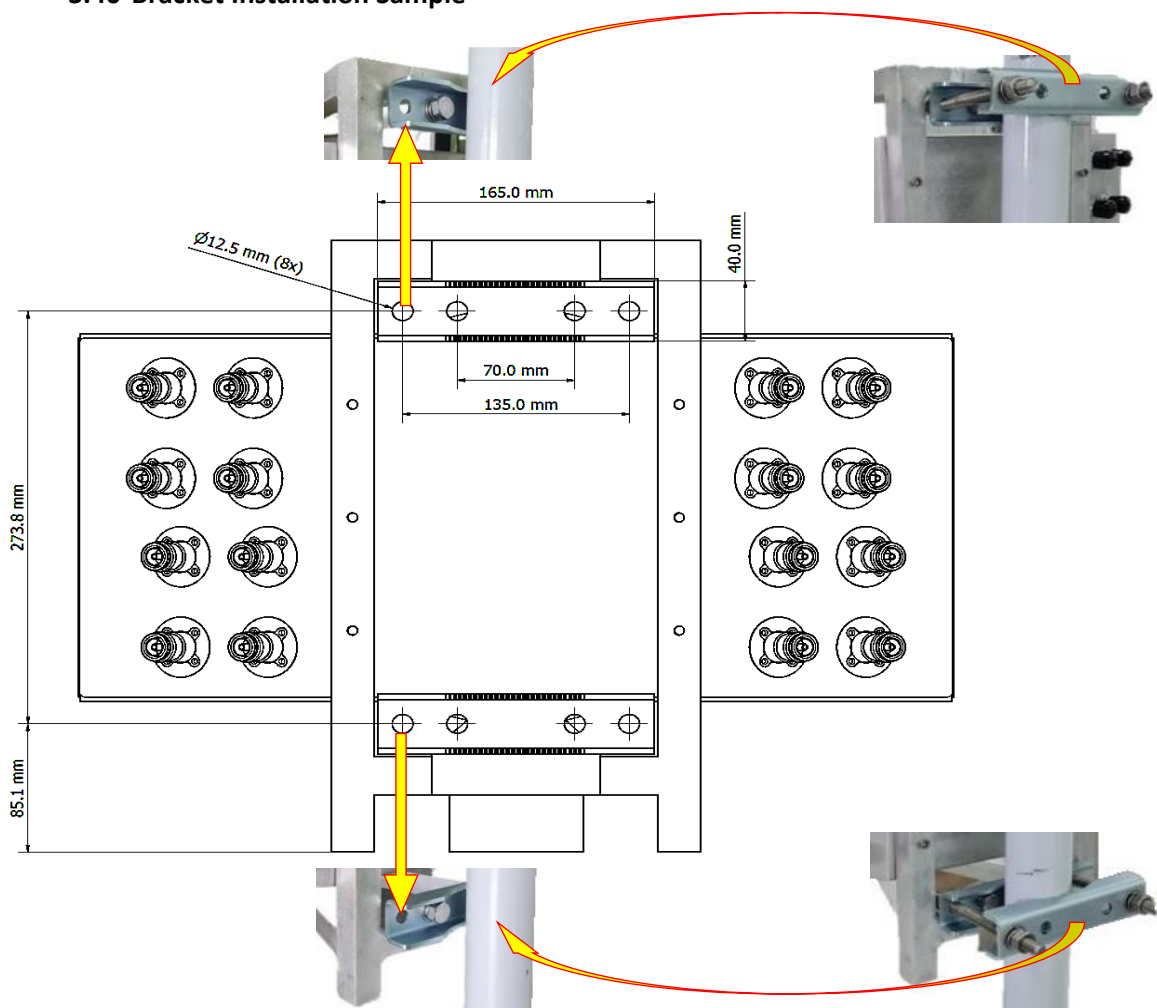
3.31 Adjustable Spanner



3.32 M12 Spanner



3.40 Bracket Installation Sample

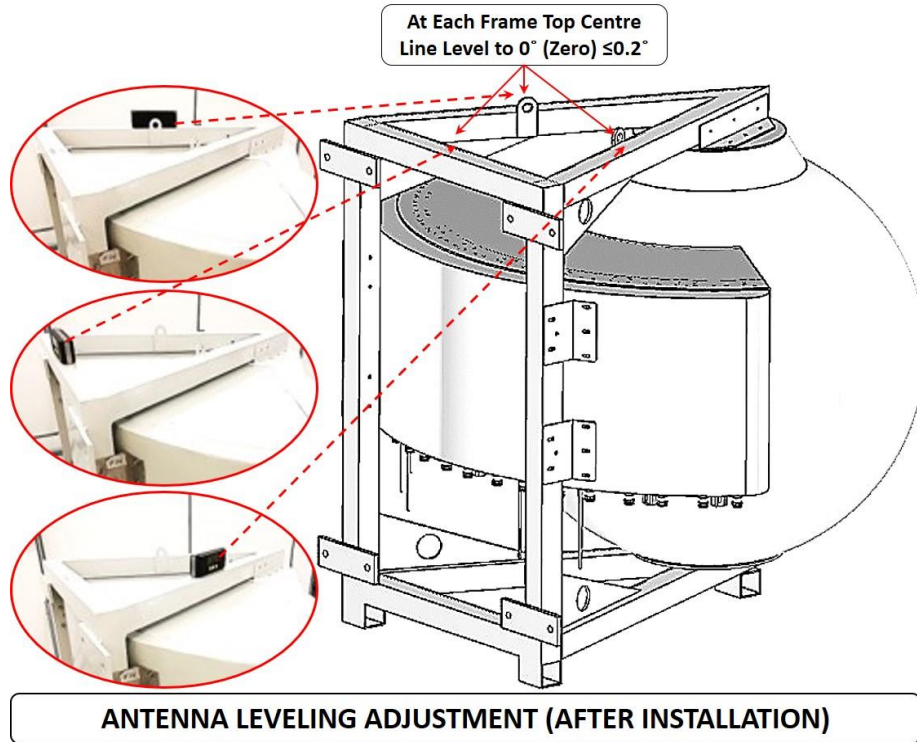


3.50 Antenna Installation

With reference to **Item 3.20 Bracket Mounting**, End user is required to Custom-Make the additional supporting bracket and tighten it to the existing Antenna bracket to meet the deployment needs.

3.51 Antenna Leveling

After the Antenna is mounted to the bracket, it is required to be adjusted to 0° (Zero Degree) with $\leq 0.2^\circ$ on 3 sides of the frame top level. (Rear, Right & Left=As shown in picture)



3.52 Digital Level Gauge Calibration



3.53 Adjustment Requirement



ANTENNA LEVELING ACCEPTED

REQUIRE ADJUSTMENT