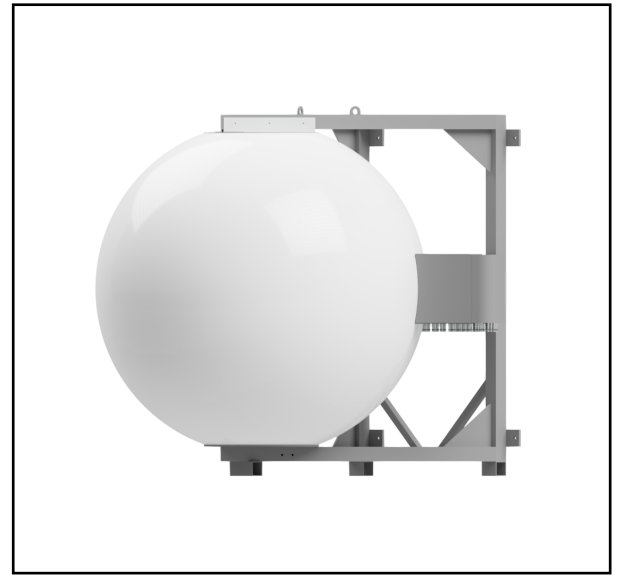
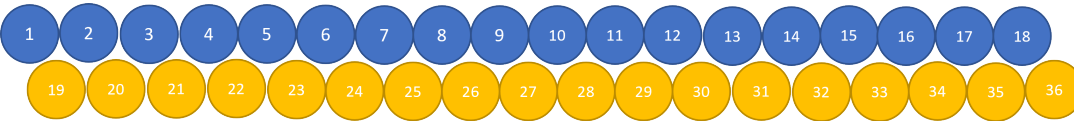


MS-36F120

Multi-Beam Wide Band Spherical Lens Antenna : 2 rows of 18 independent high frequency (3300-4200MHz) cross-polarized beams.

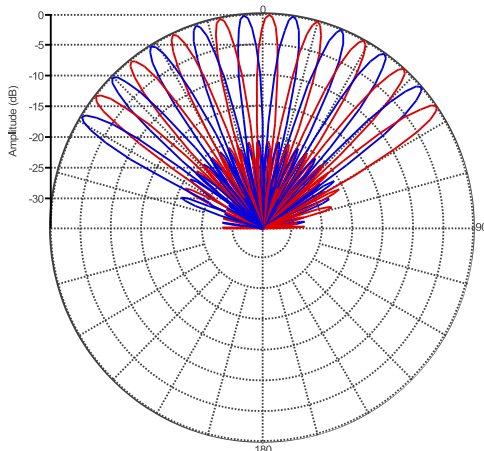


BEAM LAYOUT:

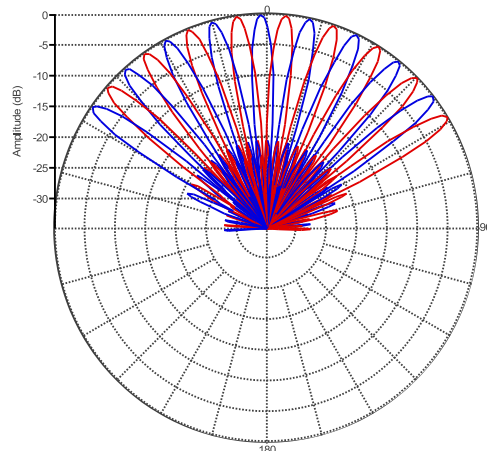


PATTERN RESULTS (3.6GHz):

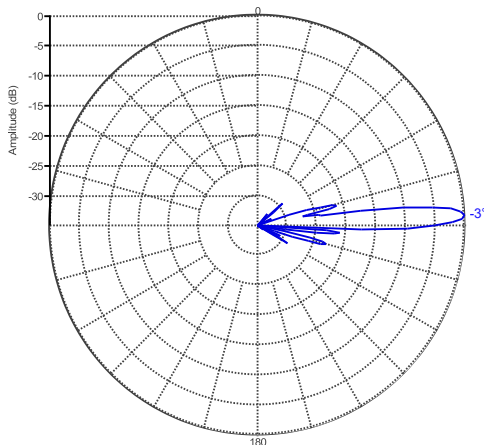
Horizontal Pattern Top Row



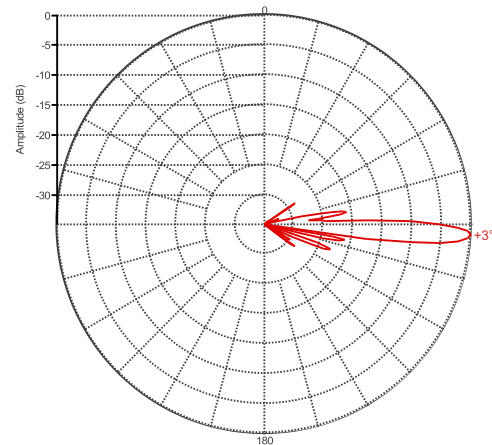
Horizontal Pattern Bottom Row



Vertical Pattern Top Row



Vertical Pattern Bottom Row



TECHNICAL SPECIFICATIONS PER BEAM

Frequency	3300-4200 MHz
Gain	27.5dBi
VSWR	<1.5:1
Polarization	Dual Slant ±45°
Horizontal Coverage	120°
Horizontal Beamwidth (10dB level) Horizontal Beamwidth (3dB level)	8° 4.5°
Vertical Beamwidth (10dB level) Vertical Beamwidth (3dB level)	8° 4.5°
Beam Cross-over	8dB typical
Total Number of Beams	36
Tilt (Factory Set):	-3° upper row +3° lower row
First Sidelobe level	<-18dB
Front to Back Ratio	>28dB
Isolation Port to Port - Polarization	>28dB
Isolation Port to Port - Beam	>28dB
Power Rating	250W per port
Intermodulation	<-153dBc
Impedance	50 ohm
Connector Quantity and Type	72 X 4.3-10 female

MECHANICAL DATA

Dimensions (H x W x D)	Spherical Lens diameter: 120cm/47inch Antenna dimensions: 140 x 140 x 160 cm 55 x 55 x 62 inch
Antenna Weight	70kg 154lbs
Radome Material	Fiber Glass
Mounting	2 position pipe mount Compatible pipe diameter: 6.1 – 11.4 cm 2.4 – 4.5 inch

ENVIRONMENTAL RATINGS

Humidity	95% RH @ +30°C
Temperature	-40°C to +70°C
Wind load	959 N @ 160 km/hr 216 lbf @ 160km/hr

CONNECTOR LAYOUT: