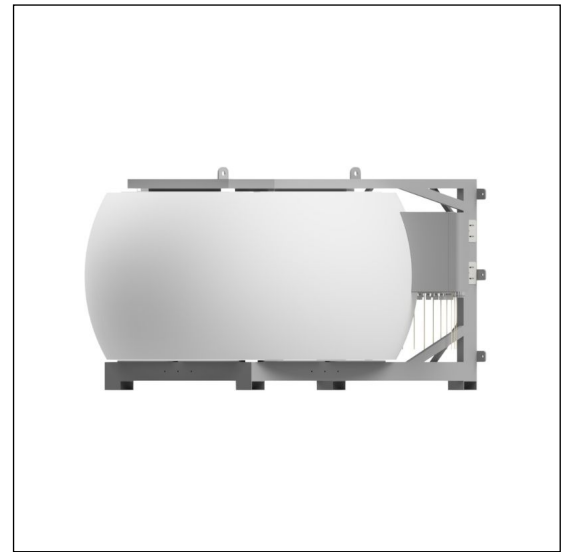


MS-24F180

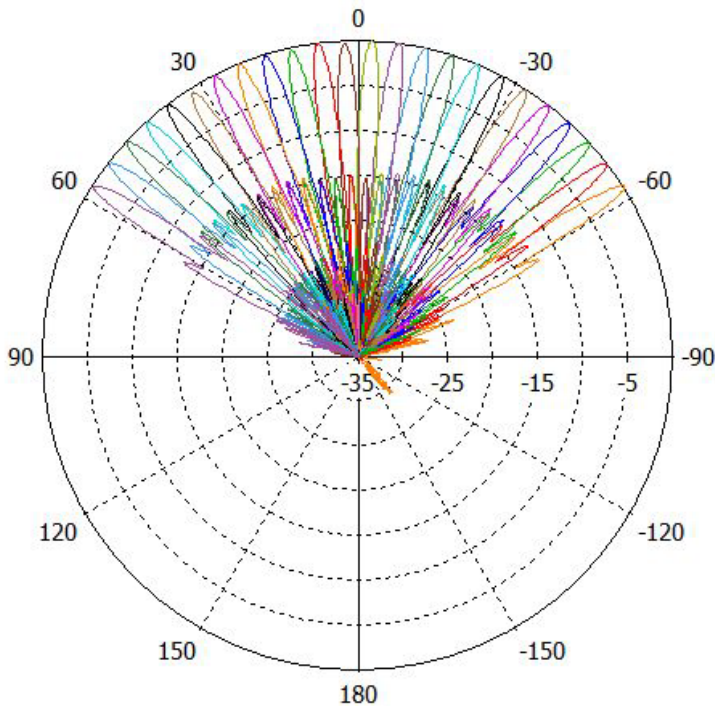
Multi-Beam Spherical Lens Antenna:

- 24 F-Band (3.3 - 4.2 GHz) cross-polarized beams
- Each beam has 2 port to support 2X2 MIMO
- Each beam has independent tilt from 0° to 15°
- External RET Controller Part # MS-EXT-RET-24F180

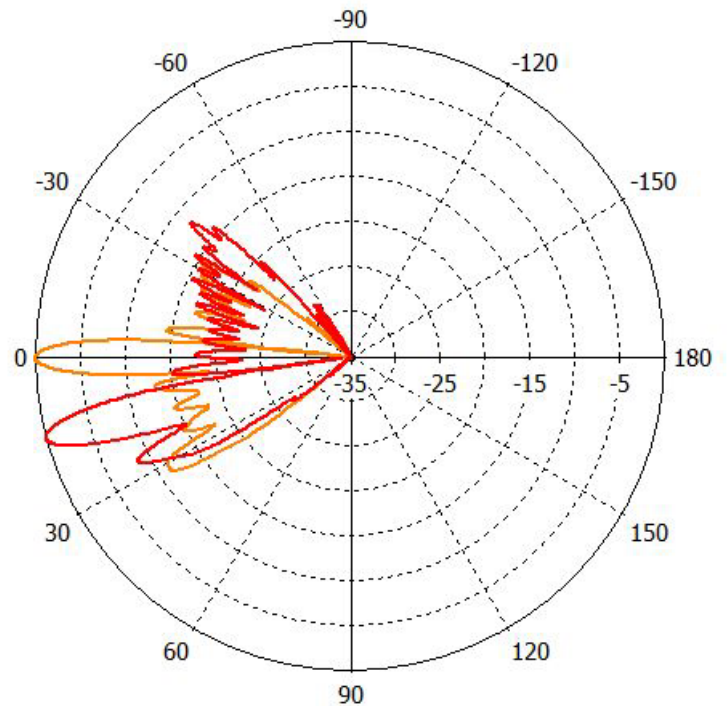


PATTERN RESULTS: (3.9GHz)

Horizontal Pattern



Vertical Pattern 0° & 15° tilt



TECHNICAL SPECIFICATIONS

Frequency	3.3 - 4.2 GHz
Gain	30dBi
VSWR	<1.5:1
Polarization	Dual Slant ±45°
Horizontal Coverage	120°
Horizontal Beamwidth (10dB level)	5°
Horizontal Beamwidth (3dB level)	3°
Vertical Beamwidth (10dB level)	9°
Vertical Beamwidth (3dB level)	5°
Beam Cross-over	10dB typical
Total Number of Beams	24
RET	0° to 15°
First Sidelobe level	<-16dB
Front to Back Ratio	>28dB
Isolation Port to Port - Polarization	>28dB
Isolation Port to Port - Beam	>28dB
Power Rating	50W per port
Total Applied Power	≤ 2.5KWatts
Intermodulation	<-153dBc
Impedance	50 ohm
Connector Quantity and Type	48 X 4.3-10 female

MECHANICAL DATA

Dimensions (H x W x D)	Spherical Lens diameter: 180cm/70inch Antenna dimensions: 122 x 205 x 207 cm 48 x 80 x 81 inch
Antenna Weight w/RET	242 kg 533.5 lbs
Radome Material	Fiber Glass
Mounting	2 position pipe mount Compatible pipe diameter: 6.1 – 11.4 cm 2.4 – 4.5 inch

ENVIRONMENTAL RATINGS

Humidity	95% RH @ +30°C
Temperature	-40°C to +70°C
Wind load @ 150 km/hr	N/lbf Frontal: 1548/348 Lateral: 1548/348 Rear: 1548/348

CONNECTOR LAYOUT:

