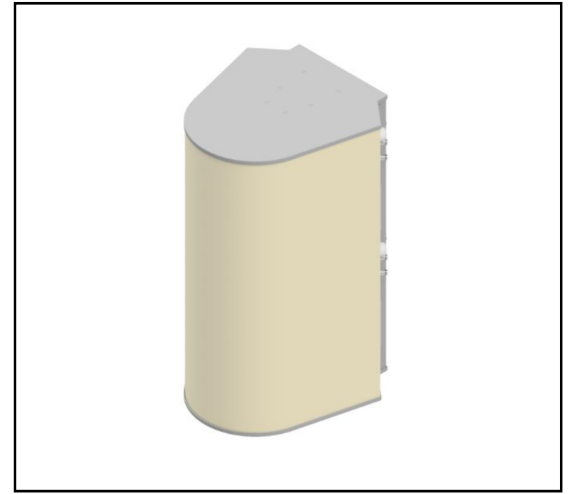
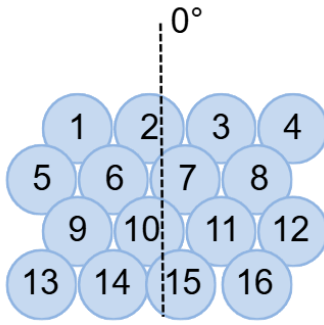


## MS-16.16W45

### Multi-Beam Wide Band Spherical Lens Antenna:

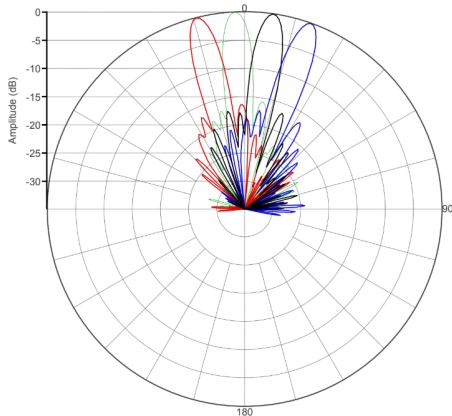
- 4 rows of 4 dual-polarized beams to cover 5.125 – 7.125 GHz.
- Each beam has 4 ports to provide 4x4 MIMO.
- Designed for high capacity wireless networking (Wi-Fi 6E, Wi-Fi 7, Wi-Fi 8).

### BEAM LAYOUT:

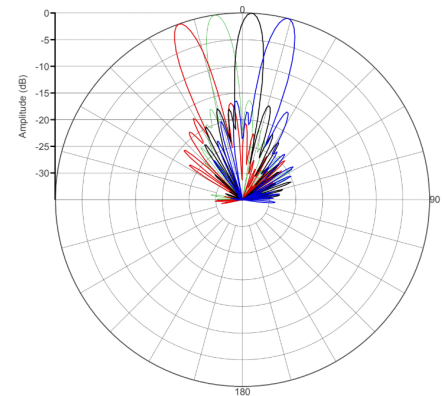


### PATTERNS @ 6GHz :

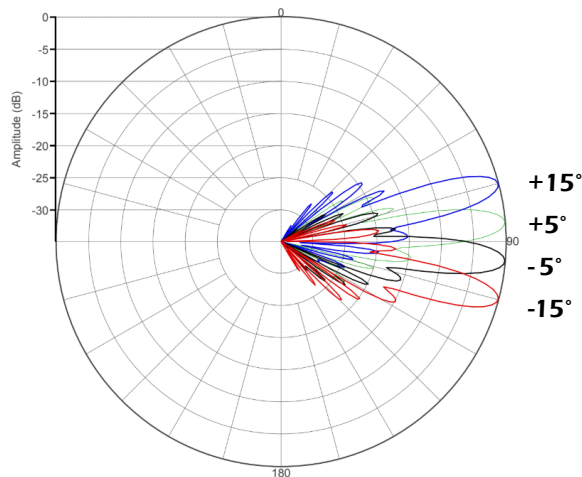
#### Horizontal Pattern, Beam rows 1,3



#### Horizontal Pattern, Beam rows 2,4



#### Vertical Pattern



PRELIMINARY

### TECHNICAL SPECIFICATIONS PER BEAM

Frequency	5.125 - 7.125 GHz
Gain	24.5dBi
VSWR	< 2:1 (RL > 10 dB)
Polarization	Dual Slant ±45°
Horizontal Coverage	48°
Vertical Coverage	40°
Horizontal Beamwidth (8dB level)	11°
Horizontal Beamwidth (3dB level)	7°
Vertical Beamwidth (8dB level)	11°
Vertical Beamwidth (3dB level)	7°
Beam Cross-over	8dB
Total Number of Beams	16
Number of Ports total	64
Beam Tilt (Factory Set)	Fixed
Sidelobe level	-16dB
Front to Back Ratio, @ 180°	30dB
Isolation Port to Port - Polarization	25dB
Isolation Port to Port - Beam	25dB
Power Rating	10W per port
Impedance	50 ohm
Connector Quantity and Type	64 x 4.3-10 Female

### MECHANICAL DATA

Dimensions (H x W x D)	Spherical Lens diameter: 45cm/18 inch  Antenna dimensions: 98.8 x 61.7 x 73.7 cm 38.9 x 24.3 x 29 inch
Antenna Weight	30 kg 66 lbs
Radome Material	Fiberglass
Mounting	Standard pipe mount  Compatible pipe diameter : 6.1 – 11.4 cm 2.4 – 4.5 inch

### ENVIRONMENTAL RATINGS

Humidity	95% RH @ +30°C
Temperature	-40°C to +70°C
Wind load @ 150 km/h	N/Ibf Frontal: 430/96.7 Lateral: 668/150.2 Rear: 617/138.7

### CONNECTOR LAYOUT:

