

# MATSING<sup>®</sup>

LENS TECHNOLOGY ENABLED

## MS MBA Series antenna's (Unpacking instruction)



# Table Of Contents

## 1.00 Multi Beam Antenna (MBA) Overview

- 1.10 MBA-7 series models
- 1.20 MBA-6 series models
- 1.30 MBA-4 series models
- 1.40 MBA-3 series models
- 1.50 MBA-2 series models
- 1.60 MBA-1 series models

## 2.00 Antenna Unpacking Procedure

- 2.10 Safety precaution
- 2.20 Tools
- 2.30 Carton box unpacking (Small and Light Weight Antenna)
- 2.40 Wooden crate unpacking (Medium and Large Heavy Weight Antenna)
- 2.50 Wooden crate unpacking (Medium and Small Antenna)
- 2.60 Final inspection after unpacking

## 3.00 Caution label

- 3.10 Safe handling
- 3.20 Safe transporting

### Revision History:

<u>Date</u>	<u>Description</u>	<u>Rev By</u>	<u>Check By</u>	<u>Rev no</u>
29-May-2020	Initial Release	RL	Pavel	0
19-Nov-2024	Update new model	RL	Patrick	1
06-May-2025	General update	RL	Patrick	2

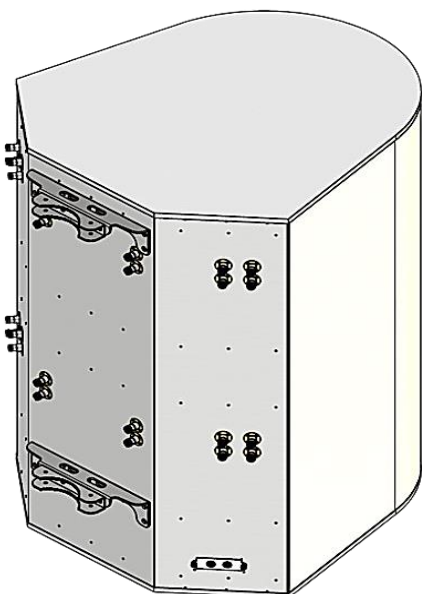
## 1.00 Multi Beam Antenna (MBA) Overview

### 1.10 MBA-7 series models



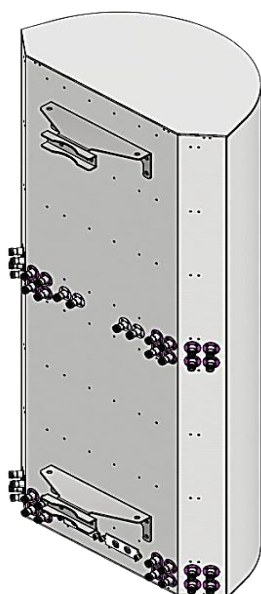
no.	Model	Dimensions (cm)		
		Height	Width	Depth
1	MS-MBA-7-C2	63.2	61.9	72.6
2	MS-MBA-7-F2	63.2	61.9	72.6

### 1.20 MBA-6 series models



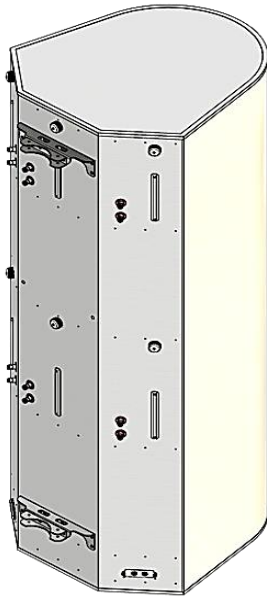
no.	Model	Dimensions (cm)		
		Height	Width	Depth
1	MS-MBA-6.3-H4-L4	241.9	93.7	108.6
2	MS-MBA-6.3-H4-T4	241.9	93.7	108.6
3	MS-MBA-6.6.3-C4-H4-L2	241.9	93.7	108.6
4	MS-MBA-6.6.3-F4-H4-L2	241.9	93.7	108.6
5	MS-MBA-6.6.3-F4-H4-T2	241.9	93.7	108.6
6	MS-MBA-6.3-H4-L2	184.4	93.7	108.6
7	MS-MBA-6.6-C4-H4	184.4	93.7	108.6
8	MS-MBA-6.6-F4-H4	184.4	93.7	108.6
9	MS-MBA-6-H4	126.8	93.7	108.6
10	MS-MBA-6.6-F2-F2	110.3	61.9	72.3
11	MS-MBA-6.6-F2-F2-45	110.3	61.9	72.3
12	MS-MBA-6.6-F2-F2-45M	110.3	61.9	72.3
13	MS-MBA-6-C4	104.3	61.9	72.3
14	MS-MBA-6-F4	104.3	61.9	72.3

### 1.30 MBA-4 series models



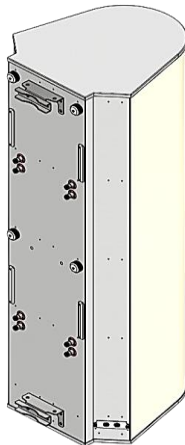
no.	Model	Dimensions (cm)		
		Height	Width	Depth
1	MS-MBA-4.4.2-C4-H4-L4	241.9	61.9	72.3
2	MS-MBA-4.4.2-F4-H4-L4	241.9	61.9	72.3
3	MS-MBA-4.4.2-C4-H2-L2	163.7	62.0	72.2
4	MS-MBA-4.4.2-F4-H2-L2	163.7	62.0	72.2
5	MS-MBA-4-C4A3	159.8	36.3	42.8
6	MS-MBA-4-C8A3	152.7	70.6	52.9
7	MS-MBA-4.4.2-C2-H2-L2	141.2	62.0	72.2
8	MS-MBA-4.4.2-F2-H2-L2	141.2	62.0	72.2
9	MS-MBA-4.4-SH2-SH2-45M	110.3	61.9	72.3
10	MS-MBA-4.4-SH2-SH2-45	110.3	61.9	72.3
11	MS-MBA-4-H4	110.3	61.9	72.3
12	MS-MBA-4.2-H2-L2	109.3	61.9	72.3
13	MS-MBA-4.2-H2-T2	109.3	61.9	72.3
14	MS-MBA-4.4-SH2-SH2	91.2	61.7	68.3
15	MS-MBA-4-H2	63.5	61.9	72.3
16	MS-MBA-4-F2	55.0	36.3	46.8

#### 1.40 MBA-3 series models



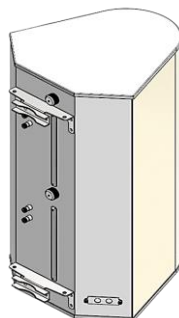
no.	Model	Dimensions (cm)		
		Height	Width	Depth
1	MS-MBA-3.2-H8-L4	244.0	61.9	72.6
2	MS-MBA-3.2-H8-T4	244.0	61.9	72.6
3	MS-MBA-3-H8A2	241.9	61.8	68.3
4	MS-MBA-3-L4A2-S	241.9	93.7	108.6
5	MS-MBA-3-L4A2	241.9	93.7	108.6
6	MS-MBA-3-T4A2	241.9	93.7	108.6
7	MS-MBA-3.3-C4A3-H4A2-I	210.9	61.8	69.0
8	MS-MBA-3.3-C4A3-H4A2	210.9	61.8	69.0
9	MS-MBA-3-F4A5-S	195.8	29.5	37.1
10	MS-MBA-3-F4A5	195.8	29.5	37.1
11	MS-MBA-3.2-H4-L4	183.2	61.9	72.3
12	MS-MBA-3.2-H4-T4	183.2	61.9	72.3
13	MS-MBA-3-H8	164.0	61.8	68.3
14	MS-MBA-3.3.2-C2-H2-L2-I	139.2	61.9	72.3
15	MS-MBA-3.3.2-C2-H2-L2	139.2	61.9	72.3
16	MS-MBA-3.3.2-F2-H2-L2	139.2	61.9	72.3
17	MS-MBA-3.3-C2-H4	130.2	61.8	68.3
18	MS-MBA-3.3-F2-H4	130.2	61.8	68.3
19	MS-MBA-3.3-LAA2-C4	121.4	42.9	36.2
20	MS-MBA-3.3-LAA2-F4	121.4	42.9	36.2
21	MS-MBA-3-C4A3	118.9	29.5	37.1
22	MS-MBA-3-F4A3	118.9	29.5	37.1
23	MS-MBA-3.2-H2-L2	99.9	61.9	72.3
24	MS-MBA-3-H4	89.9	61.8	68.3
25	MS-MBA-3-F4	55.7	36.3	46.8
26	MS-MBA-3-H2	52.9	61.8	68.3
27	MS-MBA-3-F2	37.0	36.3	46.8

#### 1.50 MBA-2 series models



no.	Model	Dimensions (cm)			Weight (kg)
		Height	Width	Depth	
1	MS-MBA-2-L4A2	177.8	61.9	72.3	52.86
2	MS-MBA-2-L4	112.3	61.9	72.3	36.22
3	MS-MBA-2-L2	63.9	61.3	72.0	24.28
4	MS-MBA-2-T2	63.9	61.3	72.0	24.28

#### 1.60 MBA-1 series models



no.	Model	Dimensions (cm)		
		Height	Width	Depth
1	MS-MBA-1-T4	109.8	61.8	68.34

## 2.00 Antenna Unpacking Procedure

### 2.10 Safety precaution



- Ensure unpacking is done on a **stable and level surface** with at least two people.
- Clear the area to ensure **enough space** for safe unpacking.
- Wear **appropriate PPE** (gloves, safety boots, and safety glasses).

### 2.20 Tools



Craw bar



Cutter



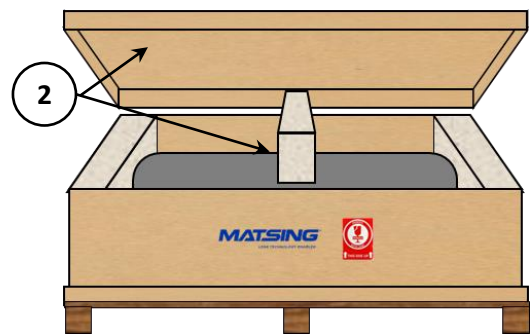
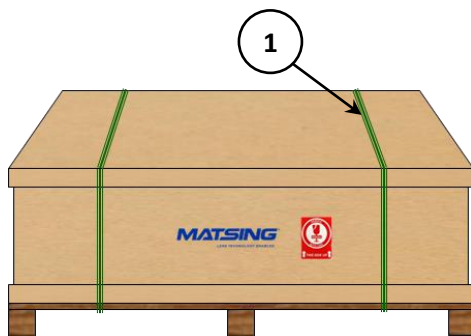
Screw Driver



Electric driver

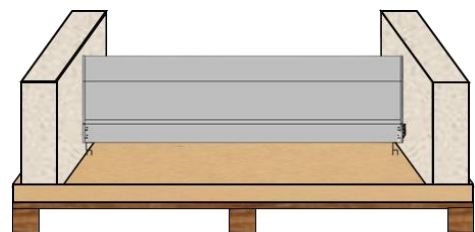
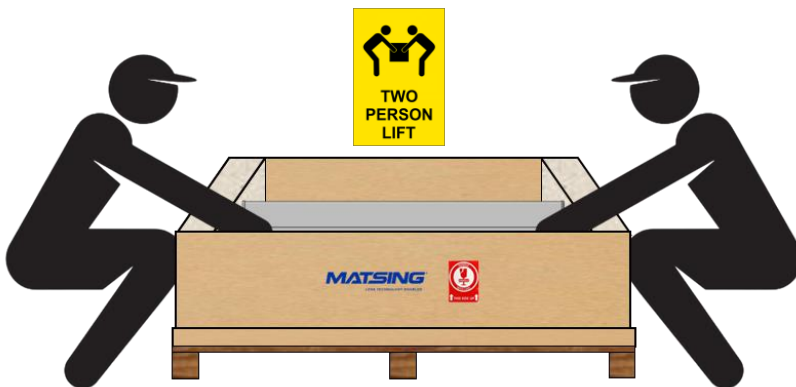
### 2.30 Carton box unpacking (Small and Light Weight Antenna)

- ① Use a cutter to cut and remove plastic straps.
- ② Open top cover and remove center support foam.



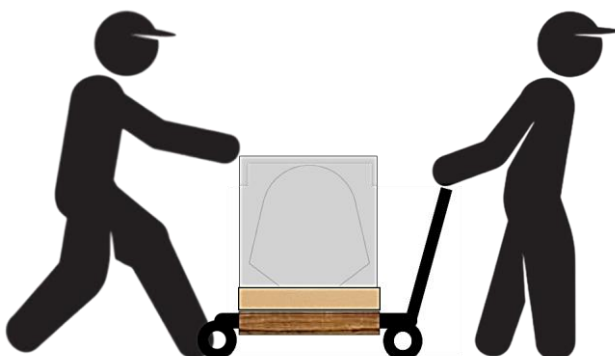
- ③ 2 person lift-up antenna from carton box.

- ④ Place antenna on pallet and seated horizontally.



- ⑤ Use a hydraulic jack for safe transporting.

- ⑥ ⚠ DO NOT carry by the antenna body.



## 2.40 Wooden crate unpacking (Medium and Large Heavy Weight Antenna)

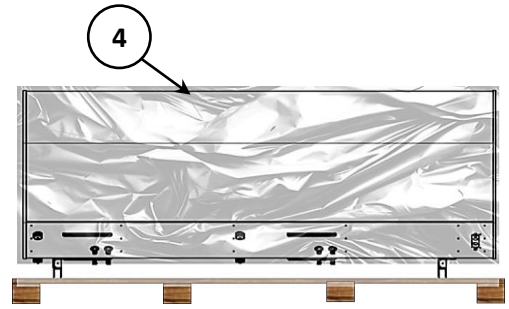
- ① Use a cutter to cut and remove plastic straps.      ② Use a hand drill to unscrew all wooden panels.



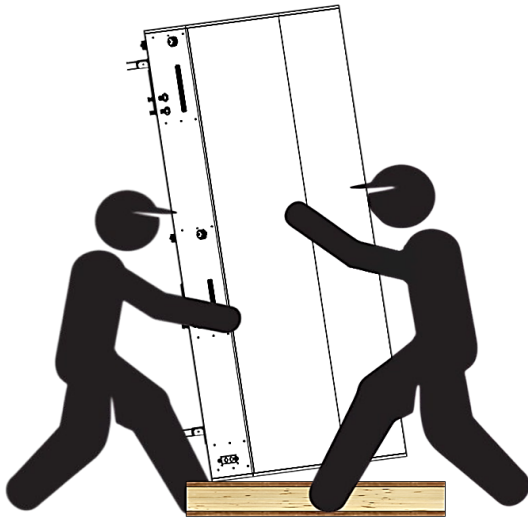
- ③ Remove the top cover and 4 side panels.



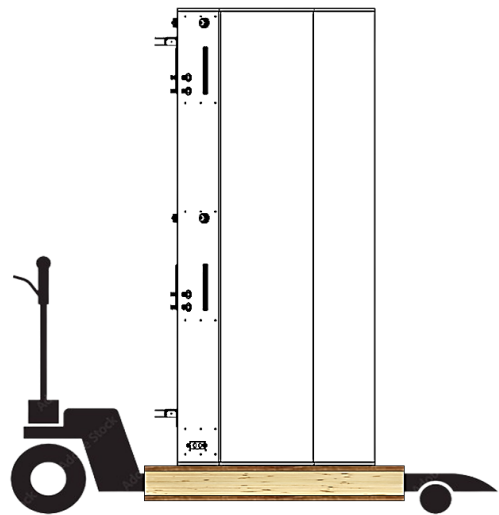
- ④ Unwrapping the shrink wrap.



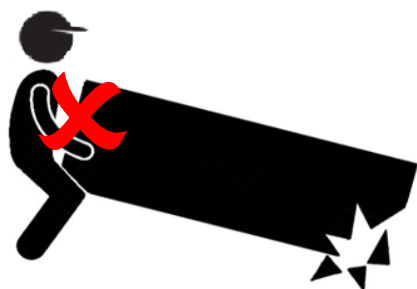
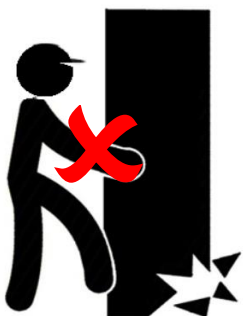
- ⑤ Lift up the antenna seated vertically.



- ⑥ Use a hydraulic jack for safe transporting.



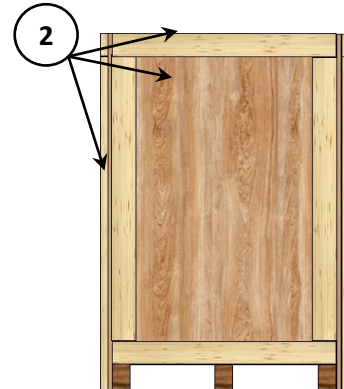
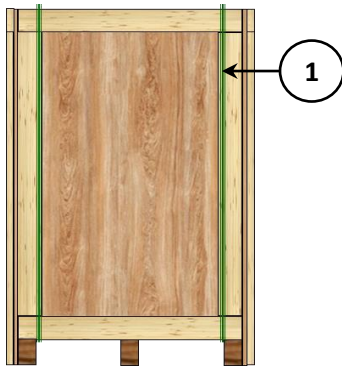
- ⑥ ⚠ DO NOT carry by one person.



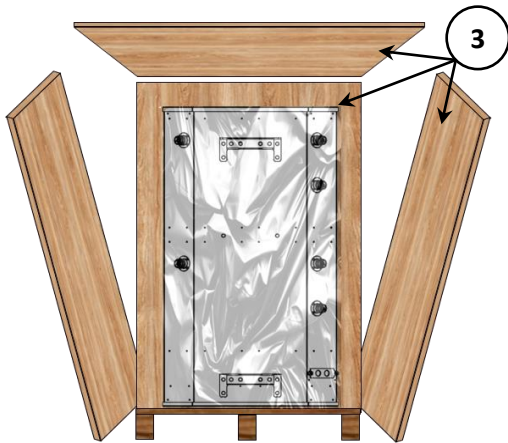


### 2.50 Wooden crate unpacking (Medium and Small Antenna)

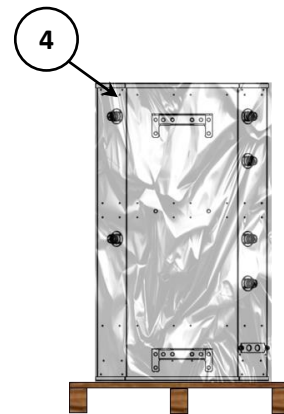
- ① Use a cutter to cut and remove plastic straps.      ② Use a hand drill to unscrew all wooden panels.



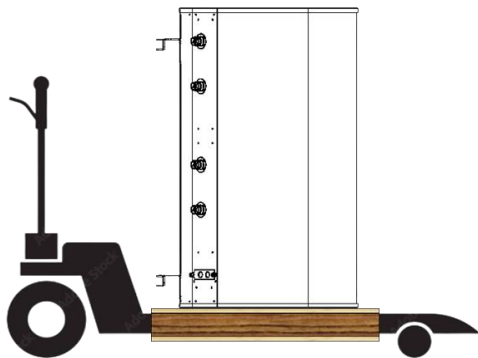
- ③ Remove the top cover and 4 side panels.



- ④ Unwrapping the shrink wrap.



- ⑤ Use a hydraulic jack for safe transporting.



- ⑥ ⚠ DO NOT lift or carry from the top cover.



### 2.60 Final inspection after unpacking

- ✓ Ensure the antenna is **free from physical damage** (dents, scratches, or loose parts).
- ✓ Verify that all **mounting brackets and connection ports are intact**.
- ✓ Confirm that all **required installation components** are included in the package.

### 3.00 Caution label

#### 3.10 Safe handling



#### 3.20 Safe transporting

