

MATSING[®]

LENS TECHNOLOGY ENABLED

MS Light Pole Series antenna's (Unpacking instruction)

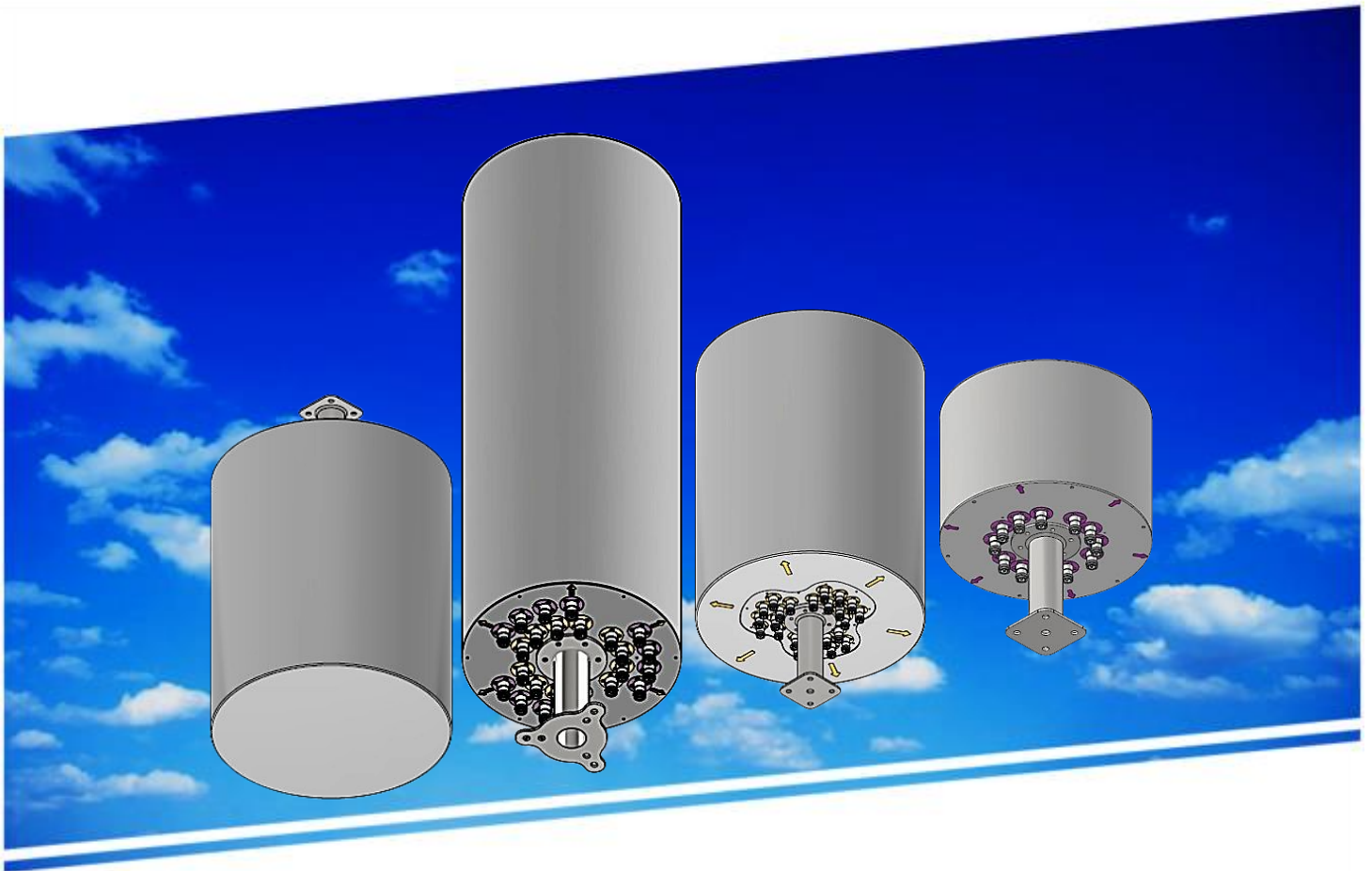


Table Of Contents

1.00 Light Pole Antenna (LPA) Overview

1.10 LPP 6.6 Series models

1.20 LP 6 Series models

2.00 Antenna Unloading, Transportation, and Unpacking

2.10 General Unloading Guidelines

2.20 Transportation Best Practices

2.30 Antenna Unpacking Procedure

2.31 Prepare the work area

2.32 Wooden crate unpacking

3.00 Safe Handling Caution Label

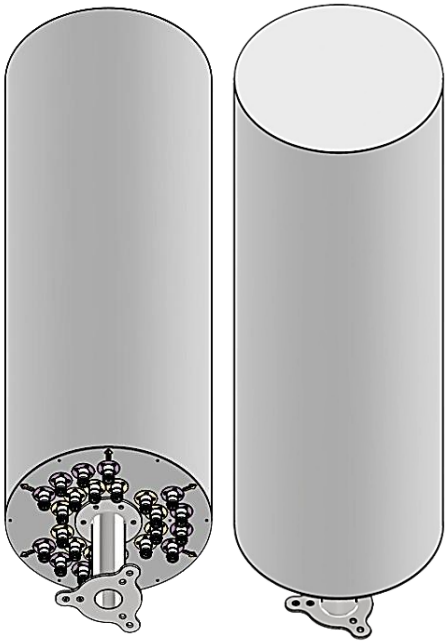
Revision History:

<u>Date</u>	<u>Description</u>	<u>Rev By</u>	<u>Check By</u>	<u>Rev no</u>
03-Dec-2020	Initial Release	RL	Pavel	0
02-Apr-2025	General update	RL	Pavel	1

1.00 Light Pole Antenna (LPA) Overview

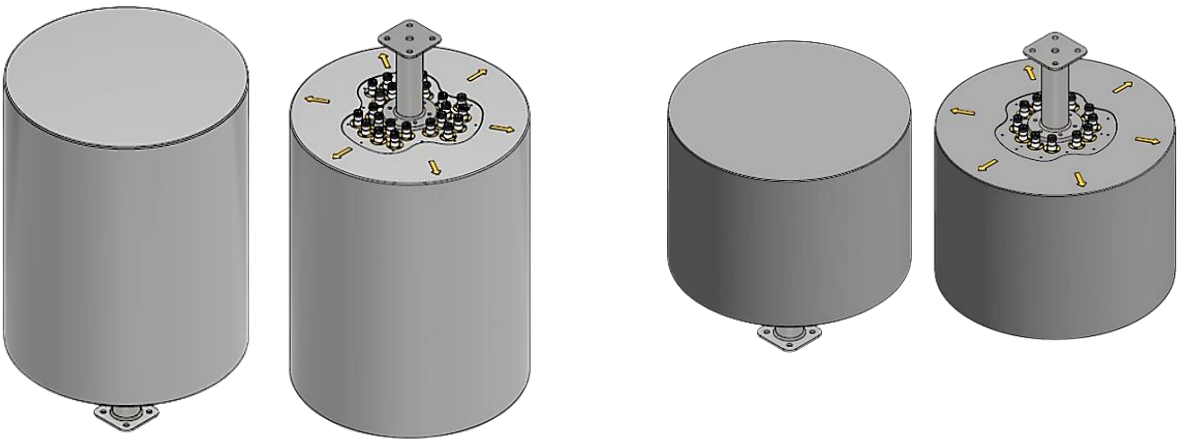
1.10 LPP 6.6 Series models

no.	Model	Dimensions (cm)		Weight
		Height	Dia (Ø)	(kg)
1	MS-LPP-6.6-F2-H2-22	132.0	37.1	18.02
2	MS-LPP-6.6-C2-H2-22	132.0	37.1	18.02



1.20 LP 6 Series models

no.	Model	Dimensions (cm)		Weight
		Height	Dia (Ø)	(kg)
1	MS-LP-6-H4-30i	88.8	52.8	20.48
2	MS-LP-6-H4	88.8	52.8	18.54
3	MS-LP-6-H2	59.2	52.8	12.66

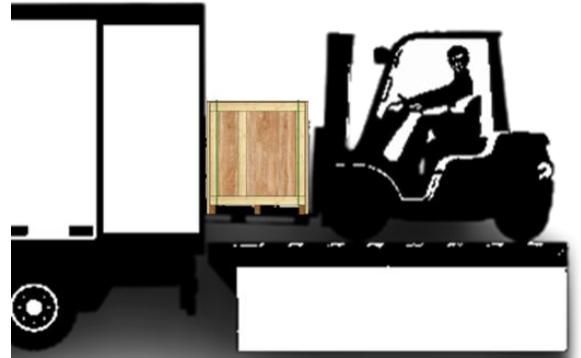


2.00 Antenna Unloading, Transportation, and Unpacking

⚠ **Important Note:** Unloading and transportation must be conducted by **certified logistics personnel** using appropriate lifting and handling equipment. The following guidelines ensure safe and correct handling of the antenna to prevent damage.

2.10 General Unloading Guidelines

- The **antenna must remain in its original packaging** until ready for installation.
- Use only **approved lifting methods** (crane, forklift, hydraulic jack) to handle the antenna.
- **Do not drop, tilt, or drag** the antenna to avoid damage to internal components.
- If using a **forklift**, position the forks **under the designated lifting base** of the crate.



2.20 Transportation Best Practices

- The antenna should be transported in an original packaging position and secured to prevent movement.
- Use **ratchet straps** or other securing methods to prevent shifting during transport.
- Avoid **excessive vibration or impact**, which may affect internal components.



2.30 Antenna Unpacking Procedure

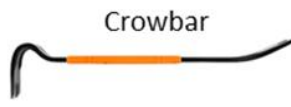
⚠ **Caution:** Ensure unpacking is done on a **stable and level surface** with at least **two people**.

2.31 Prepare the work area

- Clear the area to ensure **enough space** for safe unpacking.
- Wear **appropriate PPE** (gloves, safety boots, and safety glasses).

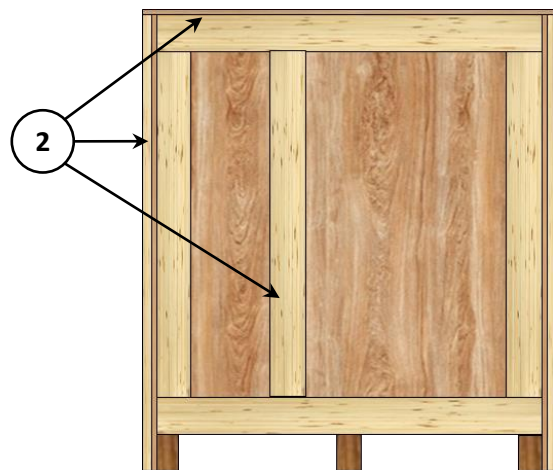
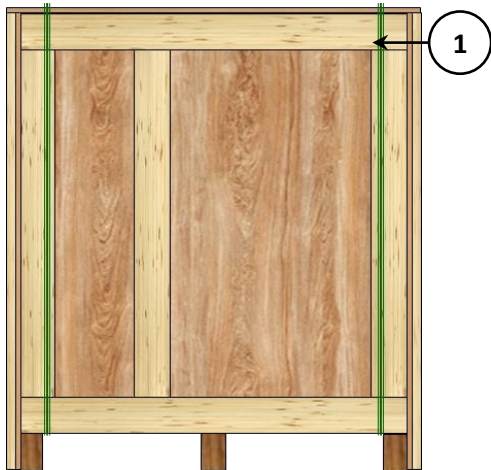
2.32 Wooden crate unpacking

Unpacking
Tools



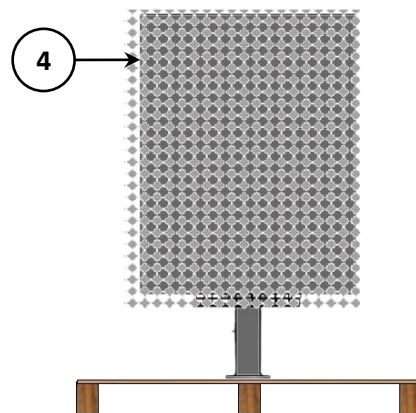
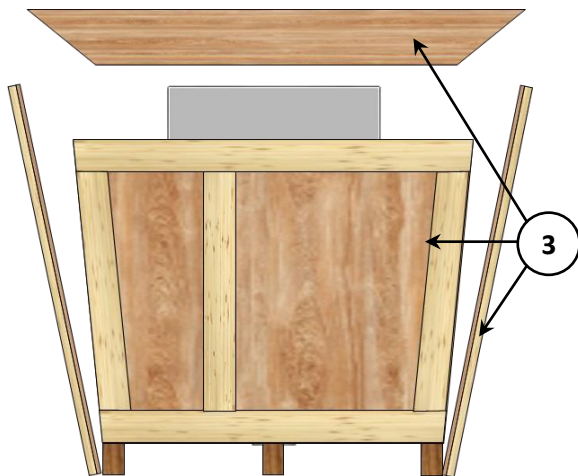
① Use a cutter to cut and remove plastic straps

② Use a hand drill to unscrew all wooden panels



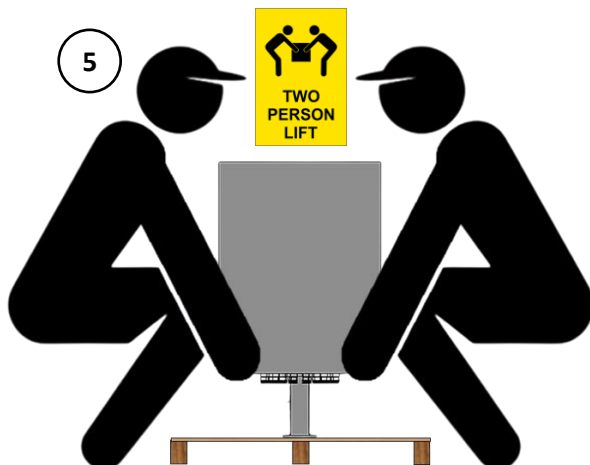
③ Remove top and 4 side panels

④ Remove shrink wrap



⑤ 2 person lift-up from antenna edge

⑥ Use a hydraulic jack for safe transporting



3.00 Safe Handling Caution Label

