

MATSING®

LENS TECHNOLOGY ENABLED

LPA Installation & Alignment General Guide (Light Pole Antenna)

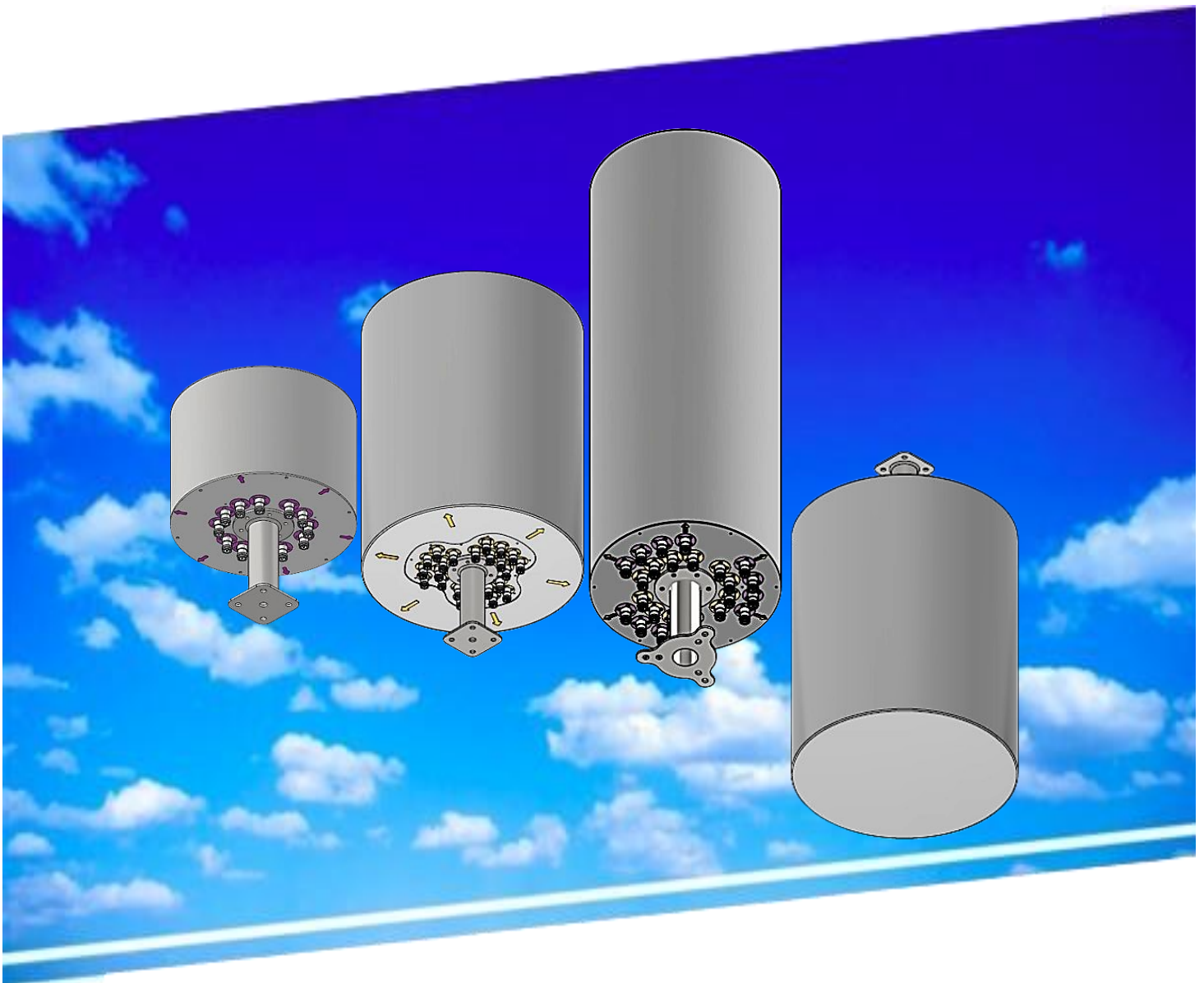


Table of Contents

1.00 Light Pole Antenna (LPA) Overview

1.10 6.6 Series models

1.20 6 Series models

2.00 Antenna Unloading, Transportation, and Unpacking

2.10 General Unloading Guidelines

2.20 Transportation Best Practices

2.30 Antenna Unpacking Procedure

2.31 Prepare the work area

2.32 Wooden crate unpacking

3.00 Antenna Lifting

3.10 Antenna Design and Orientation

3.20 Antenna Orientation During Lifting

3.30 General Handling Precautions

3.40 General Lifting Guidelines

4.00 Antenna Installation

4.10 Mounting Pole and Dimensions

4.11 Cantenna sleeve mounting

4.11 Standard bracket mounting

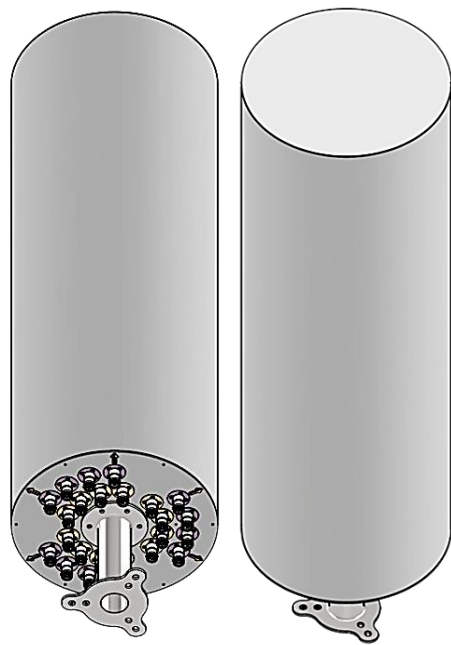
Revision History:

<u>Date</u>	<u>Description</u>	<u>Rev By</u>	<u>Check By</u>	<u>Rev no</u>
11-Apr-2025	Initial Release	RL	Pavel	0

1.00 Light Pole Antenna (LPA) Overview

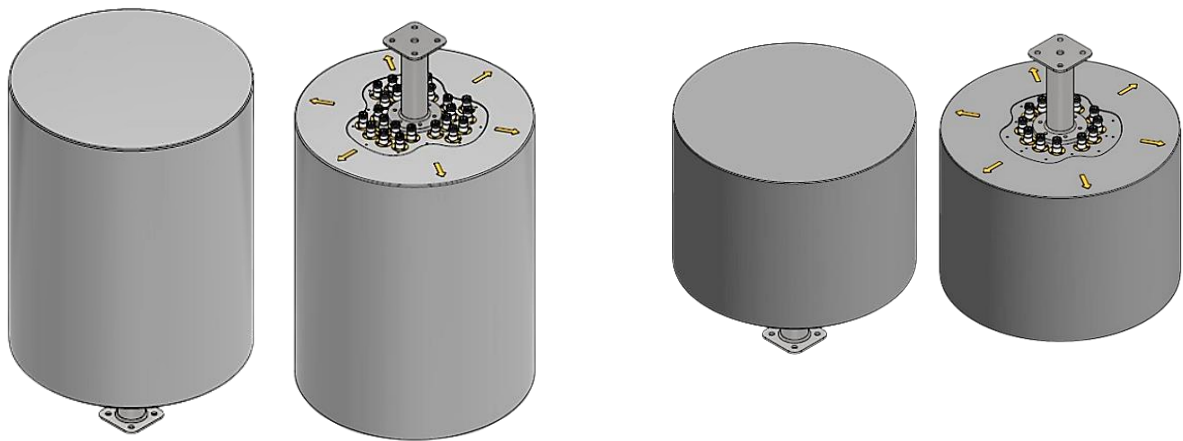
1.10 6.6 Series models

no.	Model	Dimensions (cm)		Weight
		Height	Dia (Ø)	(kg)
1	MS-LPP-6.6-F2-H2-22	132.0	37.1	18.26
2	MS-LPP-6.6-C2-H2-22	132.0	37.1	18.26



1.20 6 Series models

no.	Model	Dimensions (cm)		Weight
		Height	Dia (Ø)	(kg)
1	MS-LP-6-H4-30i	88.8	52.8	20.48
2	MS-LP-6-H4	88.8	52.8	18.54
3	MS-LP-6-H2	59.2	52.8	12.66

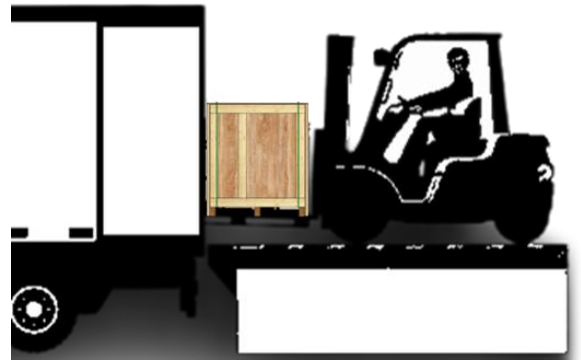


2.00 Antenna Unloading, Transportation, and Unpacking

⚠ **Important Note:** Unloading and transportation must be conducted by **certified logistics personnel** using appropriate lifting and handling equipment. The following guidelines ensure safe and correct handling of the antenna to prevent damage.

2.10 General Unloading Guidelines

- The **antenna must remain in its original packaging** until ready for installation.
- Use only **approved lifting methods** (crane, forklift, hydraulic jack) to handle the antenna.
- **Do not drop, tilt, or drag** the antenna to avoid damage to internal components.
- If using a **forklift**, position the forks **under the designated lifting base** of the crate.



2.20 Transportation Best Practices

- The antenna should be transported in an original packaging position and secured to prevent movement.
- Use **ratchet straps** or other securing methods to prevent shifting during transport.
- Avoid **excessive vibration or impact**, which may affect internal components.



2.30 Antenna Unpacking Procedure

⚠ **Caution:** Ensure unpacking is done on a **stable and level surface** with at least **two people**.

2.31 Prepare the work area

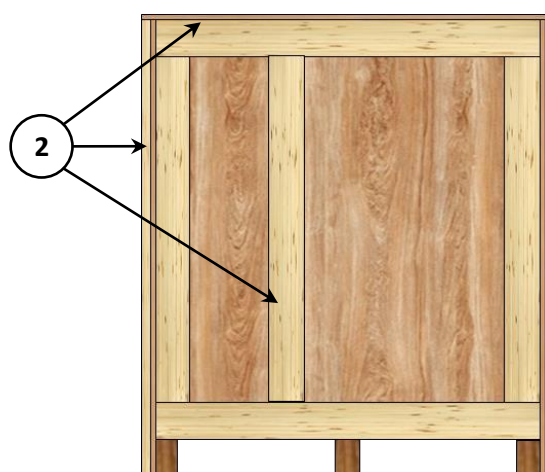
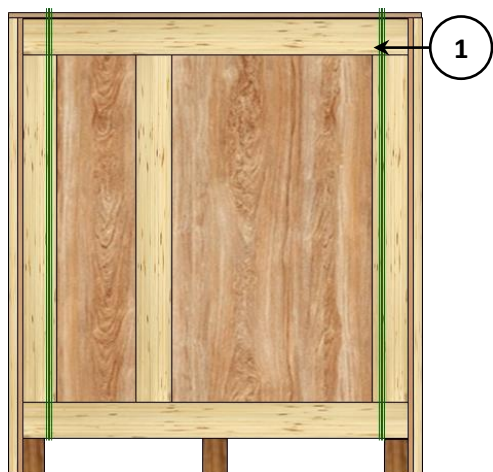
- Clear the area to ensure **enough space** for safe unpacking.
- Wear **appropriate PPE** (gloves, safety boots, and safety glasses).

2.32 Wooden crate unpacking



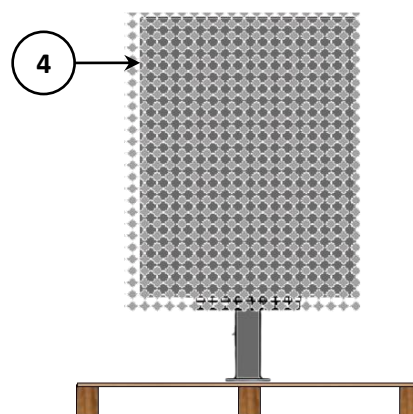
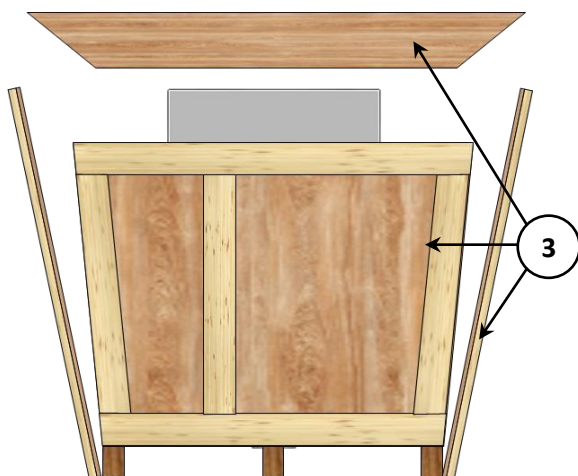
① Use a cutter to cut and remove plastic straps

② Use a hand drill to unscrew all wooden panels



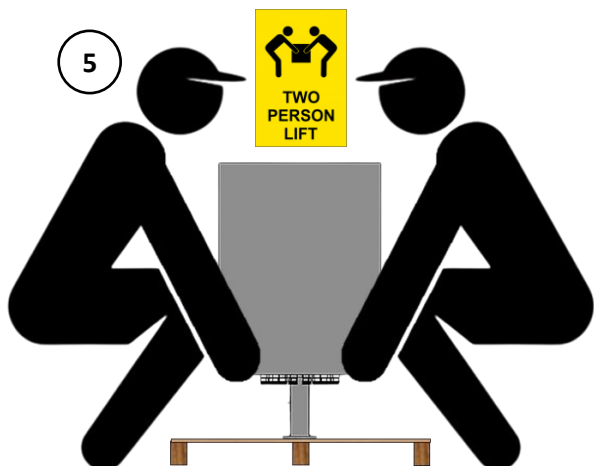
③ Remove top and 4 side panels

④ Remove shrink wrap



⑤ 2 person lift-up from antenna edge

⑥ Use a hydraulic jack for safe transporting



3.00 Antenna Lifting

⚠ **Important Note:** Lifting and installation should be performed by **certified rigging professionals** using appropriate equipment. The following recommendations are provided to ensure correct handling and mounting of the antenna.

⚠ **Critical Handling Caution:** Before lifting and installing the antenna, follow these important precautions to prevent damage and ensure a safe installation:

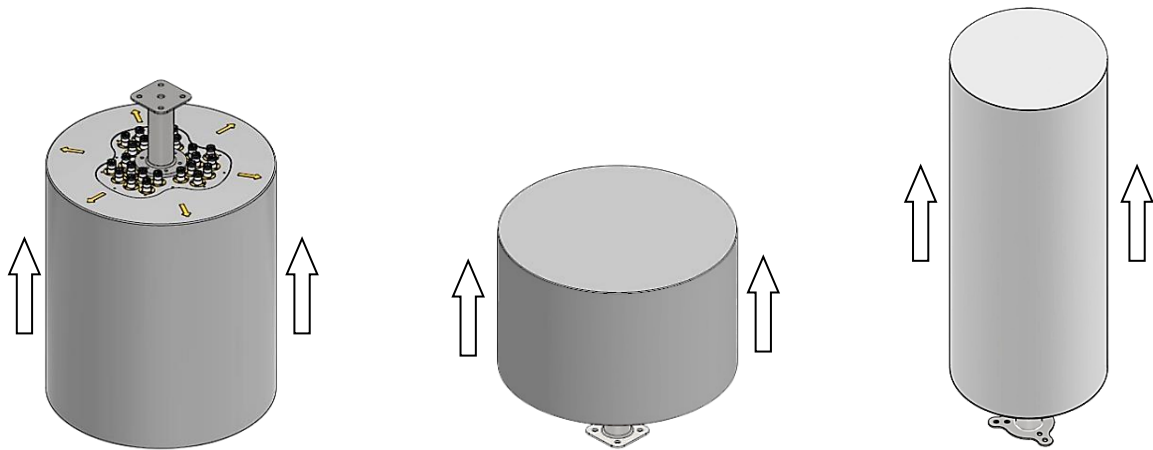
- **Always hold** antenna top and bottom edge or pole together.
- **Do not grip** the antenna body from the radome.

3.10 Antenna Design and Orientation

- **Inverter Type:** Installation with the connector at the top.
- **Normal Type:** Installation with the connector at the bottom.

3.20 Antenna Orientation During Lifting

- Lift the antenna as per **original design** orientation.
- When lifting, only use **certified lifting gear** for hosting the antenna.



3.30 General Handling Precautions

- Only use **certified lifting equipment** suitable for the antenna weight.
- Always follow **local workplace safety regulations** for hoisting and mounting.
- Ensure the mounting structure is **capable of supporting the antenna's load and wind forces**

3.40 General Lifting Guidelines

- **Tag lines** should be used to control movement and prevent accidental impact.
- **Avoid sudden movements** to prevent misalignment or damage.

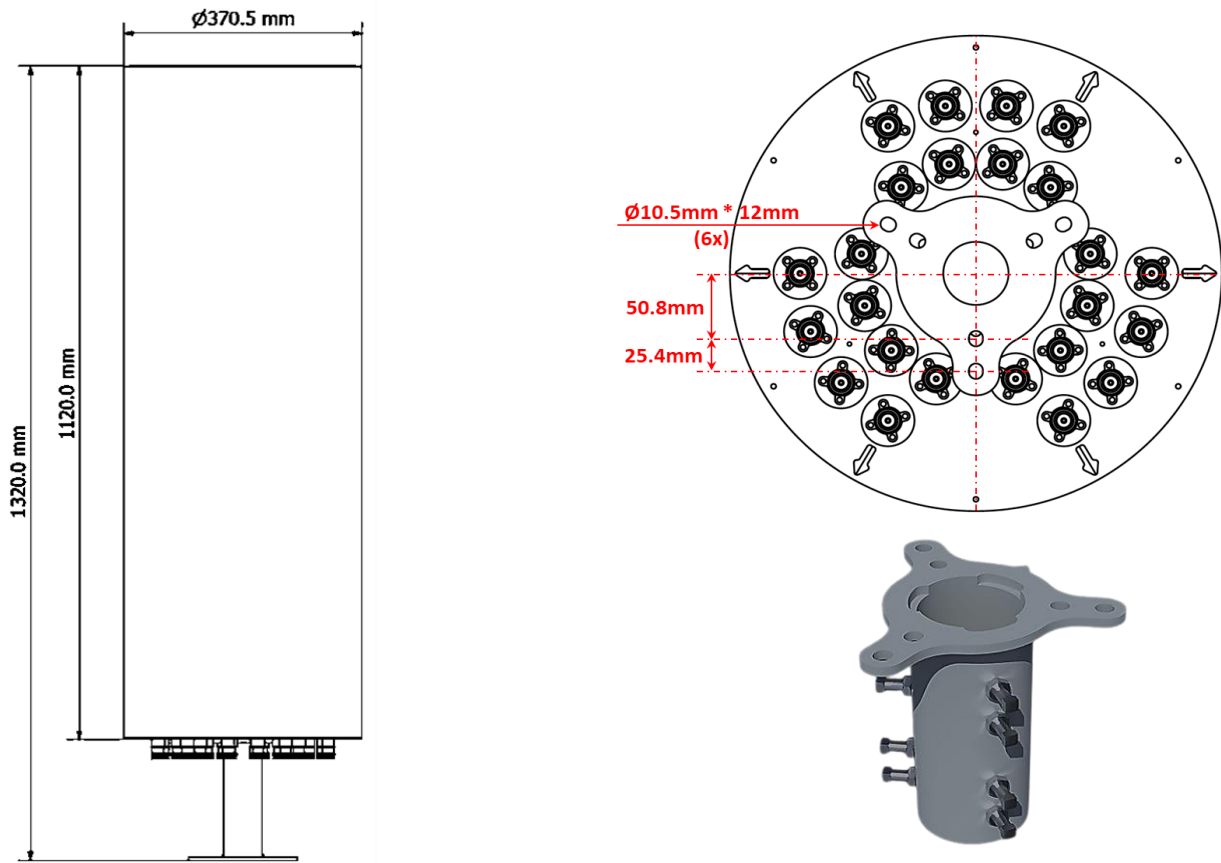


4.00 Antenna Installation

4.10 Mounting Pole and Dimensions

4.11 Cantenna sleeve mounting

- MS-LPP-6.6-F2-H2-22 / MS-MBC-6.6-C2-H2-22



4.11 Standard bracket mounting

- MS-LP-6-H4-30i / MS-LP-6-H4 / MS-LP-6-H2

