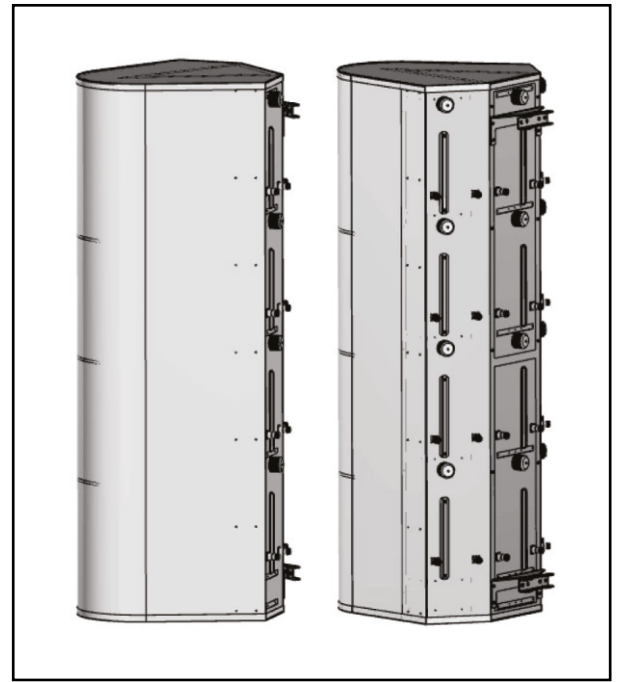


MS-MBA-8

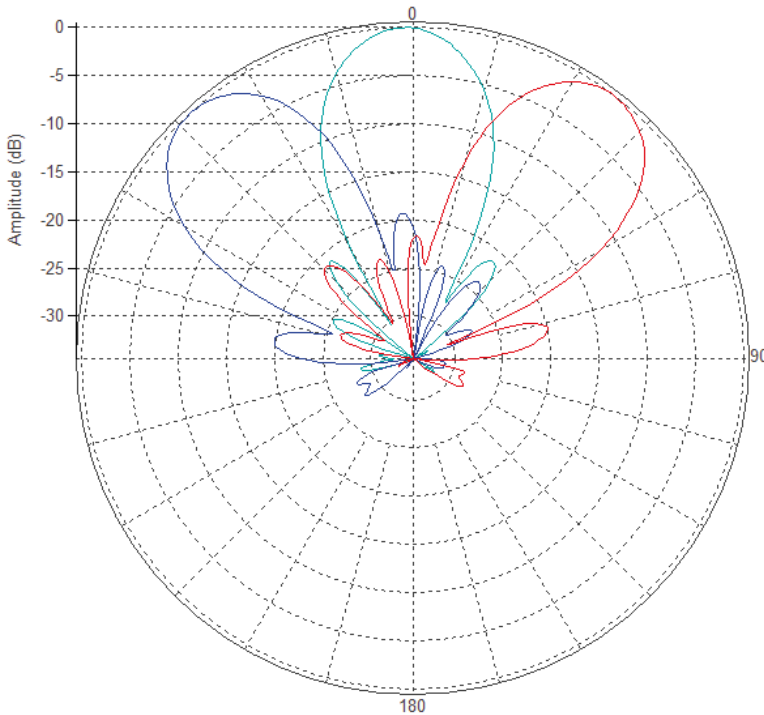
Lens Technology Enabled™ Multi-Beam Base-Station Antenna perfect for 3 to 9 sector LTE cell site deployments for best CINR results. Utilizes a patented spherical lens design with 3 isolated high-frequency (1710 – 2690 MHz) cross-polarized beams. Each beam is made of four independent antennas and has 8 ports. There are four independent tilt settings per beam (0-30° tilt for each pair of cross-polarized elements).



PATTERN RESULTS:



High-Band Horizontal Pattern (1.80GHz)



Vertical pattern at 0° tilt and 30° tilt (1.80GHz)

