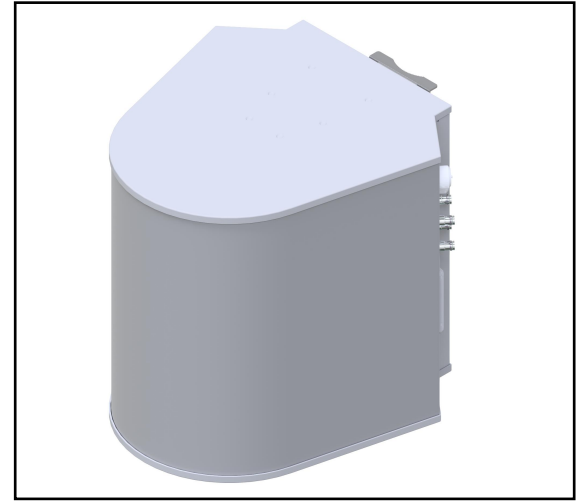


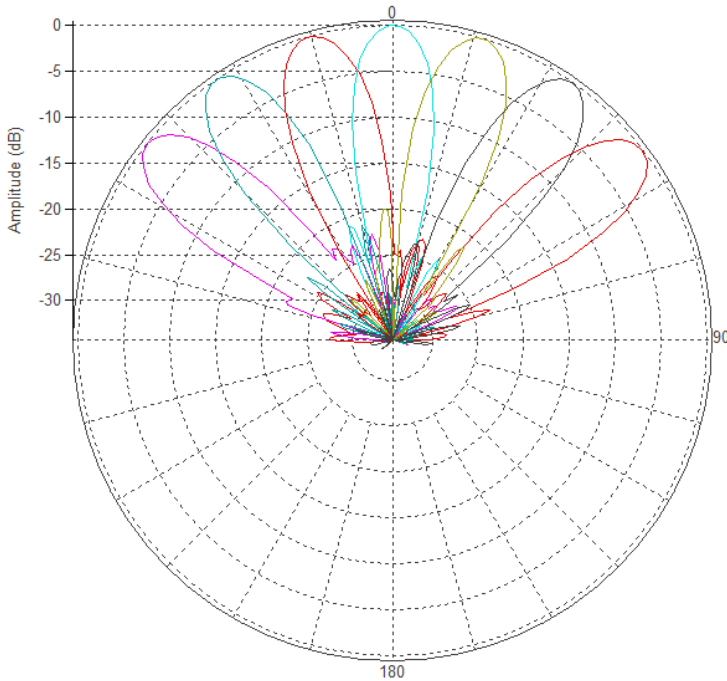
MS-MBA-7-C2

Lens Technology Enabled™ Multi-Beam Base-Station Antenna perfect for seven sector LTE cell site deployments, utilizes a patented spherical lens design with 7 isolated C-Band (3700 - 4200MHz) cross-polarized beams. Each beam has 2 ports, or 2X2 MIMO & 0°-15° RET capability.

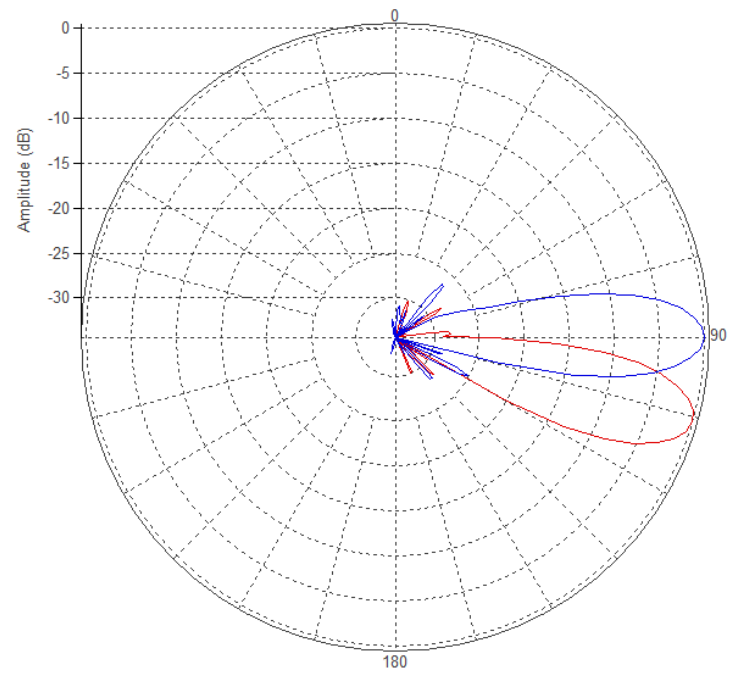


PATTERN RESULTS(3.7GHz):

Horizontal Pattern



Vertical Pattern (0° & 15°)



TECHNICAL SPECIFICATIONS

Frequency	3.7 – 4.2MHz
Gain	22.5dBi
VSWR	<1.5:1
Polarization	Dual Slant ±45°
Horizontal Coverage	120°
Horizontal Beamwidth (10dB level)	21°
Horizontal Beamwidth (3dB level)	12°
Vertical Beamwidth (3dB level)	12°
Beam Cross-over	6-8 dB typical
Total Number of Beams	7
Number of Ports per Beam	2
Total Number of Ports	14
Tilt per Cross-Pol	0° to 15°
First Sidelobe level	<-18dB
Front to Back Ratio	<-30dB
Isolation Port to Port - Polarization	<-28dB
Isolation Port to Port - Beam	<-28dB
Power Rating	150W per port
Intermodulation	150dBc
Impedance	50 ohm
Connector Quantity and Type	14 x 4.3-10 female

MECHANICAL DATA

Dimensions (H x W x D)	63 x 62 x 72 cm 24.8 x 24.3 x 28.5 inch
Antenna Weight	32 kg 71 lbs
Radome Material	Fiber Glass
Mounting	Standard pipe mount Compatible pipe diameter: 6.1 – 11.4 cm 2.4 – 4.5 inch

ENVIRONMENTAL RATINGS

Humidity	95% RH @ +30°C
Temperature	-40°C to +70°C
Wind load @ 150km/hr	N/lbf Frontal: 253/56.9 Lateral: 347/78 Rear: 443/99.6

CONNECTOR LAYOUT:

